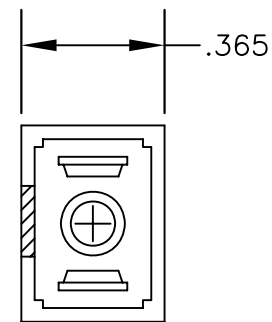
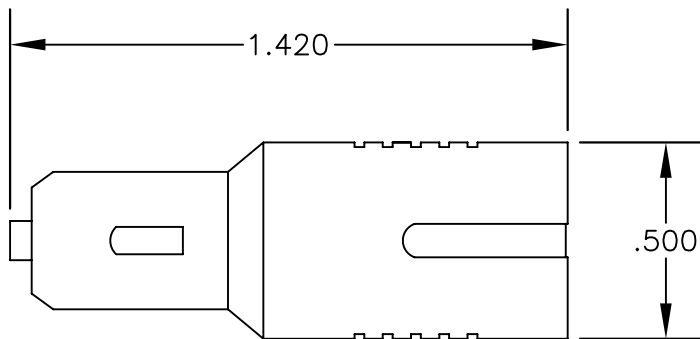


**MATERIALS**

<b>FERRULE</b>	<b>CERAMIC</b>
<b>SLEEVE</b>	<b>CERAMIC</b>
<b>HOUSING</b>	<b>METAL &amp; PLASTIC</b>



**SPECIFICATIONS**

Single Mode  
 PC Polish  
 Attenuation Value: 20dB ±10% Typical, ±15% Maximum  
 Operating Wavelength: 1300/1550 nm  
 Insertion Loss: <0.3dB Typical, 1dB Maximum  
 Return Loss: 40 dB Minimum, >50dB Typical  
 Operating Temperature: -40°C to +75°C



**PASTERNACK ENTERPRISES, INC.**  
 P.O BOX 16759, IRVINE, CA 92623  
 PHONE (949) 261-1920 FAX (949) 261-7451  
 WEB ADDRESS: [www.pasternack.com](http://www.pasternack.com)  
 E-MAIL ADDRESS: [sales@pasternack.com](mailto:sales@pasternack.com)  
**COAXIAL & FIBER OPTICS**

<b>DWG TITLE</b>		<b>DES.</b> SC ATTENUATOR, SINGLE MODE				
<b>PE700002-20</b>						
<b>REV. B</b>	<b>FSCM NO. 53919</b>	<b>CAD FILE</b> 050809	<b>SCALE</b> N/A	<b>SIZE</b> A	<b>147</b>	

**NOTES:**  
 1. UNLESS OTHERWISE SPECIFIED ALL DIMENSIONS ARE NOMINAL.  
 2. ALL SPECIFICATIONS ARE SUBJECT TO CHANGE WITHOUT NOTICE AT ANY TIME.  
 3. DIMENSIONS ARE IN INCHES.