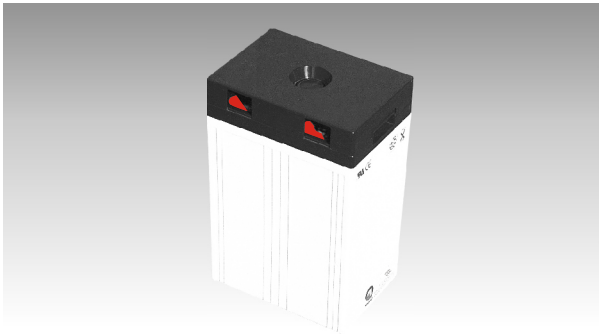
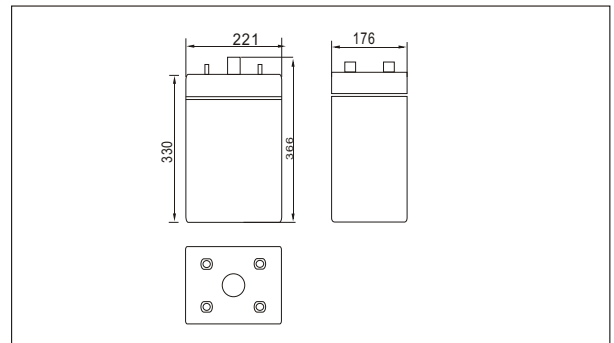




SW24000E(2V400AH)



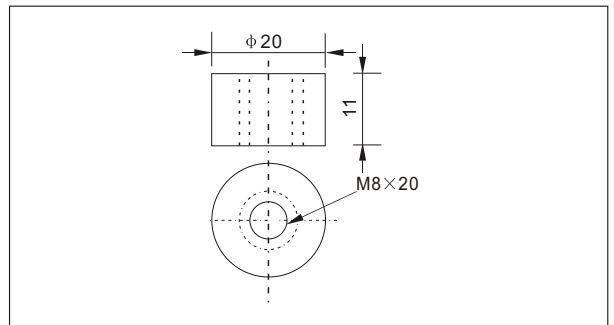
Outer dimensions (mm)



Specifications

Nominal Voltage		2 V
Rated capacity (10 hour rate)		400 Ah
Dimensions	Total Height	366 mm (14.4 inches)
	Height	330 mm (13.0 inches)
	Length	211 mm (8.31 inches)
	Width	176 mm (6.9 inches)
Weight Approx		26.8 Kg (59.0 lbs)

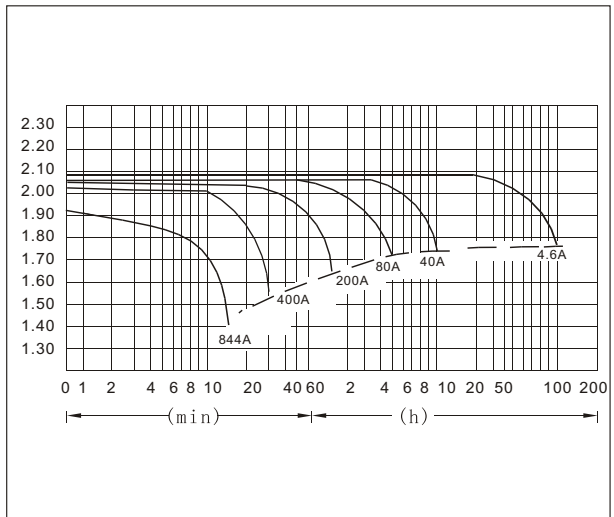
Terminal Type (mm)



Characteristics

Capacity 25°C(77°F)	10 hour rate(40 A)	400 AH
	5 hour rate(64 A)	320 AH
	1 hour rate(220 A)	220 AH
	1.5 hour discharge to 1.75 V	160 A
Internal Resistance	Full charged Battery at 25 °C(77 °F)	1.4 m Ω
Capacity affected by Temperature (10hour rate)	40 °C(104 °F)	102%
	25 °C(77 °F)	100%
	0 °C(32 °F)	85%
	-15 °C(5 °F)	65%
Self-Discharge at 25°C(77°F)	Capacity after 3 month storage	91%
	Capacity after 6 month storage	82%
	Capacity after 12 month storage	64%
Terminal	T20	
Charge (constant Voltage)	Cycle	Initial Charging Current less than 100 A Voltage 2.35-2.40V
	Float	Voltage 2.25-2.30V

Discharge Curves 25°C(77°F)



Constant Current(Amp) and Constant Power(Watt) Discharge Table at 25°C(77°F)

Time		10min	30min	1h	3h	4h	5h	8h	10h	20h	50h	100h
1.60V	A	844	456	240	102.8	80.0	66.0	46.5	42.0	22.68	9.4	4.8
	W	1562	814	463	198	154	127	90	81	43.8	18.7	9.6
1.70V	A	820	444	225.6	100.0	78.0	64.8	45.5	41.0	22.12	9.1	4.7
	W	1502	807	435	193	151	125	88	79	42.7	18.1	9.3
1.75V	A	784	422	218	97.6	76.8	64.0	45.2	40.0	21.84	9.0	4.6
	W	1456	761	422	188	148	124	87	78	42.2	17.8	9.1
1.80V	A	732	408	211	95.2	75.6	62.4	44.0	39.0	21.60	8.8	4.6
	W	1399	733	403	185	145	121	85	78	41.9	17.5	9.1
1.85V	A	672	376	199	92.0	73.3	60.8	42.8	38.00	20.52	8.6	4.4
	W	1375	727	392	182	144	121	85	75	40.7	17.1	8.7