



TAI-SAW TECHNOLOGY CO., LTD.

No. 3, Industrial 2nd Rd., Ping-Chen Industrial District,
Taoyuan, 324, Taiwan, R.O.C.

TEL: 886-3-4690038 FAX: 886-3-4697532

E-mail: tstsales@mail.taisaw.com Web: www.taisaw.com

Product Specifications Approval Sheet

Product Name: SAW Filter 350MHz 30MHz BW SMD 5.0×5.0mm

TST Parts No.:TB0619A

Customer Parts No.: _____

Company: _____
Division: _____
Approved by : _____
Date: _____

Checked by: _____ Andy Yu 

Approval by: _____ Bob Chau 

Date: _____ 2013/03/19

1. Customer signed back is required before TST can proceed with sample build and receive orders.
2. Orders received without customer signed back will be regarded as agreement on the specifications.
3. Any specifications changes must be approved upon by both parties and a new revision of specifications shall be released to reflect the changes.



TAI-SAW TECHNOLOGY CO., LTD.

No. 3, Industrial 2nd Rd., Ping-Chen Industrial District,
Taoyuan, 324, Taiwan, R.O.C.

TEL: 886-3-4690038 FAX: 886-3-4697532

E-mail: tstsales@mail.taisaw.com Web: www.taisaw.com

SAW Filter 350 MHz 30MHz BW SMD 5.0x5.0mm

MODEL NO.: TB0619A

Rev. NO. 1.0

A. MAXIMUM RATING:

1. Operating Temperature: -25°C to +70°C
2. Storage Temperature: -40°C to +85°C
3. Maximum Input Power : 10dBm

RoHS Compliant
Lead free
Lead-free soldering

Electrostatic Sensitive Device (ESD)

B. ELECTRICAL CHARACTERISTICS:

1. Ambient Temperature: 25 °

Item		Min.	Typical	Max.	
Center frequency	Fc	MHz	-	350	-
Insertion loss at Fc		dB	-	14.5	18
Bandwidth at -1.0dB		MHz	30.0	30.2	-
Bandwidth at -6.0dB		MHz	-	36.6	38.0
Bandwidth at -25.0dB		MhZ		42.7	45
Amplitude Ripple (Fc ± 15 MHz)		dB	-	1.3	1.5
Group Delay Ripple (Fc ± 15 MHz)		nS	-	46	100
Absolute Group delay at Fc		nS	-	283	-
Temp Coefficient		ppm/°C	-	-18	-

C. FREQUENCY CHARACTERISTICS :

1.S21 Response

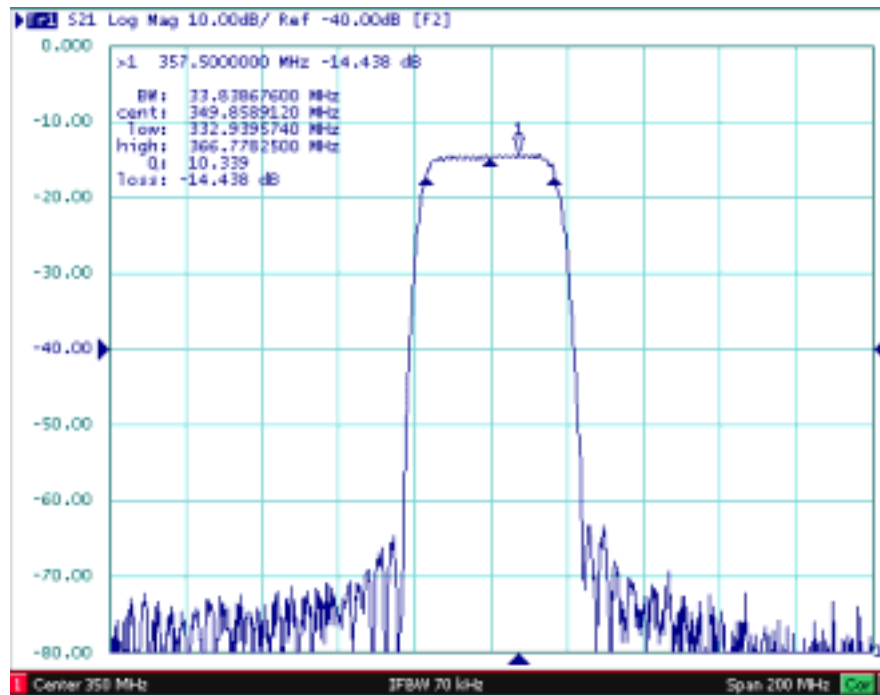


Fig1. Horizontal: 20MHz/Div Vertical: 10dB/Div

2. Passband Ripple

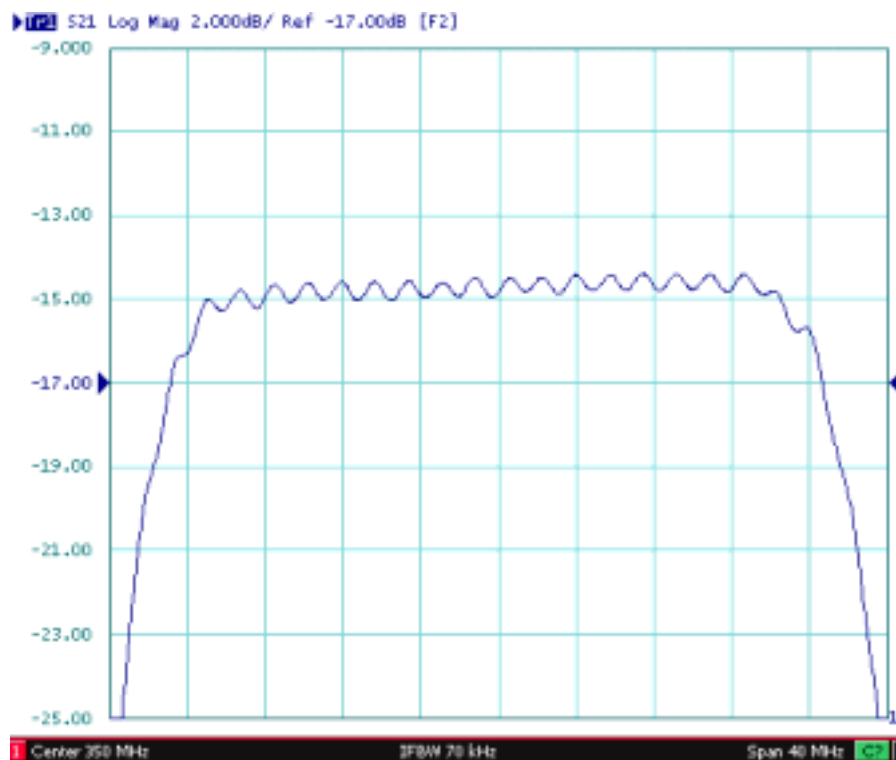


Fig2. Horizontal: 4MHz/Div Vertical: 2dB/Div

3. Group Delay Ripple

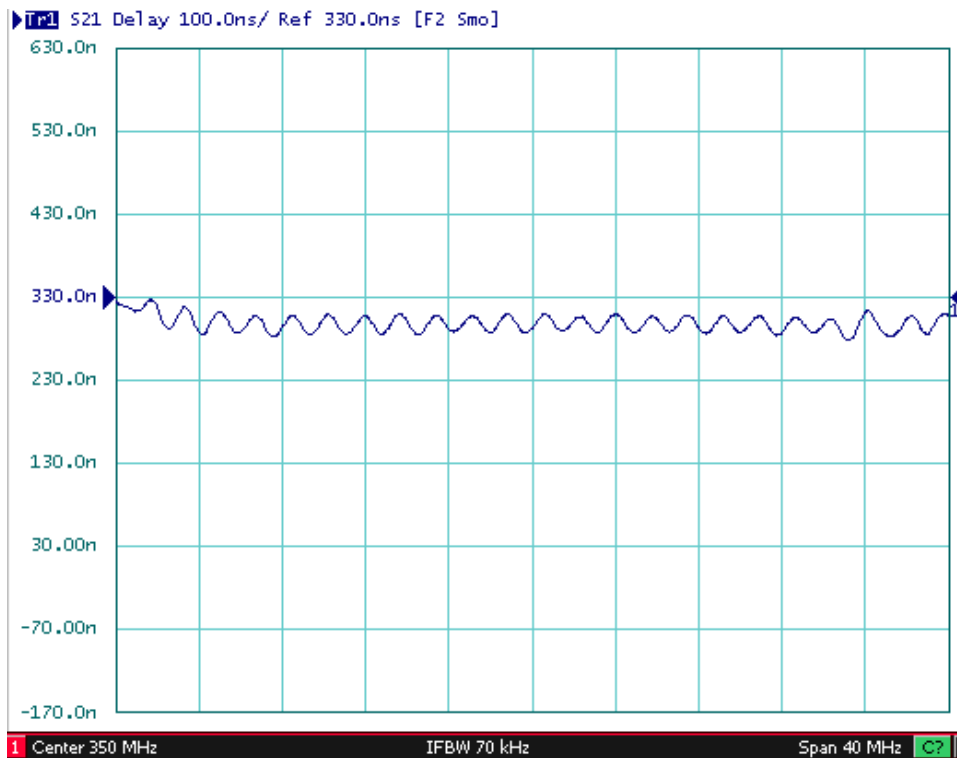
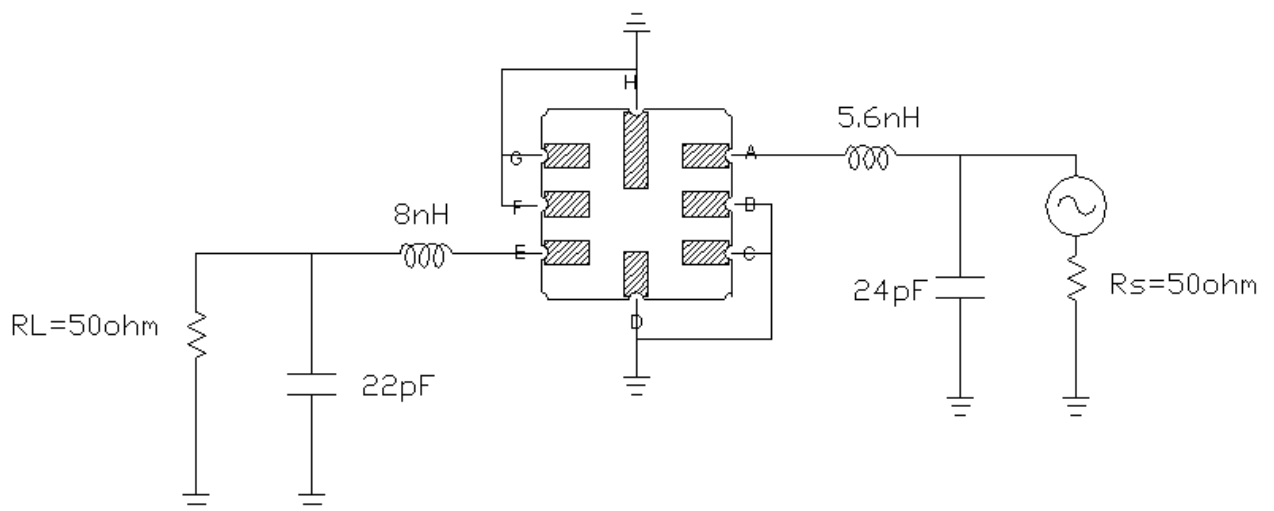


Fig3. Horizontal: 4MHz/Div Vertical: 100nS/Div

D. MEASUREMENT CIRCUIT

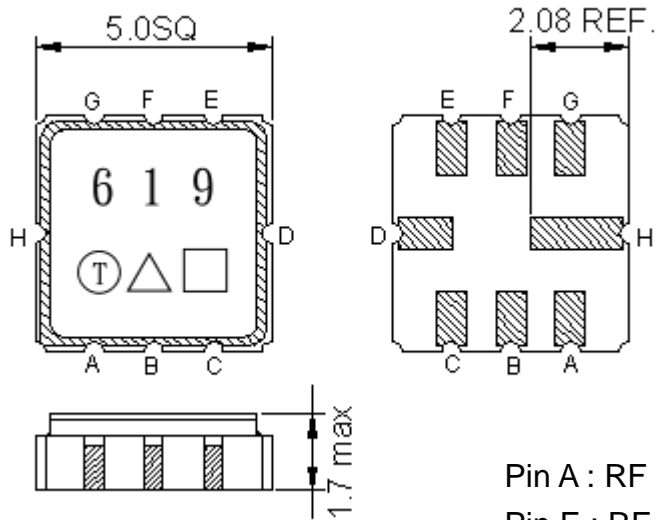
1. Single ended input 50 ohm to Single ended Output 50 ohm

:



Note: The matching structure will change according to different test fixture.

E.OUTLINE DRAWING:

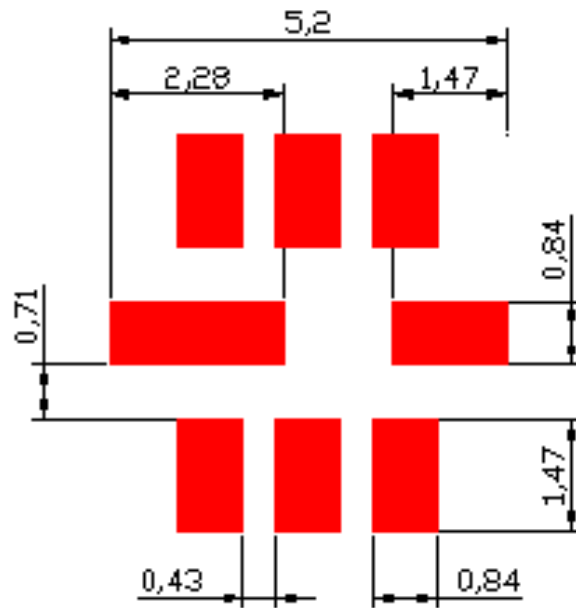


Pin A : RF Input
 Pin E : RF Output
 Pin B,C,D,F,G,H : Ground
 Unit: mm

 : Week Code (Follow the table
 from planner each year)
 : Product / Year Code

Year	2009 2013	2010 2014	2011 2015	2012 2016
Product Code	B	b	<u>B</u>	<u>b</u>

F. PCB Footprint

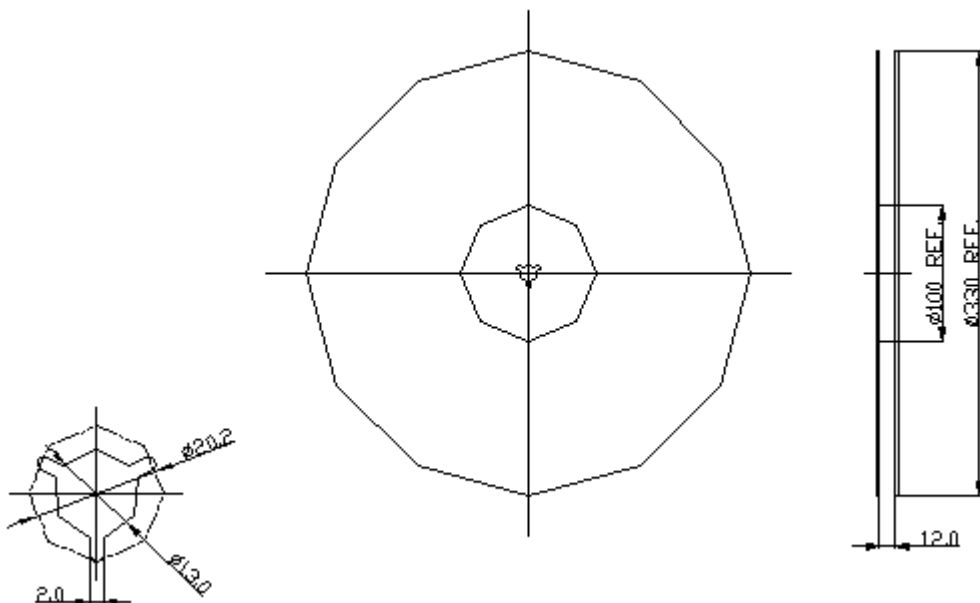


Unit: mm

G. PACKING:

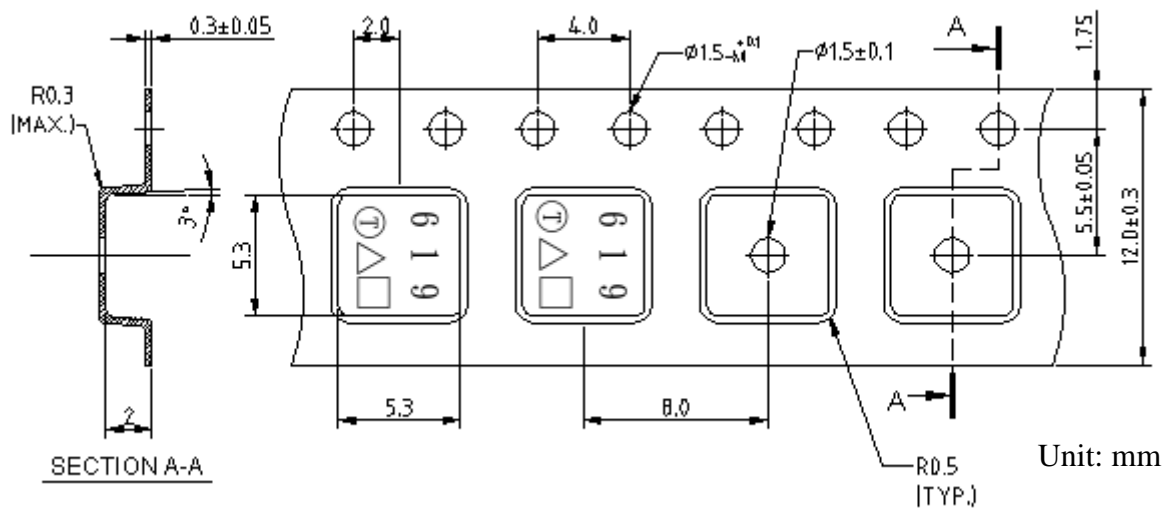
1. REEL DIMENSION

(Please refer to FR-75D10 for packing quantity)



Unit: mm

2. TAPE DIMENSION



H. RECOMMENDED REFLOW PROFILE :

