

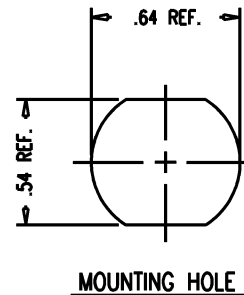
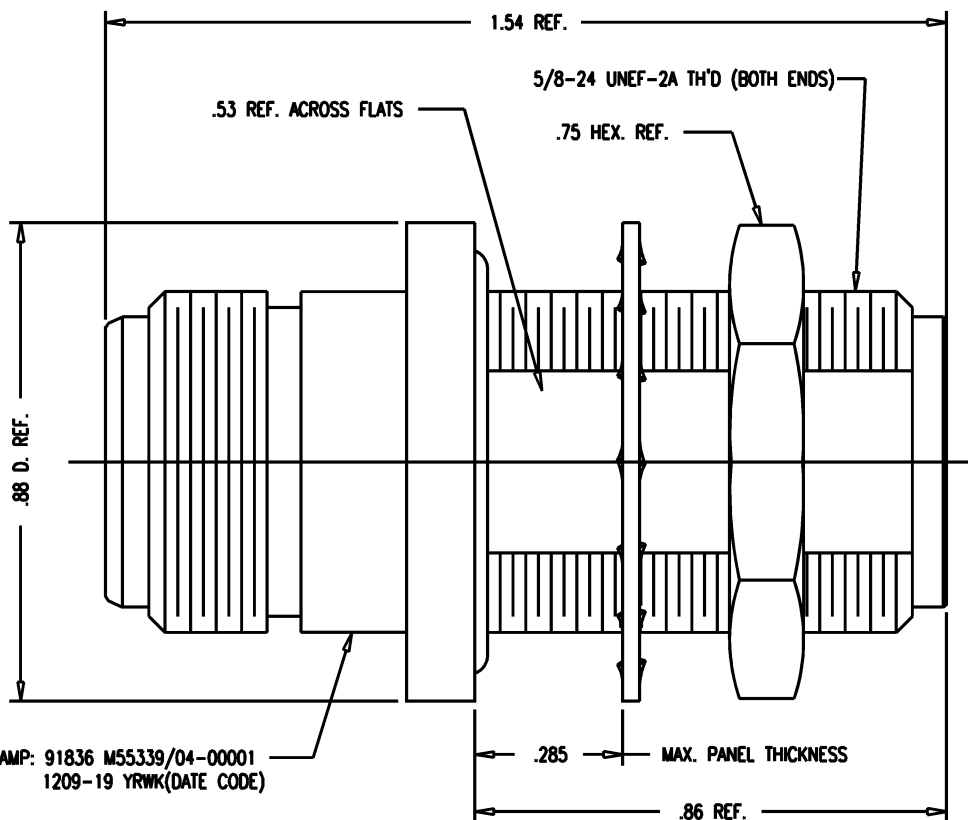
DASH NO.	M CODE	MADE FROM
----------	--------	-----------

# GSD

M55339/04-00001

### REVISIONS

ISSUE	CHANGES
4	CN 32393 A KH 07/31/90
5	CN 35618 D KH 01/09/95
6	CN 37573 C JW 03/17/98



STAMP: 91836 M55339/04-00001  
1209-19 YRWR(DATE CODE)

**NOTES:**

- INTERFACES PER MIL-STD-348, FIG. 3042.
- MATERIALS:  
INSULATORS-TEFLON, ASTM-D-1457  
O-RINGS-SILICONE RUBBER, ZZ-R-765  
LOCKWASHER-PHOSPHOR BRONZE, QQ-B-750  
CENTER CONTACT-BER. COP., ASTM-B-196  
ALL OTHER METAL PARTS-BRASS, QQ-B-626
- FINISHES:  
CENTER CONTACTS-GOLD PLATE PER MIL-G-45204  
ALL OTHER METAL PARTS-SILVER PLATE PER QQ-S-365
- ELECTRIAL CHARACTERISTICS:  
NOMINAL IMPEDANCE-50 OHMS  
FREQUENCY RANGE-DC TO 11 GHz  
WORKING VOLTAGE-1000 VRMS

120919S

SCALE 4:1

APPROX SURFACE AREA

1209-19

USED ON

REF:

**N BULKHEAD ADAPTER  
PRESSURIZED (F-F)**

DRAWN	KH	DATE	07/31/90
-------	----	------	----------

DESIGN	AT	DATE	08/01/90
--------	----	------	----------

APPR.		DATE	
-------	--	------	--

**KINGS**  
ELECTRONICS CO., INC.  
TUCKAHOE, NEW YORK 10707

M55339/04-00001

# GSD