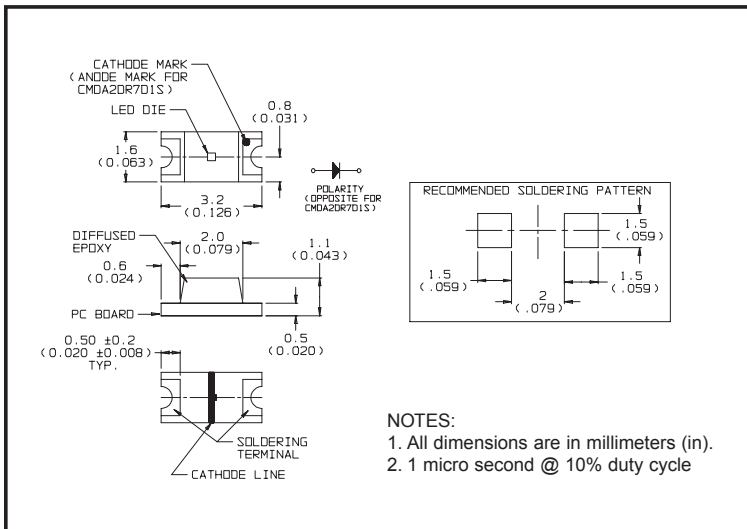


## CMDA2 Series 1206 Package Size Surface Mount LED

### Description and Features



#### Features

- Small size
- Industry standard 1206 Footprint
- Diffused optics
- Top emitting
- Compatible with IR solder profiles
- Ideal for use with Light Pipes
- Available in 8 mm tape on 7" diameter reel
- Packaged 3,000 pieces per reel

#### Applications

- LCD backlighting
- Push button backlighting
- Front panel indicator
- Symbol indicator
- Microdisplays
- Small message panel signage

**CAUTION:** CMDA2CB and CMDA2AG are Class 1 ESD sensitive per MIL-STD-1686. Please observe appropriate precautions during handling and processing.

## Electro-Optical Characteristics and Ratings

Part Number	Output Color	Diffusion	Package Color	Test Current (mA)	Forward Voltage Typ. (V)	Forward Voltage Max. Typ. (V)	Luminous Intensity Min. (mcd)	Luminous Intensity Typ. (mcd)	Peak Wavelength (nm)	Viewing Angle (Degrees)
CMDA2DR7D1S	Red	Diffused	White	20	1.8	2.6	6.3	17	660	170
CMDA2CY7D1S	Yellow	Diffused	White	20	2.1	2.6	2.5	8	589	170
CMDA2AY7D1S	Green	Diffused	White	20	2.2	2.6	4.0	15	570	170
CMDA2BR7D1S	HE Red	Diffused	White	20	2.1	2.6	2.5	10	630	170
CMDA2AA7D1S	Orange	Diffused	White	20	2.2	2.6	2.5	8	605	170

## Absolute Maximum Ratings to = 25°C

Part Number	Power Dissipation (mW)	Operating Temperature (°C)	Storage Temperature (°C)	Peak Forward Current Max. (See note 2) (mA)	Reverse Voltage (IR = 100 mA) (V)	Lead Solder Time at 230°C (Seconds)
DR	78	-30 to +85	-40 to +85	100	5	10
CY	65	-30 to +85	-40 to +85	100	5	10
AY	65	-30 to +85	-40 to +85	100	5	10
BR	65	-30 to +85	-40 to +85	100	5	10
AA	68	-30 to +85	-40 to +85	100	5	10

The model numbers listed above are standard off the shelf parts. For the user who may have a requirement calling for various color/electrical specifications, a part number can be determined by calling the factory.