

■ FC2187

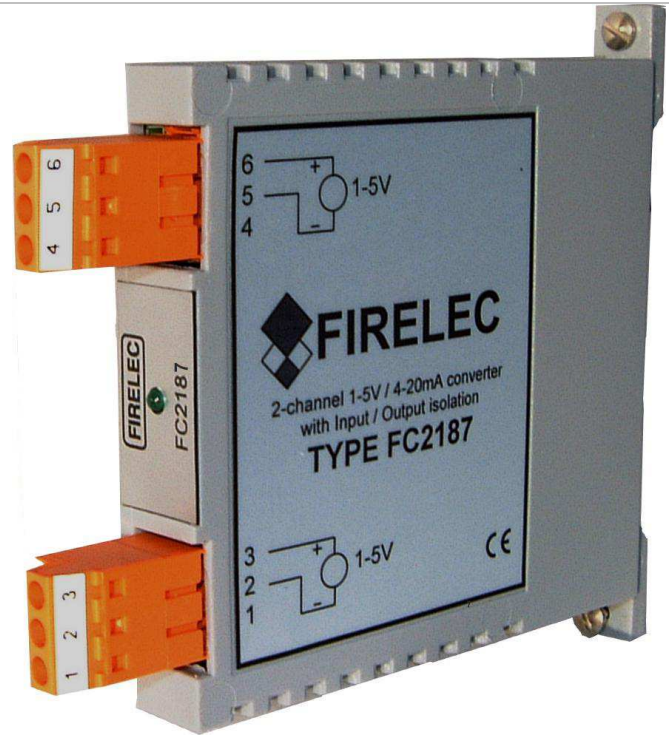
2 channels – converter module 1-5Vdc to 4-20mA

Description:

The module FC2187 is used as interface between the instruments located in the field area and the control room .
The module FC2187 has two 1-5Vdc input channels. Each input is isolated from the other one and from its output.
For each channel the input signal 1-5Vdc is converted with accuracy after isolation into 4-20mA.

Product options:

Option **ST**:FC2187-ST: signal connected using Screw Terminals
Option **CCT**:FC2187-CCT: signal connected using Cage Clamp or spring Terminals

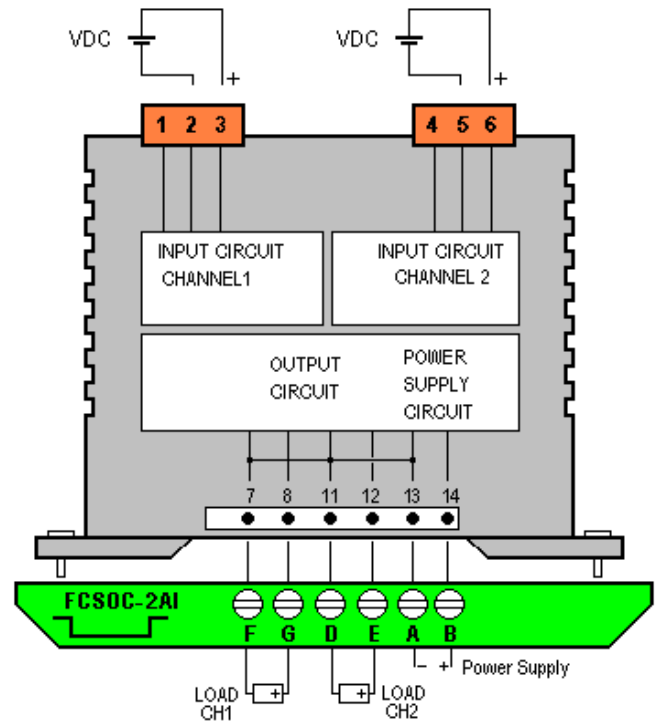


Main characteristics:

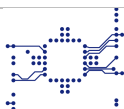
2 input channels 1–5Vdc converted into 4-20mA

Galvanic isolation between each input and between input and output

DIN rail mounting, on termination panel modulo 8 or individual socket



R10-2009



Technical specifications

Power Supply

Voltage range:	20Vdc to 28Vdc
Power ON indication:	By green Led on front plate
Consumption (25Vdc):	125 mA with all channels at 100%
Replaceable fuse:	200 mA 250V quick action

Input specifications for each channel

Protection:	Against over voltage
Input range:	1–5Vdc
Input impedance:	100kΩ

Output specifications for each channel

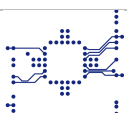
Current:	4-20mA
High limit:	30mA +/- 1mA
Max load:	500 ohms at 20mA output

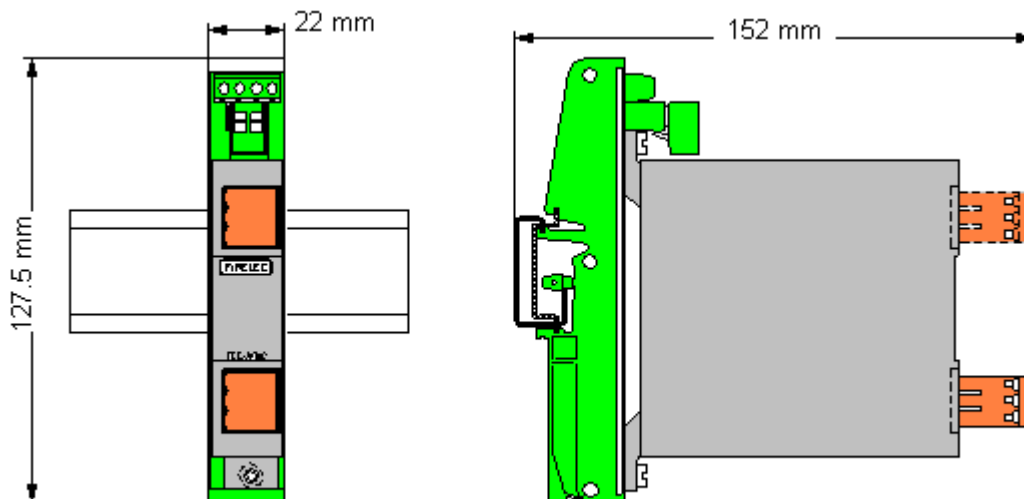
Transfer characteristics for each channel

Accuracy at 20°C ambient:	Better than 0,15%
Response time:	90% of the final value within 50ms.
Drift:	0,01%/°C
Isolation Voltage (Input 1 / Input 2 / output):	1500Vdc
Common mode rejection at 220v:	DC: without measurable effect AC (50Hz): 120 dB

Mechanical and environment characteristics

Protection:	IP20
Wiring conductor section:	Option ST: 24 to 12 AWG (0.2 to 2.5 mm ²) Option CCT: 24 to 12 AWG (0.2 to 2.5 mm ²)
Weight:	100g
Size:	H=85mm W=16mm D=120mm with front connector
Operating temperature:	-10°C to 50°C
Storage temperature:	-20°C to 60°C
Relative humidity:	10 to 90% (no condensation)
Mounting:	Panel modulo 8 type FC8308-1 or FC8308-2 (see documentation FC8308) or individual socket type FCSOC-2AI



Socket for individual mounting on DIN rail

FC2187 installed on FCSOC-2AI socket
Individual socket characteristics

Reference of individual socket:	FCSOC-2AI
Power Supply connection:	Screw Terminal B (+) and A (-) AWG 14 to 26 or 0.14 to 1.5mm ²
Fuse protection on power supply:	1A
Protection:	Against over voltage and reverse polarity
Output channel 1 connection:	Screw terminals G (+) and F (-) AWG 14 to 26 or 0.14 to 1.5mm ²
Output channel 2 connection:	Screw terminals E (+) and D (-) AWG 14 to 26 or 0.14 to 1.5mm ²

