

■ FC2191

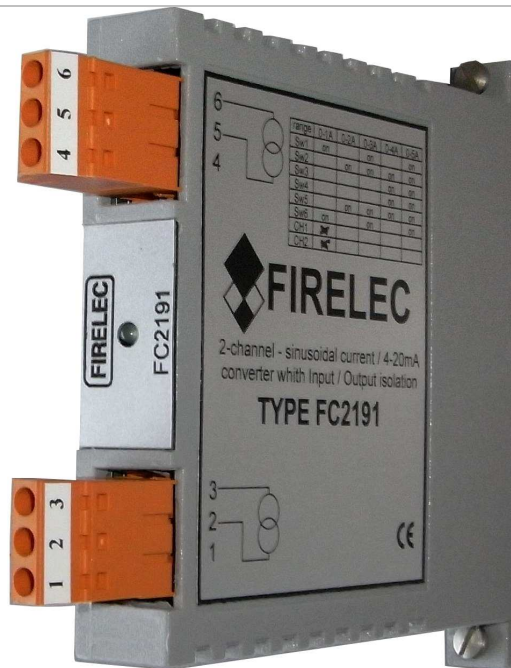
2 channels – Converter module – Sinusoidal current to 4-20mA

Description:

The module FC2191 is used as interface between the instruments located in the field area and the control room .
 The module FC2191 has two sinusoidal current input channels. Each input is isolated from the other one and from its output.
 Each input channel can be configured into five range (0-1A, 0-2A, 0-3A, 0-4A, or 0-5A sinusoidal current) using jumpers.
 Without any customer specification, each input is factory configured with a range of 0-1A (AC).

Product options:

Option **ST**:FC2191-ST: signal connected using Screw Terminals
 Option **CCT**:FC2191-CCT: signal connected using Cage Clamp or spring Terminals



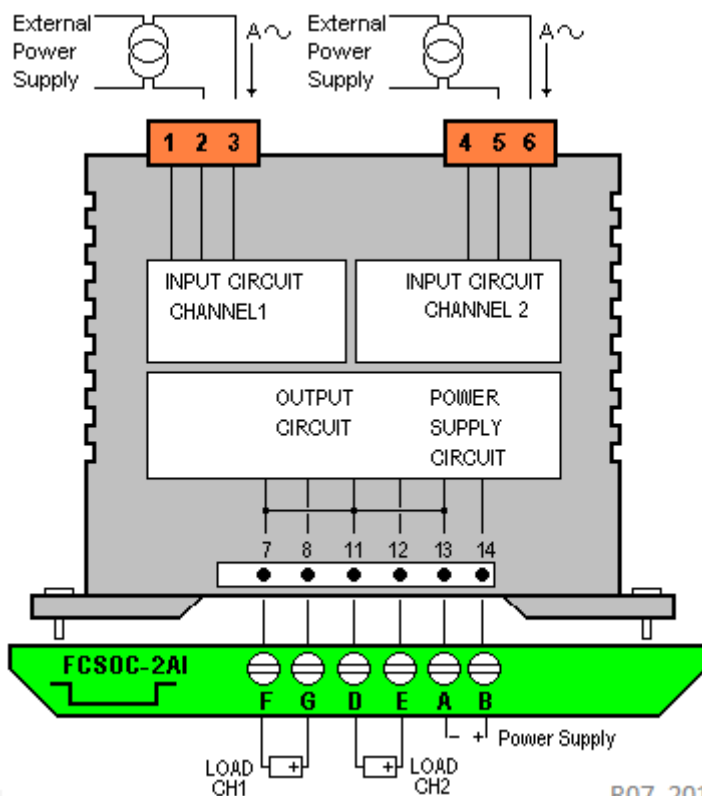
Main characteristics:

2 x admin input channels sinusoidal current converted into 4-20mA

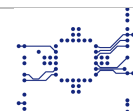
Each channel is configurable into 0-1, 0-2, 0-3, 0-4, 0-5A (AC) using jumper

Galvanic isolation between each input and between input and output

DIN rail mounting, on termination panel modulo 8 or individual socket



R07 2011



Technical specifications

Power Supply

Voltage range:	20Vdc to 28Vdc
Power ON indication:	By green Led on front plate
Consumption (25Vdc):	100 mA with all channels at 100%
Replaceable fuse:	200 mA 250V quick action

Input specifications for each channel

Input impedance:	<1Ω
Signal input type:	Sinusoidal current between 40Hz and 60Hz
Input range:	0-1A, 0-2A, 0-3A, 0-4A or 0-5A

Output specifications for each channel

Current:	4-20mA
High limit:	30mA +/- 1mA
Max load:	500 ohms at 20mA output
Max current with a 250 ohm load	35mA

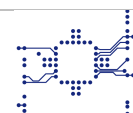
Transfer characteristics for each channel

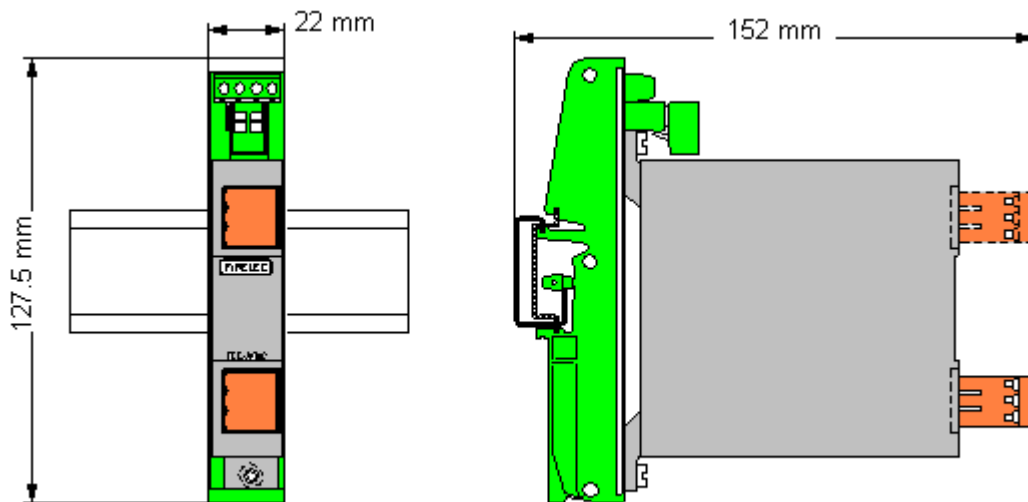
Accuracy at 20°C ambient:	1% : from 5% to 100% of the scale
Linearity:	Better than 1% from 5% to 100% of the scale
Drift:	0,015%/°C
Isolation Voltage (Input 1 / Input 2 / output):	1500Vdc
Common mode rejection at 220v:	DC: without measurable effect AC (50Hz): 120 dB

Mechanical and environment characteristics

Protection:	IP20
Wiring conductor section:	Option ST: 24 to 12 AWG (0.2 to 2.5 mm ²) Option CCT: 24 to 12 AWG (0.2 to 2.5 mm ²)
Weight:	100g
Size:	H=85mm W=16mm D=120mm with front connector
Operating temperature:	-10°C to 50°C
Storage temperature:	-20°C to 60°C
Relative humidity:	10 to 90% (no condensation)
Mounting:	Panel modulo 8 type FC8308-1 or FC8308-2 (see documentation FC8308) or individual socket type FCSOC-2AI

		Input range configuration				
	SW1 ou SW2	0-1A(AC)	0-2A(AC)	0-3A(AC)	0-4A(AC)	0-5A(AC)
1	● OFF ● ON ●	ON	OFF	ON	OFF	ON
2	● OFF ● ON ●	OFF	ON	ON	ON	ON
3	● OFF ● ON ●	OFF	OFF	OFF	ON	ON
4	● OFF ● ON ●	OFF	OFF	OFF	ON	ON
5	● OFF ● ON ●	OFF	ON	ON	ON	ON
6	● OFF ● ON ●	ON	OFF	ON	OFF	ON



Socket for individual mounting on DIN rail

FC2191 installed on FCSOC-2AI socket
Individual socket characteristics

Reference of individual socket:	FCSOC-2AI
Power Supply connection:	Screw Terminal B (+) and A (-) AWG 14 to 26 or 0.14 to 1.5mm ²
Fuse protection on power supply:	1A
Protection:	Against over voltage and reverse polarity
Output channel 1 connection:	Screw terminals G (+) and F (-) AWG 14 to 26 or 0.14 to 1.5mm ²
Output channel 2 connection:	Screw terminals E (+) and D (-) AWG 14 to 26 or 0.14 to 1.5mm ²

