

NOTES:

1. DESIGN: Lens mounts the Litepipe securely to display panel providing 180° viewing angle
2. MOUNTING: Panel mounting hole .250 (6.35mm) on 3/8" centers
3. PANEL THICKNESS: For CLB 300 and SQB 400: 1/32" to 1/4".
For Panels less than 3/16" use SPC 125
4. LENS LOCK: Insert Litepipe into lens aligning the tabs with the lens slot
Standoff used to adjust the height of a standard LED above the PCB and maintain a maximum .050" clearance between the Litepipe and LED.
5. Standoff used to adjust the height of a standard LED above the PCB and maintain a maximum .050" clearance between the Litepipe and LED.
6. Length is from front of panel to LED
7. Custom lengths available upon request (Minimum order quantity may apply)
8. U.S. & Foreign Pat. Issued and Pend.

REVISIONS				
ECN #	REV	DESCRIPTION	DATE	INITIALS
	N/A	INITIAL RELEASE	1/25/96	JS
	001	REVISED PER ECN111009AZ01	4/23/10	KH

D

D

C

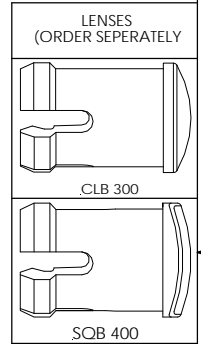
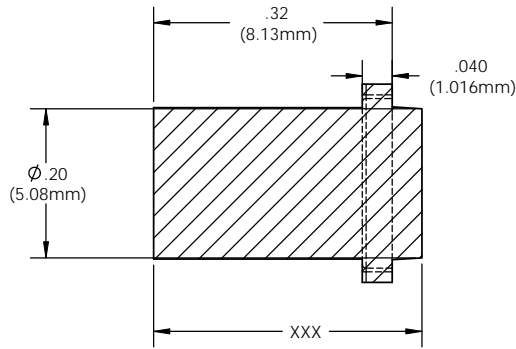
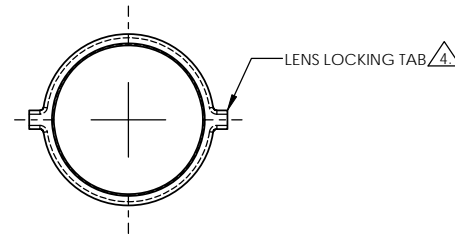
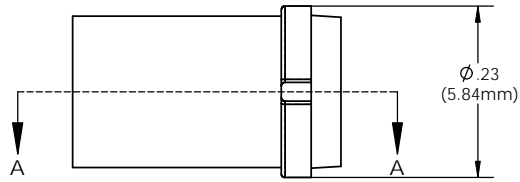
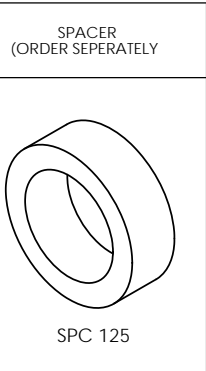
C

B

B

A

A

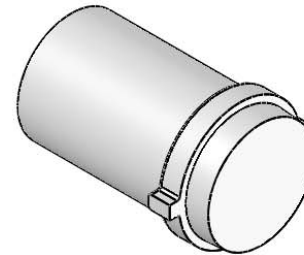
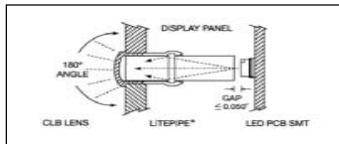


ORDERING CODE:
LCV XXX CTP

LENGTH CODE	
036	= .360"
056	.560"
076	.760"
096	.960"
116	1.160"
136	1.360"

COLOR	
CTP	CLEAR

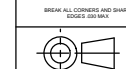
CUSTOM LENGTHS
AVAILABLE UPON
REQUEST
(SEE NOTE7)



UNLESS OTHERWISE SPECIFIED
DIMENSIONS ARE IN INCHES

ANGLES DECIMALS
±1° .X ±.020
XXX ±.010
XXX ±.005

BREAK ALL EDGES AND SHARP
EDGES (R1/16")



PROPRIETARY AND CONFIDENTIAL
THE INFORMATION CONTAINED IN THIS
DRAWING IS THE SOLE PROPERTY OF
VISUAL COMMUNICATIONS COMPANY, INC. AND
REPRODUCTION IN PART OR AS A WHOLE
WITHOUT THE WRITTEN CONSENT OF
VISUAL COMMUNICATIONS COMPANY, INC. IS
PROHIBITED.

MATERIAL
ACRYLIC (OPTICAL GRADE)
U.L. 94-HB

FINISH
SEE NOTES

APPROVAL	DATE
DRAWN K.Howard	4/23/10
CHECKED DPZ	5/4/10

DO NOT SCALE DRAWING

VISUAL COMMUNICATIONS COMPANY, INC.
190 Bossick Boulevard, Suite 101 San Marcos, CA 92069 USA
Phone (760) 560-1300 Fax (760) 560-1301 email vccsales@vccite.com

TITLE:
5MM ROUND LITEPIPE

SIZE	DWG. NO.	REV
B	LCV XXX CTP	001

SCALE: 6:1 SHEET 1 OF 1

8

7

6

5

4

3

2

1