

# SENSITRON

## Single Phase Bridge

**PART NUMBER:SL1505HE**

**PACKAGE STYLE:408**

**CONFIGURATION:Single Phase Bridge**

**DESCRIPTION:50 VOLT, 15 AMP, 40 NANOSECOND Single Phase Bridge RECTIFIER ASSEMBLY**

-All ratings are at  $T_A=25^{\circ}\text{C}$  unless otherwise specified

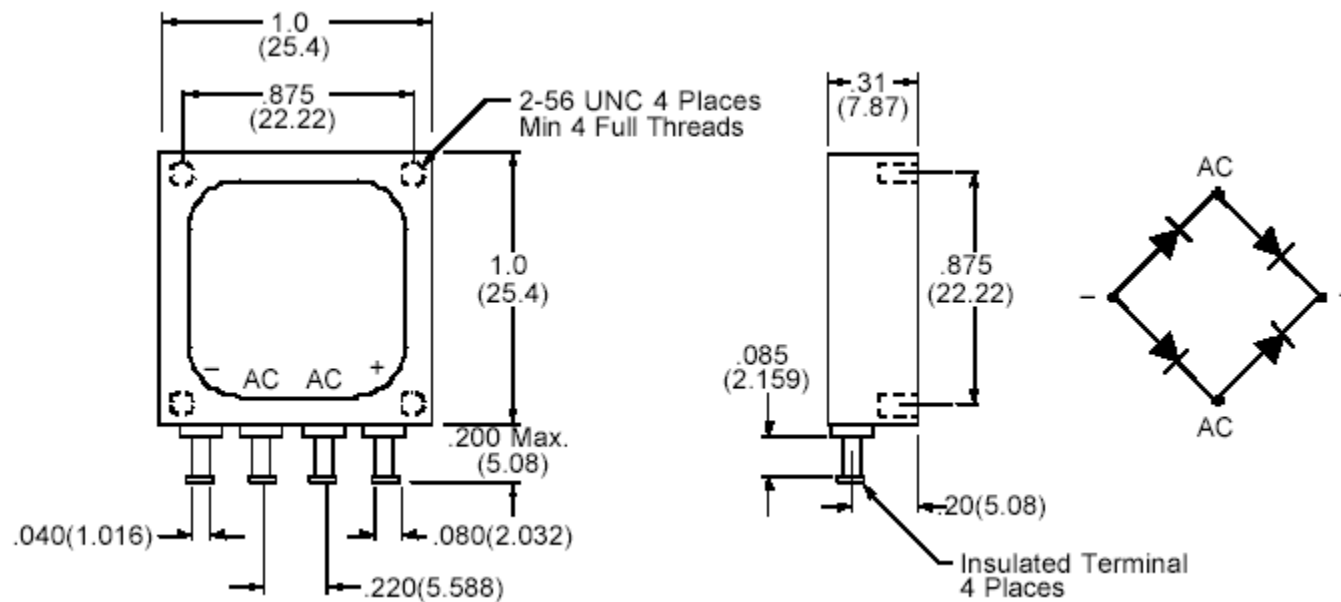
[Disclaimer](#)

MAXIMUM RATINGS / ELECTRICAL CHARACTERISTICS					
RATING	CONDITIONS	MIN	TYP	MAX	UNITS
PEAK INVERSE VOLTAGE (PIV)	-	-	-	50	Vdc
AVERAGE DC OUTPUT CURRENT ( $I_O$ )	$T_C=55^{\circ}\text{C}$	-	-	15	Amps
	$T_C=100^{\circ}\text{C}$	-	-	11	
PEAK SINGLE CYCLE SURGE CURRENT ( $I_{fsm}$ )	$T_p=8.3$ ms Single Half Cycle Sine Wave, Superimposed On Rated Load	-	-	150	Amps (pk)
OPERATING AND STORAGE TEMP. ( $T_{OP}$ & $T_{stg}$ )	-	-55	-	+150	$^{\circ}\text{C}$
MAXIMUM FORWARD VOLTAGE ( $V_f$ )	$I_f=3.0\text{A}$ (300 msec pulse, duty cycle<2%)	-	-	1 @ 6	Volts
MAXIMUM INSTANTANEOUS REVERSE CURRENT AT RATED (PIV)	$T_A=25^{\circ}\text{C}$	-	-	10	mAmps
	$T_A=100^{\circ}\text{C}$	-	-	100	
REVERSE RECOVERY TIME ( $t_{rr}$ )	$I_f=0.5\text{A}$ , $I_r=1.0\text{A}$ , $I_{rr}=0.25\text{A}$	-	-	40	nsec
THERMAL RESISTANCE	-	-	-	2	$^{\circ}\text{C}/\text{W}$

*Data and specifications subject to change without notice.*

[sales@sensitron.com](mailto:sales@sensitron.com)  
 221 West Industry Ct., Deer Park, NY 11729-4681  
 PHONE (631) 586-7600 FAX (631) 242-9798

**MECHANICAL DIMENSIONS: In Inches / mm**



**FIG. 408**

**\*This drawing is for reference only.**