

SPECIFICATIONS

Mechanical

Mating Force: 4.50Kg (9.91Lb) max.

Unmating Force: 0.90~2.70Kg (1.98~5.95Lb)

Durability: 500 Cycles

Electrical

Voltage Rating: 250V

Current Rating: 2A

Contact Resistance: 30mΩ max.

Dielectric Withstanding Voltage: 750V AC/1min min.

Insulation Resistance: 1000MΩ min.

Physical

Housing & Spacer: Thermoplastic, UL 94V-0 rated

Contact & Shell: Copper alloy

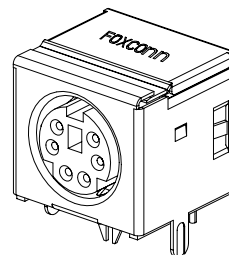
Plating: See "ORDERING INFORMATION"

Operating Temperature: -55℃ to +105℃

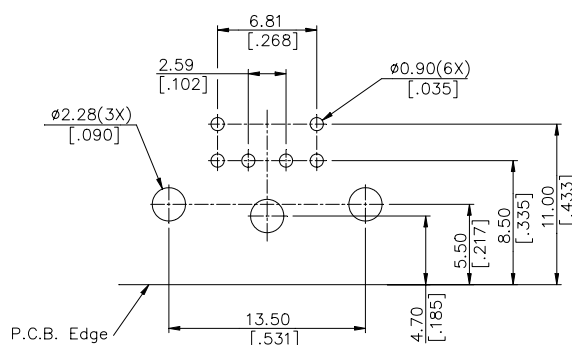
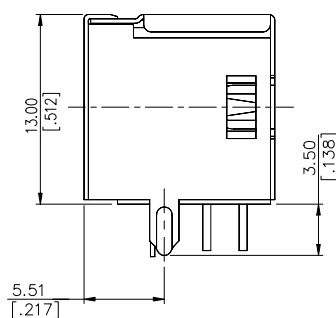
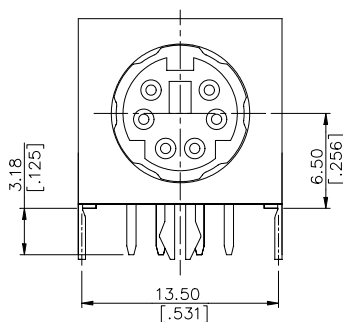
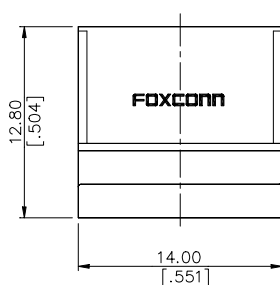
Mini Din Connector

MH Series

Single, R/A, T/H Type
6 Pos.



DRAWING



RECOMMENDED P.C.B. LAYOUT

ORDERING INFORMATION

PRODUCT NO.: MH 1 1 0 6 * - *H1

Mini Din Series

Terminator Type

1=Right Angle Through Hole Type

Contact Design Type

1=Female

Body Type

0=Standard

Modify Code

Contact Area Plating

1=Gold Flash
F=Gold Flash (Lead Free)
3=30u" Gold
H=30u" Gold (Lead Free)
7=15u" Gold
V=15u" Gold (Lead Free)

No. of Pos.

6=6 Pos.

MH1106*-PH2	PURPLE
MH1106*-PH1	GREEN
MH1106*-H1	BLACK
P/N	HOUSING COLOR