

SPECIFICATIONS

Mechanical

Contact Retention Force: 9.8N(1Kgw) min.

Contact Mating Force: 39.2N (4Kgw) max.

Contact Unmating Force With Eject Function: 24.5N max.

Durability: 10000 Cycles

Electrical

Current Rating: 0.5A max.

Insulation Resistance: 1000MW min. (Initial)

Dielectric Withstanding Voltage: 250 V AC RMS

Physical

Housing: LCP, UL 94V-0 rated in Black Color

Contact: Phosphor Bronze

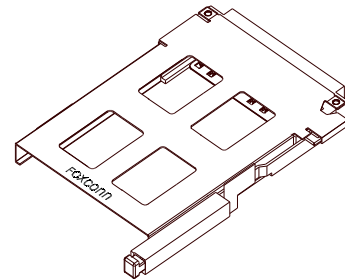
Operating Temperature: -20°C to +85°C

CardBus G2 series

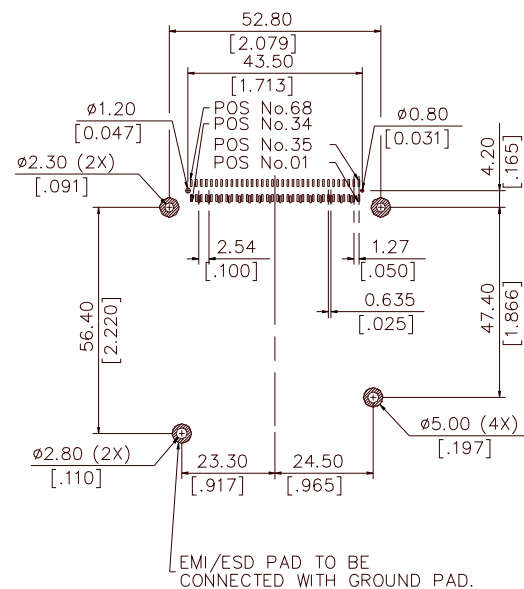
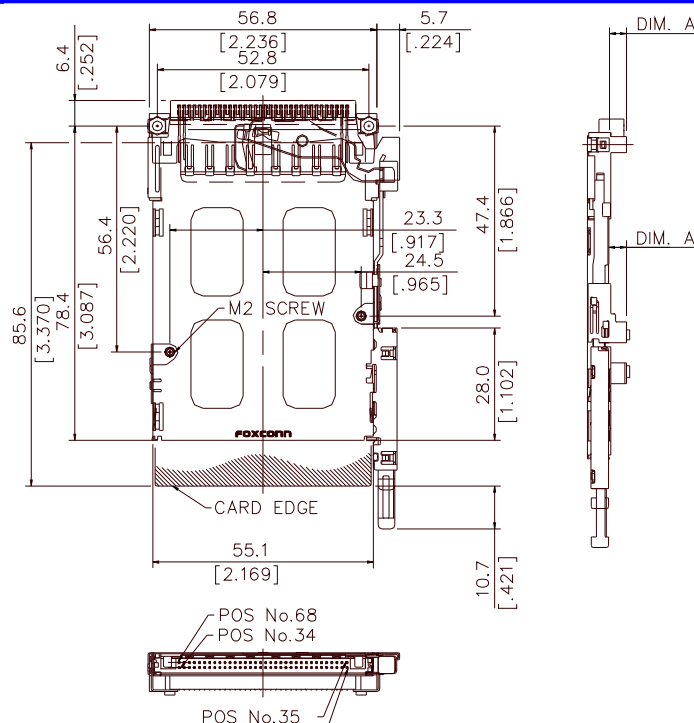
1CA4* Series, 68 Pos.

SMT Type

1.27 mm [0.050"] Pitch



DRAWING



RECOMMENDED P.C.B. LAYOUT

ORDERING INFORMATION

PRODUCT NO. : 1CA435N2-TC2

Product Series	Extension Code
Assembly Product	Ejector Type
Voltage & Tail Type	Stand Off Height
Deck Type	Lever Type
3=Reverse, Single Deck	5=Variable Arm

1CA435N2-TC2	3.90 [.154]
1CA43521-TC2	2.00 [.078]
1CA435A2-TC2	1.50 [.079]
1CA43501-TC2	0.00 [.000]
P/N	DIM. A