

**Providing the high-speed digital testing industry's only vertical PCB launch configuration, Molex's innovative Precision 2.4mm Compression-Mount Test Connectors optimize design flexibility and reduce installation time while achieving 50 GHz analog performance or over 20 Gbps digital signals**

Realize improved testing capability with Molex's Precision 2.4mm Compression-Mount Test Connectors. Designed with a vertical launch configuration and a unique compression-mount design, customers can create test points virtually anywhere on the PCB, enabling unparalleled design flexibility. The Precision 2.4mm Compression-Mount Test Connectors mate to 2.4mm male (plug) connectors, available on the customer's test equipment cable end. The Precision 2.4mm Compression-Mount Test Connectors are an extension of the Precision Optimized SMA Test Connectors (Series 73251).

## Precision Test Connectors 2.4mm Compression-Mount

73387 2.4mm Vertical  
Compression-Mount Test  
Connectors, 50 GHz



*Precision Test Connectors 2.4mm  
Vertical Compression-Mount*

### FEATURES

Vertical PCB launch configuration

Unique compression-mount design using two 0-80 UNF screws

Capable of handling 50 GHz analog signals

2.4mm mating interface

Integrated center pin design

Stainless-steel body

### BENEFITS

Can be located anywhere on the PCB for increased PCB density

Reduces installation time by eliminating soldering from the process. Accommodates a wide range of board thicknesses including 0.57 to 2.79mm; more options available upon request. Provides a continuous ground connection between the connector and PCB

Provides high-bandwidth performance for high-speed (over 20 Gbps digital signals) digital test boards

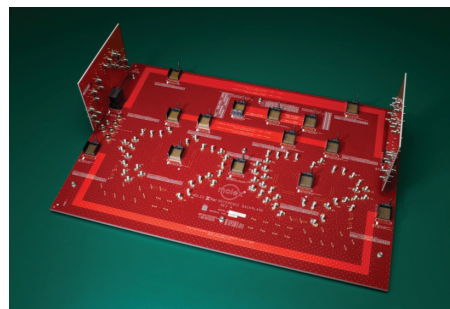
Compatible with network analyzer cables

Capable of 1.2:1 VSWR at 50 GHz. The interface dimensions are optimized after installing on the PCB. Provides low reflections for accurate measurements

Durable housing to withstand over 500 mating cycles

### MARKETS AND APPLICATIONS

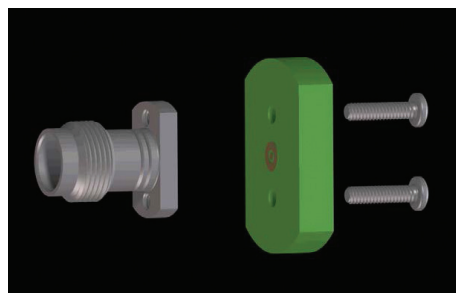
- Datacommunication and Telecommunication Applications
  - Test and Characterization Boards
  - Reference Backplanes
  - High-speed Backplanes
- Test and Measurement Equipment
- Chip Manufacturers



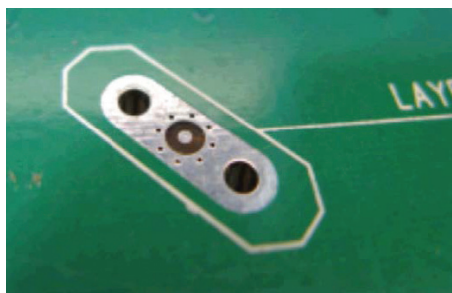
*Reference Backplane*

## ADDITIONAL PRODUCT FEATURES

- Innovative design includes two 0-80 UNF screws for mounting the receptacle to the PCB, eliminating soldering



Mounting method illustration depicting two 0-80 UNF screws for mounting the receptacle to the PCB, eliminating soldering



Actual launch pad on which the connector mounts

## Precision Test Connectors 2.4mm Compression-Mount

73387 2.4mm Vertical  
Compression-Mount Test  
Connectors, 50 GHz

## SPECIFICATIONS

### Reference Information

Packaging: Tray  
Mates With: 2.4mm Male Plug  
(not sold by Molex)  
Designed In: Millimeters  
RoHS: Yes  
Halogen Free: Yes

### Electrical

Contact Resistance:  
Center Contact —  $\leq 3 \text{ m}\Omega$   
Outer Contact —  $\leq 2 \text{ m}\Omega$   
Dielectric Withstanding Voltage:  
500V RMS  
Insulation Resistance: 5,000 Megohms  
Voltage Standing Wave Ratio:  
DC to 26.5 GHz — 1.10 max.  
26.5 to 40 GHz — 1.15 max.  
40 to 50 GHz — 1.20 max.  
RF Leakage:  $\leq -100\text{dB}$   
RF Insertion Loss:  
 $0.03 \times \sqrt{f}$  (GHz) dB max.

### Mechanical

Mating Force: .23N meters max.  
Durability (min.): 500 cycles

### Physical

Housing: Stainless Steel  
Contact: Beryllium Copper  
Plating:  
Center Contact — Gold (Au)  
Under Plating — Nickel (Ni)  
PCB Thickness: 0.57 to 2.79mm =  
standard; more options available upon  
request  
Operating Temperature: 0 to +165 °C

## ORDERING INFORMATION

Mounting Screw Length	Order No.
4.76mm	73387-0020
6.35mm	73387-0021
None	73387-0022