



# PRODUCT SPECIFICATION

REV A January 2011

Oscilent Controlled Document

Ordering Code / Part Number	Product Description
813-SL85.1M-22A	85.10MHz IF SAW Filter 22.00MHz Bandwidth

## Specification Contents

- o Mechanical Dimensions
- o Test Circuit
- o Maximum Ratings
- o Electrical Specification
- o Frequency Response
- o Smith Chart
- o VSWR

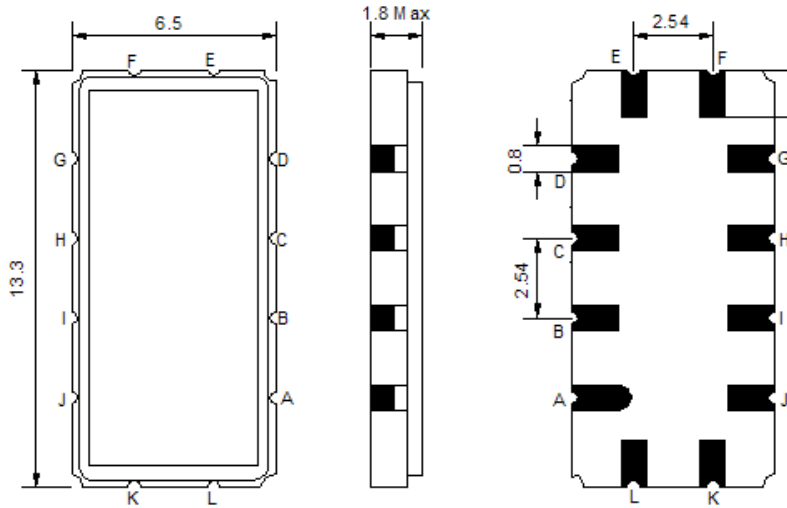
## Notes

- o Electrostatic Sensitive Device (ESD) 
- o Avoid excessive ultrasonic exposure
- o Solderability compatible with JEDEC J-STD-020C Pb-free process, 260°C peak reflow temperature
- o This product complies with EU directive 2002/95/EC (RoHS compliance)



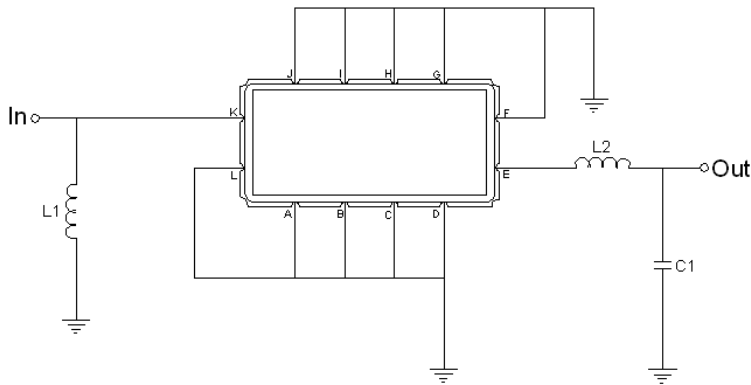


## Mechanical Dimensions (mm)



Pin Description	
A, B, C, D, F, G, H, I, J, L	Ground
K	Input
E	Output

## Test Circuit



Test Fixture & Values	
Input	L1 = 68 nH
Output	L2 = 100 nH, C2 = 36 pF
Source/Load Impedance	50 Ω

**Maximum Ratings**

Parameters Description	Unit	Minimum	Typical	Maximum
Operating Temperature Range	°C	-30	-	80
Storage Temperature Range	°C	-40	-	85
Maximum DC Voltage	V	-	-	10
Maximum Input Power	dBm	-	-	10
Source Impedance (single ended) <sup>(1)</sup>	Ω	-	50	-
Load Impedance (single ended) <sup>(1)</sup>	Ω	-	50	-

Notes: With Matching Network (Ref. Testing Environment Circuit as shown above).

Those impedances could be modified with different impedance values and/or structures, if necessary.

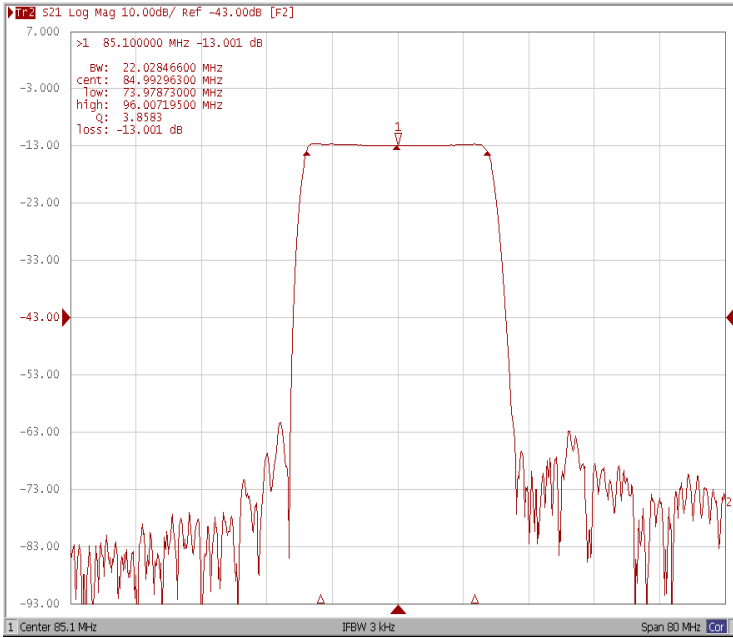
**Electrical Specification**

Parameters Description	Unit	Minimum	Typical	Maximum
Center Frequency (Fo)	MHz	-	85.1	-
Insertion Loss at Fo	dB	-	13.0	15.0
Group Delay Variation (Fo±9.42MHz)	ns	-	18	35
Absolute Delay Time at Fo	us	-	0.95	-
Amplitude Ripple (Fo±9.42MHz)	dB	-	0.35	0.90
Bandwidth at -1dB	MHz	21.70	22.00	-
Bandwidth at -10dB	MHz	-	24.15	-
Bandwidth at -20dB	MHz	-	25.25	25.60
Bandwidth at -40dB	MHz	-	26.70	-
Ultimate Rejection	dB	40	47	-
Temperature Coefficient	ppm/°C	-	-86	-

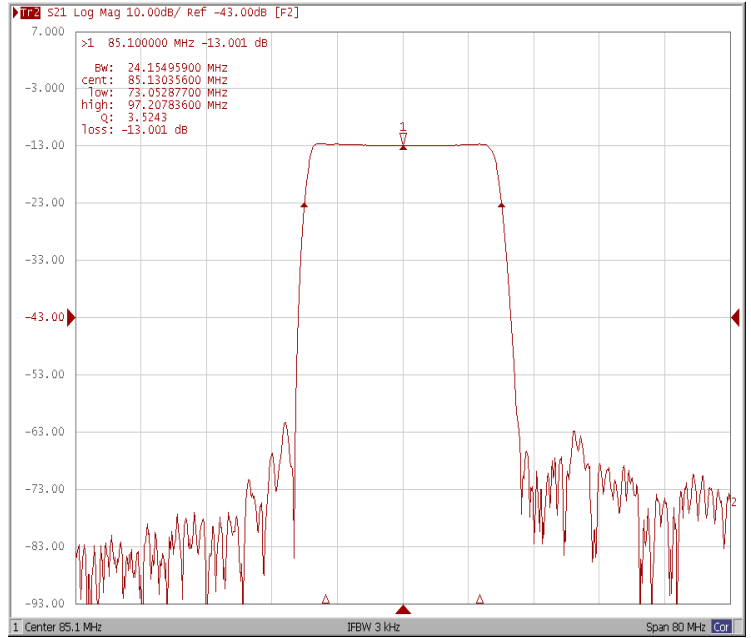


## Frequency Response

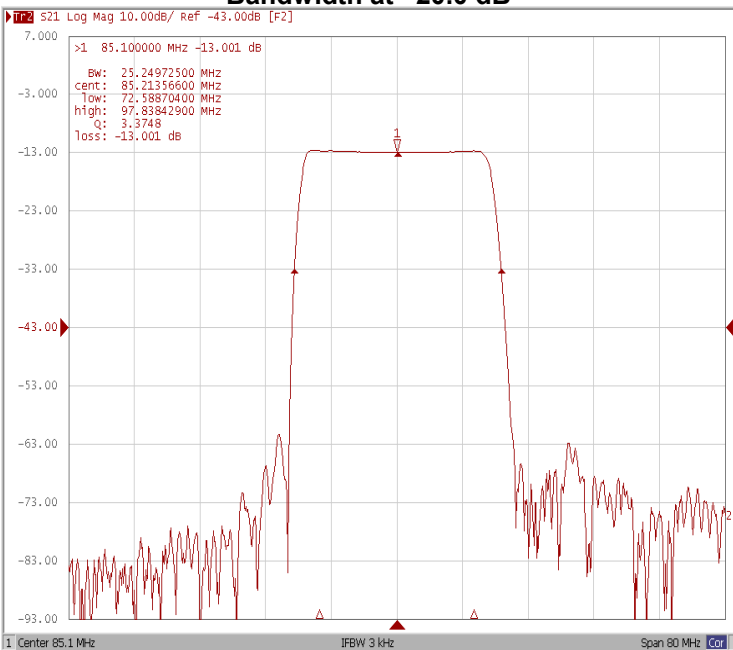
### Bandwidth at -1.0 dB



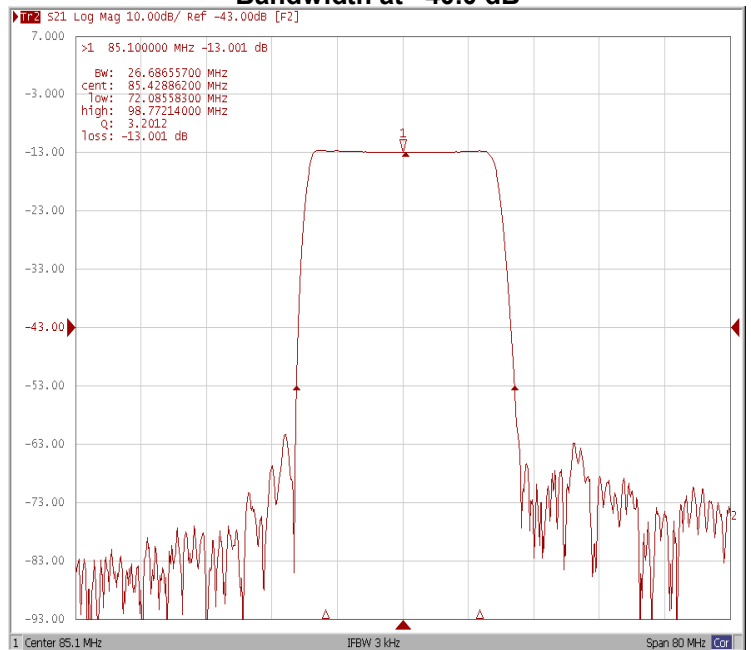
### Bandwidth at -10.0 dB



### Bandwidth at -20.0 dB

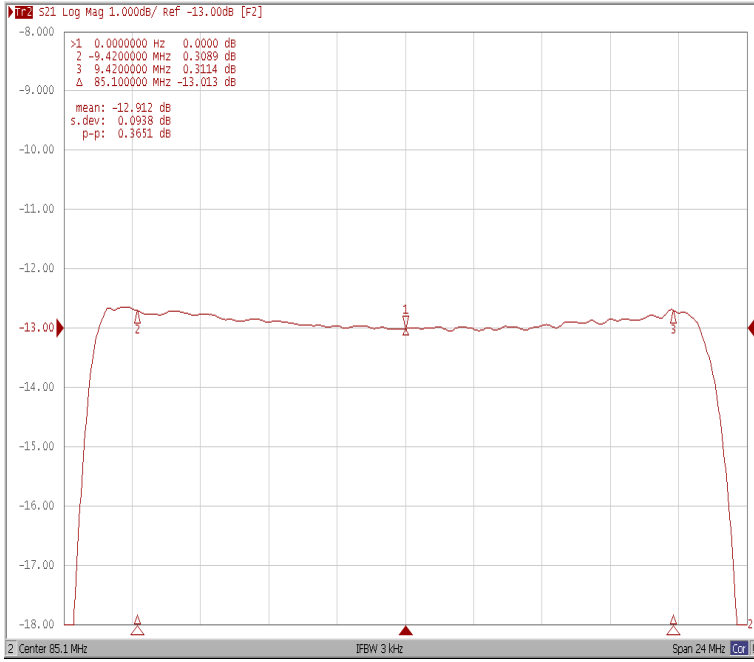


### Bandwidth at -40.0 dB

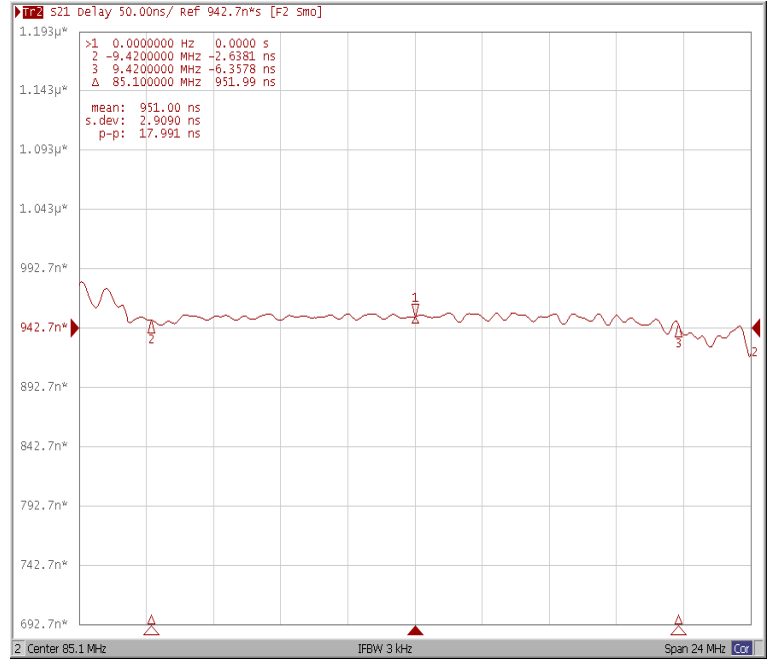




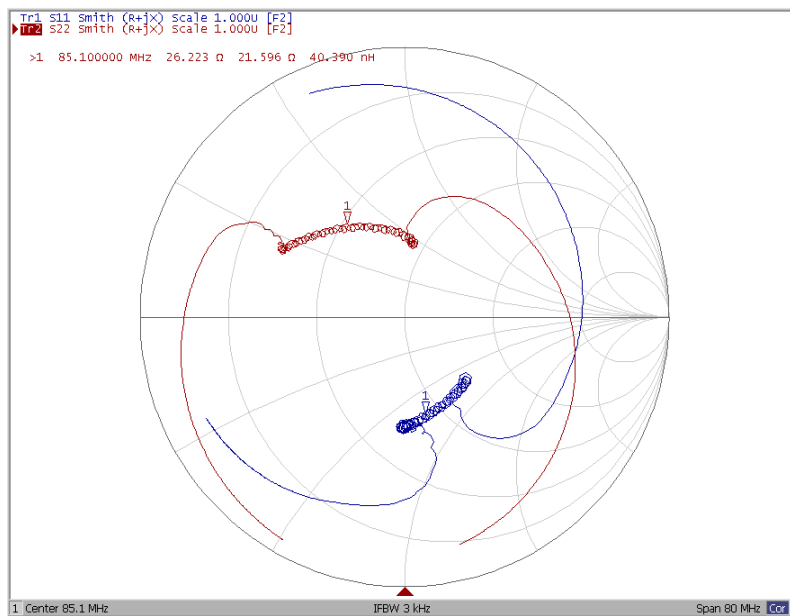
### Ripple Variation Fo±9.42MHz



### Group Delay Variation Fo±9.42MHz



### Smith Chart





### VSWR

