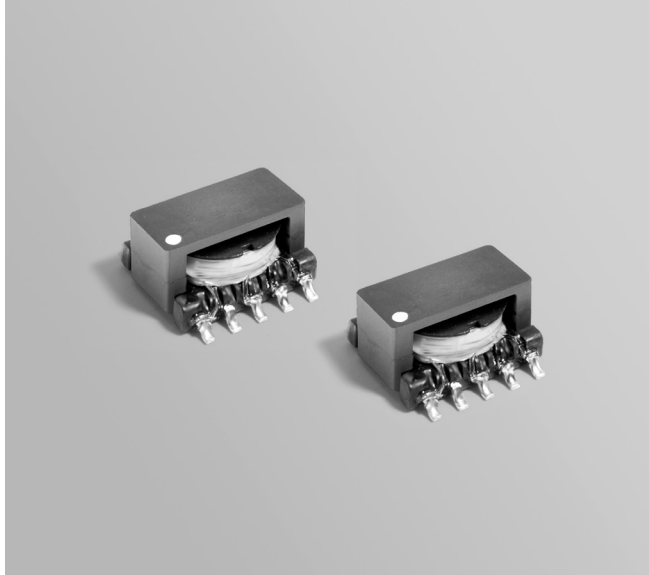




# Flyback Transformer

For Texas Instruments TPS23750 PoE Powered Device Controller



- Isolated non-synchronous flyback transformers developed for Texas Instruments PMP717 reference design.
- Designed for discontinuous conduction mode, 34 – 57 V input
- 1500 Vrms isolation primary to secondary windings

**Core material** Ferrite

**Terminations** RoHS tin-silver (96.5/3.5) over tin over nickel over phos bronze. Other terminations available at additional cost.

**Weight** 1.4 g

**Ambient temperature** –40°C to +125°C

**Storage temperature** Component: –40°C to +125°C.

Tape and reel packaging: –40°C to +80°C

**Resistance to soldering heat** Max three 40 second reflows at +260°C, parts cooled to room temperature between cycles

**Moisture Sensitivity Level (MSL)** 1 (unlimited floor life at <30°C / 85% relative humidity)

**Failures in Time (FIT) / Mean Time Between Failures (MTBF)**

38 per billion hours / 26,315,789 hours, calculated per Telcordia SR-332

**Packaging** 500 per 13" reel. Plastic tape: 24 mm wide, 0.36 mm thick, 16 mm pocket spacing, 6.13 mm pocket depth

**PCB washing** Tested with pure water or alcohol only. For other solvents, see Doc787\_PCB\_Washing.pdf

Part number <sup>1</sup>	Inductance at 0 Adc <sup>2</sup> ±10% (µH)	Inductance at Ipk <sup>3</sup> min (µH)	DCR max (Ohms)	Leakage Inductance <sup>4</sup> max (µH)	Turns ratio		Ipk <sup>3</sup> (A)	Output <sup>6</sup>
					pri : sec <sup>5</sup>	pri : bias		
C1453-AL_	50	40	0.185 (pins 3 – 1) 0.030 (pins 6 – 10) 0.030 (pins 7 – 9) 0.385 (pins 4 – 5)	1.10	1 : 0.166	1 : 0.5	1.22	3.3 V, 1.5A

1. When ordering, please specify **packaging** code:

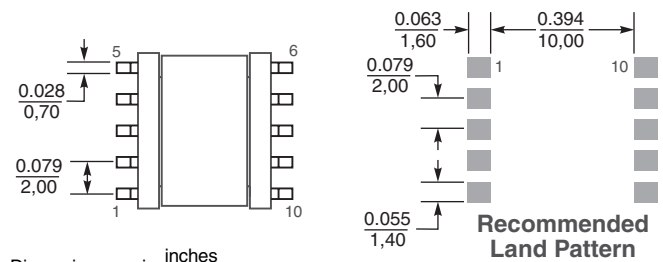
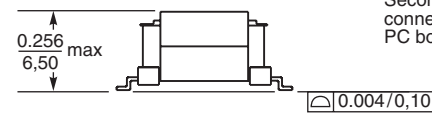
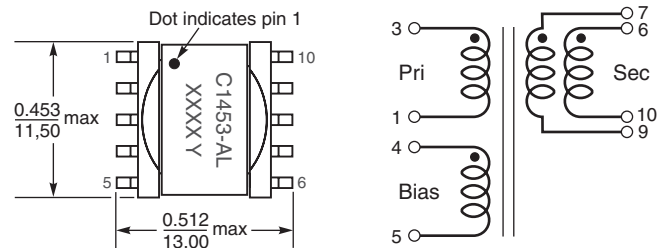
**C1453-ALD**

**Packaging:** D = 13" machine ready reel. EIA-481 embossed plastic tape (500 per full reel).

B = Less than full reel. In tape, but not machine ready. To have a leader and trailer added (\$25 charge), use code letter D instead.

- Inductance is for the primary, measured at 250 kHz, 0.3 Vrms.
- Peak primary current drawn at minimum input voltage.
- Leakage inductance is for the primary winding with the secondary windings shorted.
- Turns ratio is with the secondary windings connected in parallel.
- Output of the secondary is with the windings connected in parallel. Bias winding output is 10 V.
- Electrical specifications at 25°C.

Refer to Doc 362 "Soldering Surface Mount Components" before soldering.



Dimensions are in inches/mm



**US** +1-847-639-6400 sales@coilcraft.com  
**UK** +44-1236-730595 sales@coilcraft-europe.com  
**Taiwan** +886-2-2264 3646 sales@coilcraft.com.tw  
**China** +86-21-6218 8074 sales@coilcraft.com.cn  
**Singapore** + 65-6484 8412 sales@coilcraft.com.sg

Document 483 Revised 12/21/11

© Coilcraft Inc. 2013

This product may not be used in medical or high risk applications without prior Coilcraft approval. Specification subject to change without notice. Please check web site for latest information.