

B10

FEMALE HEADER PROFILE : 8.6mm STRAIGHT

PITCH: 2.54mm

MATERIAL

INSULATOR - PBT (UL 94V-0)
CONTACT - COPPER ALLOY

SPECIFICATIONS

CURRENT RATING

1 AMP DC

CONTACT RESISTANCE

30 MILLIOHM MAX.

INSULATION RESISTANCE

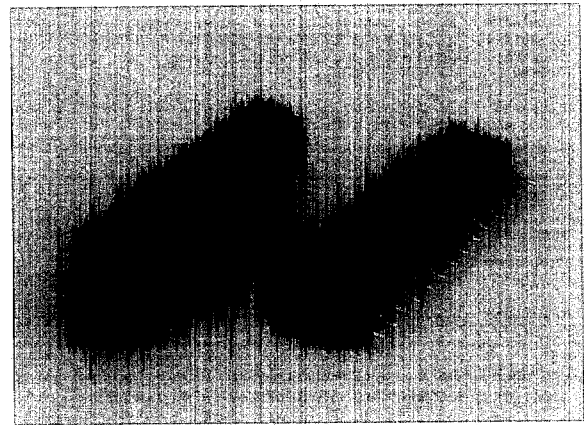
1000 MEGOHM MIN.

DIELECTRIC VOLTAGE

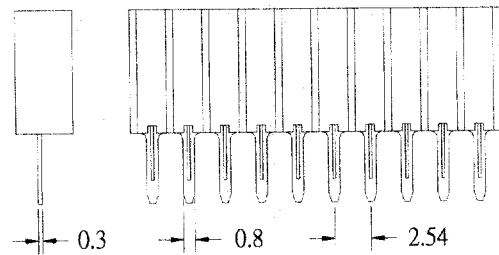
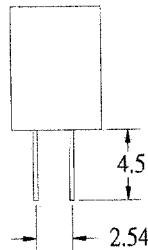
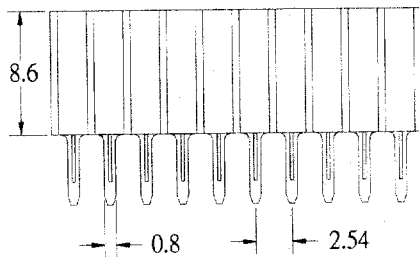
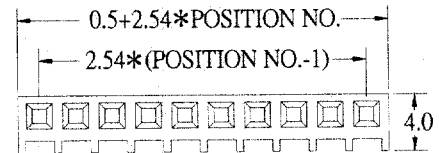
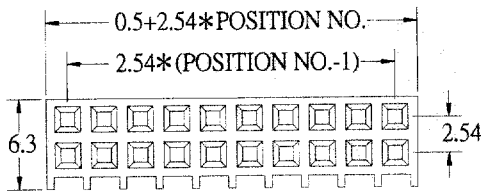
500V AC FOR ONE MINUTE

OPERATING TEMPERATURE

-40°C TO 105°C



B



HOW TO ORDER

B10 - 1 - 2 - 3 - 4

1.NO. OF CONTACT	2.CONTACT MATERIAL	3.CONTACT PLATING	4.INSULATOR COLOR
SINGLE ROW 1*2 - 1*40 DUAL ROW 2*2 - 2*40	A: BRASS B: PHOSPHOR BRONZE	T: TIN PLATED S: SELECTIVE G: GOLD FLASH A: 5u" INCH GOLD B: 10u" INCH GOLD C: 15u" INCH GOLD D: 30u" INCH GOLD	1. BLACK

