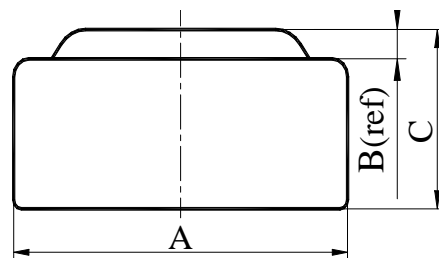
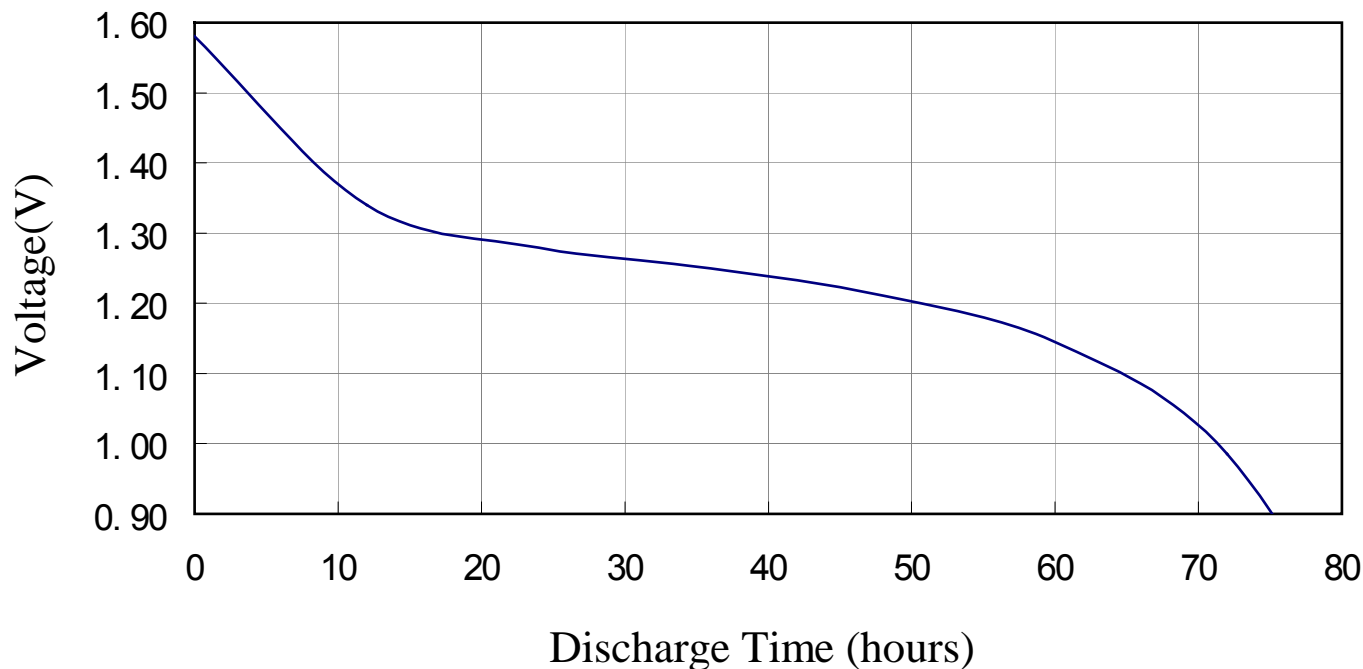


**Chemical System** : Alkaline manganese button batteries  
**Model No.** : LR626 (LR66 AG4 177)  
**Nominal Dimensions**:  $\Phi 6.80 \times 2.60$ mm  
**Nominal Voltage** : 1.50V  
**Average Weight** : 0.35g  
**Applications** : Watch, Calculator,  
 Electronic toy, etc.  
**Shelf Life** : Not less than 90% of the  
 service capacity, following  
 1st year storage at 20°C.  
**Loading** : 4700Ω(20°C)  
**Cut Off Voltage** : 0.90V  
**Capacity** : 18mAh



Dimensions	Unit: mm
A	6.70----6.80
B	0.25(ref)
C	2.40----2.60

**Typical Discharge Characteristics at 20**



SPEC.No.:REF-L66-0102

\*Manufacturer reserves the right to alter or amend the design, model and specification without prior notice.