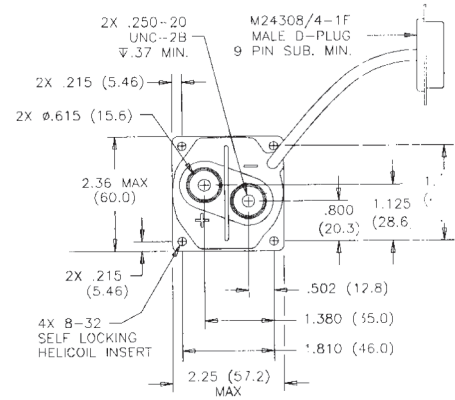
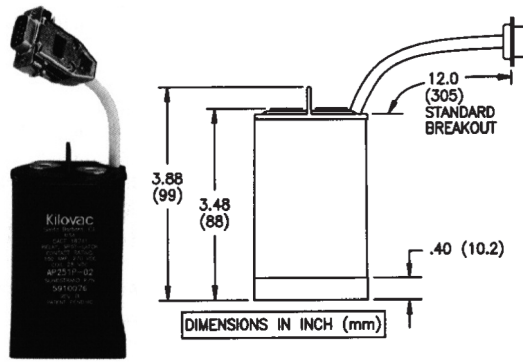


## AP265 (Form X, Electrically Held) & AP265P (Form P, Latching) 265 Amps

### CZONKA II Contactor

#### Product Facts

- 265 A carry, 1000 A overload @ 270 Vdc
- Bi-directional power switching
- Auxiliary Contacts
- Electrically held and latching coil versions
- Built-in coil drivers for electrically held (5W hold) and latching (coil pulser)
- Coil drivers EMC qualified to most of the requirements of MIL-STD-461D
- Versatile power, voltage, and current operating range
- Excellent for safety disconnect and transfer switch applications
- Designed for main generator loads
- Suitable for circuit protection and control
- Remote Power Controller version with overload protection available — contact factory for more information
- Hermetically-sealed contacts; can operate in harsh environments
- Space-rated version built in accordance with customers SCd
- Meets many requirements of MIL-PRF-32085



#### Product Specifications

**Contact Arrangement Mains** —  
 AP265X — Form X — SPST-NO  
 Form A — 2 x SPST-NO  
 AP265P — Form X — SPST  
 Form A — 2 x SPST

**Polarity (Carry and Switching)** —  
 Bi-directional

**Rated Resistive Load @ 270 Vdc** —  
 265 A

**Continuous Current Carry, Max.** —  
 265 A

**Overload Current @ 270 Vdc, Max.** —  
 Make and Break — 600 A  
 Break Only — 1000 A

**Contact Resistance, Max.** —  
 0.3 mohm

**Dielectric at Sea Level (< 1 mA leakage)** —  
 Power Terminals to Terminal — 1,000 Vrms  
 Power Terminals to All Other Points — 1,000 Vrms

**Shock, 11ms, 1/2 Sine (Peak)** —  
 25 g

**Vibration, Sinusoidal (55-2000 Hz, Peak)** — 10 g

**Operating Ambient Temperature Range** — -55°C to +85°C

**Load Life @ 270 Vdc, Min.** —  
 See graph above

**Operate Time (28 Vdc, 25°C)** —  
 Close (Includes Bounce), Typ. —  
 AP265X — 20 ms  
 AP265P — 10 ms

**Bounce (After Close Only), Max.** —  
 5 ms

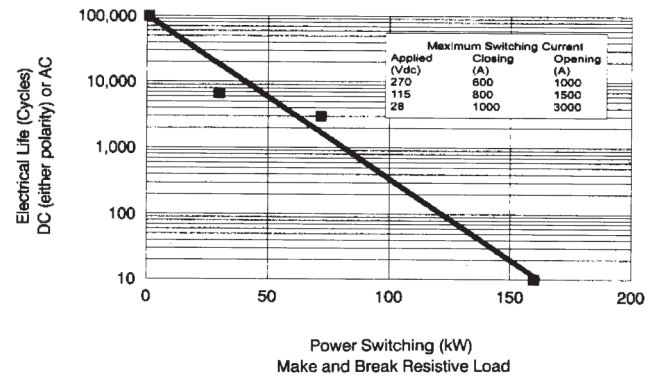
**Open (Includes Arcing), Max.** —  
 15 ms

**Insulation Resistance @ 500 Vdc, Min.** —  
 Initial/End of Life — 100 mohm/50 mohm

**Weight, Nominal** —  
 1.7 lb (0.77 kg)

#### Electrical Life Cycles vs Power Switching

(Data from 270 Vdc testing @ 265A, 95% Weibull Reliability)



#### Coil Data

	AP265X	AP265P
Type Driver	"PWM" Econ.	Pulser
Voltage, Nominal	28 Vdc	28 Vdc
Pickup (Close), Max.	20 Vdc	12 Vdc
Dropout (Open), Max.	11 Vdc	12 Vdc
Current @ 28 V, 25°C		
Inrush	1.8 A	2.6 A
Holding (Standby)	0.20 A	<0.05 A
Inrush Time, Max.	100 ms	100 ms

#### Ordering Information

Sample Part Number ▶ **AP265 X E 9 7**

**Series:** \_\_\_\_\_

**Contact Form:** \_\_\_\_\_  
 X = SPST-NO, Electrically Held  
 P = SPST, Latching

**Coil Voltage:** \_\_\_\_\_  
 E = 28 Vdc

**Power Terminals:** \_\_\_\_\_  
 9 = Female Threads, .250-20

**Mounting:** \_\_\_\_\_  
 7 = Panel Mount, Helcoil Locking

For factory-direct application assistance, dial 800-253-4560, ext. 2055, or 805-220-2055.