

# EDAL INDUSTRIES, INC.

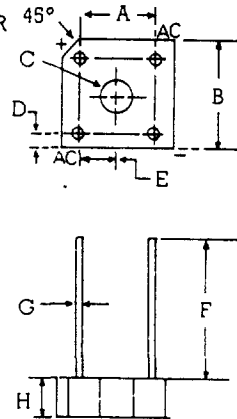
51 COMMERCE STREET\*EAST HAVEN, CONNECTICUT 06512\*TELEPHONE (203)-467-2591\*FAX (203)-469-5928  
 Internet: <http://www.eemonline.com/edal> Email: [edalind@aol.com](mailto:edalind@aol.com)

## FAST RECOVERY BRIDGE RECTIFIERS

### FBR1000 SERIES. 10 AMPS. PLASTIC CASE.

BR800  
 BR1000  
 (Plastic)

HOLE FOR  
 #6 Screw



DIM.	INCHES		MILLIMETER	
	MIN.	MAX.	MIN.	MAX.
A	0.48	0.52	12.2	13.2
B	0.73	0.77	18.54	19.56
C	0.142	0.158	3.6	4.0
D	0.21	0.29	5.33	7.37
E	0.21	0.29	5.33	7.37
F	0.75		19.1	
G	0.048	0.052	1.2	1.3
H	0.25	0.30	6.35	7.6

Type	Max. Average Rectified Current IF (AV) @ TAR Load		Input Voltage Recommended	Peak Inverse Voltage	Max. Forward Peak Surge Current	Max. Forward Voltage @ TA = 25°C		Max Reverse Current @ TA = 25°C	Max. Reverse Recovery Time
	(A)	(°C)	V <sub>RMS</sub>	V <sub>RRM</sub>	I <sub>FSM</sub>	V <sub>F</sub> at I <sub>F</sub> (AV)	I <sub>R</sub>	t <sub>rr</sub>	
FBR1000	10	55	20	50	250	1.3	6.0	10	150
FBR1001	10	55	40	100	250	1.3	6.0	10	150
FBR1002	10	55	80	200	250	1.3	6.0	10	150
FBR1004	10	55	125	400	250	1.3	6.0	10	150
FBR1006	10	55	250	600	250	1.3	6.0	10	250
FBR1008	10	55	380	800	250	1.3	6.0	10	500
FBR1010	10	55	440	1000	250	1.3	6.0	10	500

THE PLASTIC MATERIAL CARRIES U/L RECOGNITION 94V-0.

B175

**DIODES \* BRIDGES \* POWER RECTIFIERS \* HIGH VOLTAGE ASSEMBLIES \*  
 VARISTORS \* MOV'S \* TVS \* SPECIAL DESIGNS**

\*EDALS00052\*

# Medium Current Curves

