

**SPECIFICATIONS**

**SCA-2 Connector**

**Mechanical**

**Contact Retention Force:** 300g min.  
**Mating Force:** 90 g max. Per Contact Pair  
**Unmating Force:** 15g max. Per Contact Pair  
**Durability:** 500 Cycles

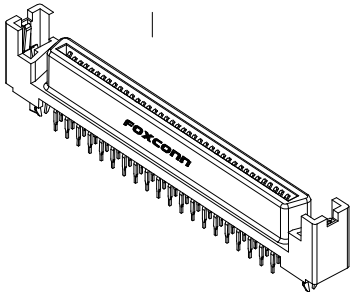
**LS Series**  
**Vertical, T/H Type**  
**Receptacle**  
**1.27mm [.050"] Pitch**

**Electrical**

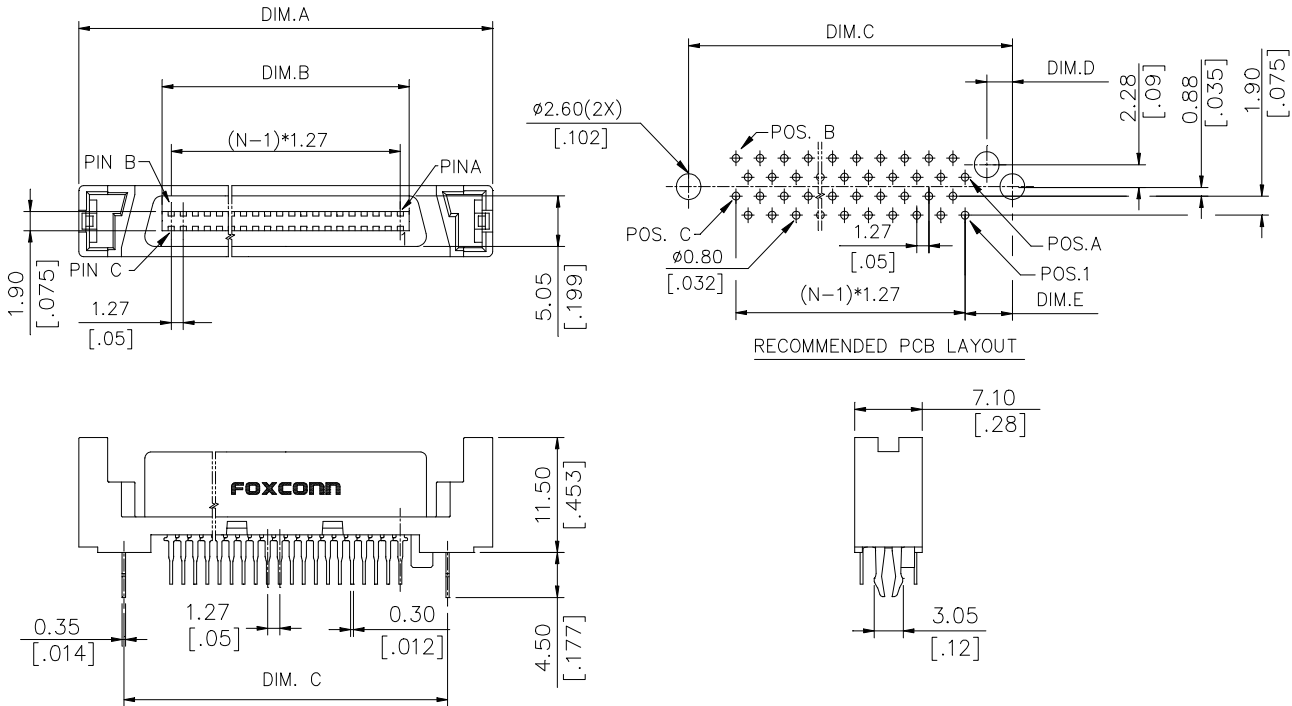
**Voltage Rating:** 250V  
**Current Rating:** 3.0Amps Max In Temp. Rise.  
**Contact Resistance:** 30mW max.  
**Dielectric Withstanding Voltage:** 300V AC  
**Insulation Resistance:** 1000MW min.

**Physical**

**Housing:** Thermoplastic, UL 94V-0 rated in Black Color  
**Contact:** Phosphor Bronze  
**Plating:** See "ORDERING INFORMATION"  
**Metal Hold Down:** Phosphor Bronze  
**Operating Temperature:** -55 to +105



**+ DRAWING**



**ORDERING INFORMATION**

**PRODUCT NO.:** LS 2 5 \* \* \* - A \* 4 E

Sca-2 \_\_\_\_\_  
 Receptacle \_\_\_\_\_  
 Mating End Type \_\_\_\_\_  
 5=T/H, Vertical \_\_\_\_\_  
 No. Of Pos \_\_\_\_\_  
 20=40 Pos \_\_\_\_\_  
 40=80 Pos \_\_\_\_\_  
 Mating Area Plating \_\_\_\_\_  
 3=30u" Gold \_\_\_\_\_  
 H=30u" Gold With RoHS Compliance \_\_\_\_\_

Termination Side  
 4=4 Rows \_\_\_\_\_  
 Tail Length \_\_\_\_\_  
 3=3.18 mm \_\_\_\_\_  
 5=4.57 mm \_\_\_\_\_  
 6=3.40 mm \_\_\_\_\_  
 9=2.54 mm \_\_\_\_\_

A: Standard Height

LS2540*-B*4E	80	40	41	80	40	69.00 [2.719]	51.44 [2.027]	59.51 [2.345]	2.70 [.106]	4.99 [.197]
LS2520*-B*4E	40	20	21	40	20	43.60 [1.718]	26.04 [1.026]	34.11 [1.344]	2.70 [.106]	4.99 [.197]
P/N	POS. N	PIN A	PIN B	PIN C	DIM. A	DIM. B	DIM. C	DIM. D	DIM. E	

All specification & dimensions are subject to change, please call your nearest Foxconn sales representative for update information.