

## Air Cooled Single Phase Diode Stack

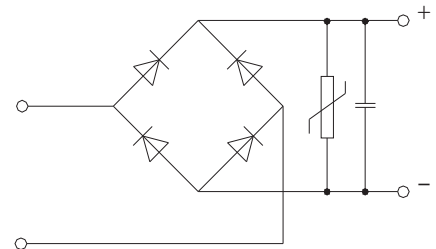
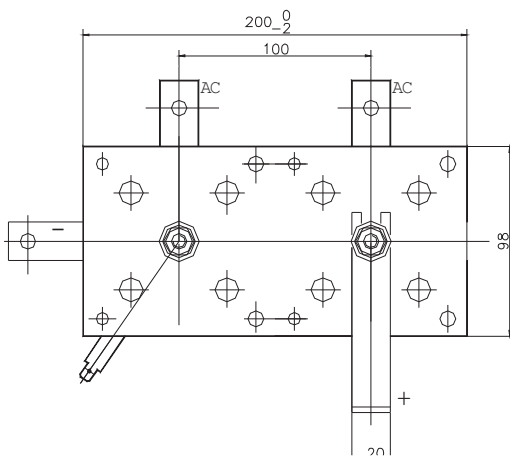
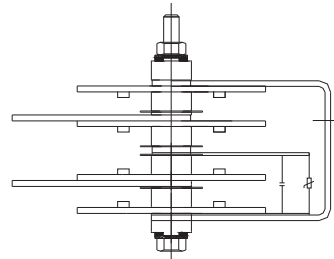
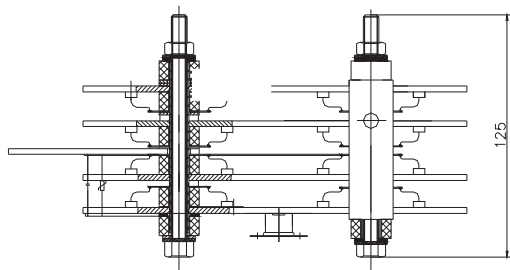
### FEATURES

- Air-cooling fixture
- Easy connection
- Current rating : 200A-500A / 500V
- Stack of higher voltage are available
- Upon request

### APPLICATION

- Welder

### OUTLINE



## NACS200~NACS500

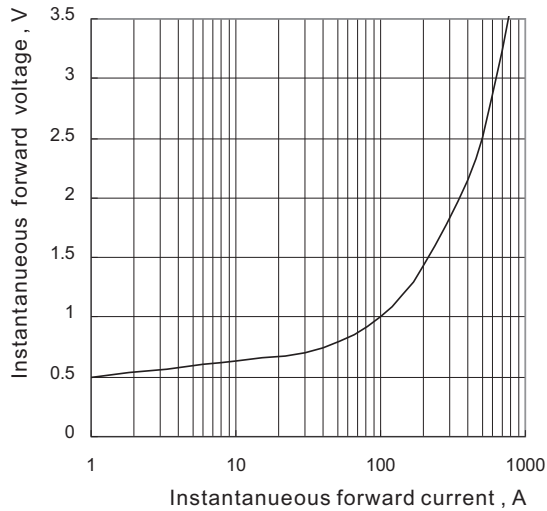
Part Number	$I_o$ ( $T_a=45^\circ\text{C}$ ) A	$V_{RRM}$ V	$I_{RRM}$ mA	$V_{fm}$ V	$T_{jm}$ C
NACS-200	200	500	5	1.3	60
NACS-300	300	500	6	1.3	65
NACS-350	350	500	7	1.3	70
NACS-400	400	500	8	1.3	80
NACS-500	500	500	10	1.3	85

$T_{jm} = 3 \text{ m/s}$

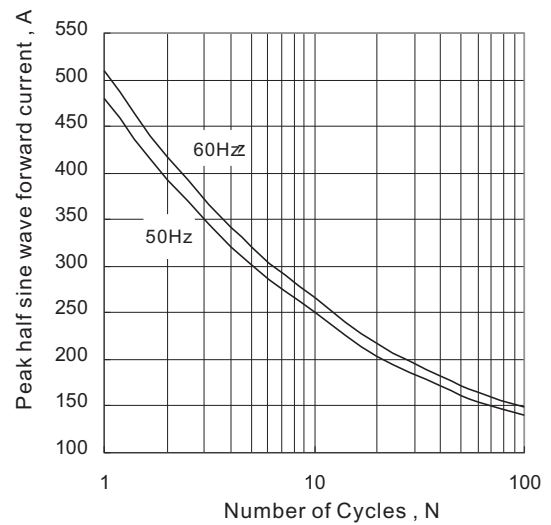
$T_{stg} : -40 \sim 160 \text{ }^\circ\text{C}$

Mounting Base Torque > 12.5 Nm

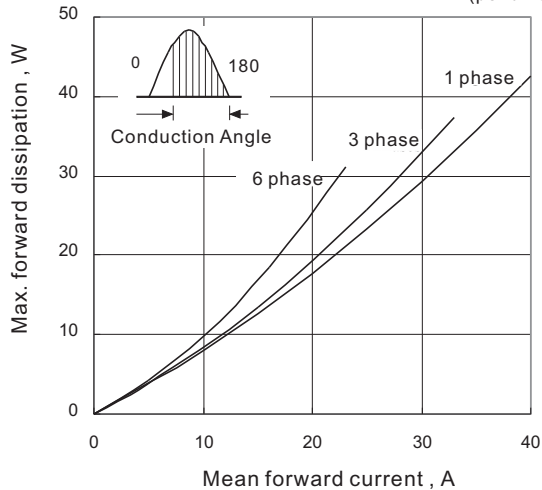
Peak forward voltage vs. Peak forward current (per unit)



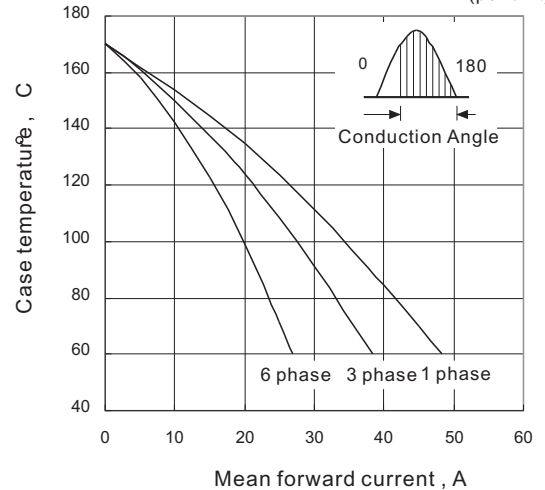
Surge current vs. Cycles ( per unit )



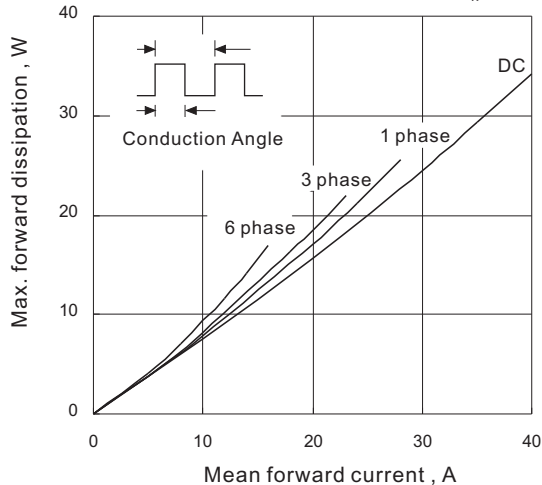
Max. Power dissipation vs. Mean forward current (per unit)



Max. Case temperature vs. Mean forward current (per unit)



Max. Power dissipation vs. Mean forward current (per unit)



Max. Case temperature vs. Mean forward current (per unit)

