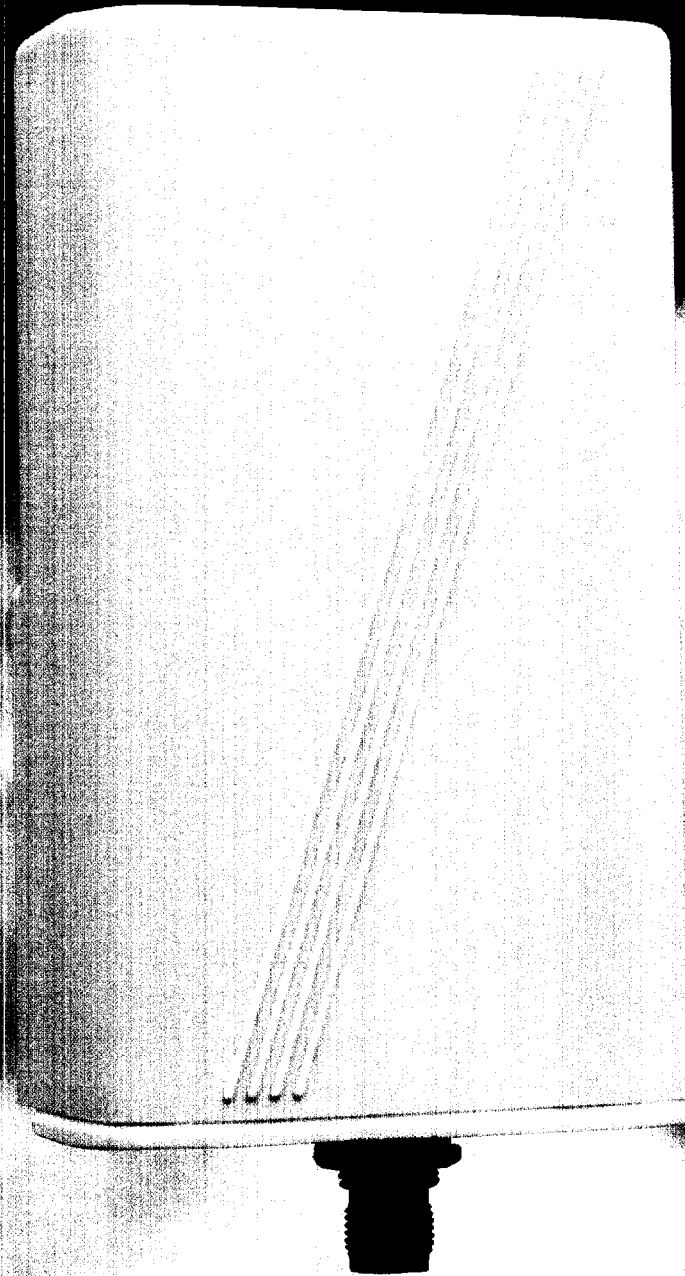




COMSAT RSI

Wireless Antennas



MULTI PURPOSE MICROCELL ANTENNA

- GSM, PCS/DIGI, MOBILE TELEPHONY, ISM BANDS
- INDOOR/OUTDOOR APPLICATIONS
- 7-10dB GAIN
- MOUNTS TO WALL OR POLE

COMSS004





CRSI's Microcell Antenna Range

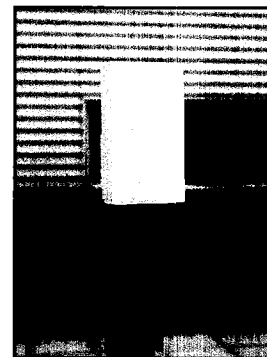
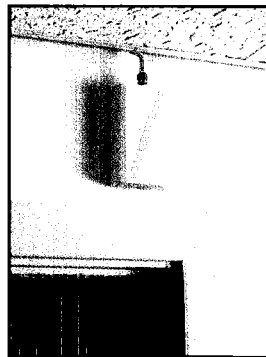
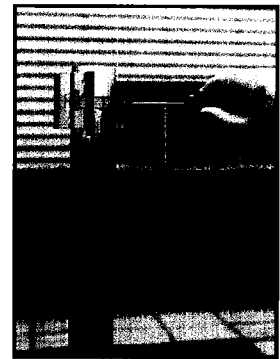
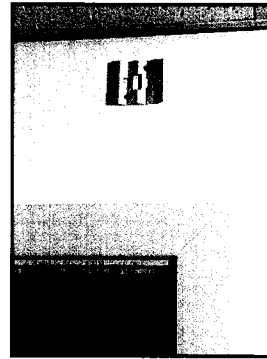
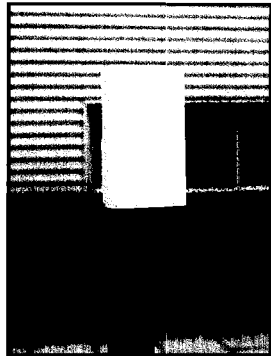
*is designed to give
Local Area
Coverage for voice
and data wherever
it is needed. All
antennas from the
range can be used
for both indoor and
outdoor applications,
in locations such as
railway stations,
shopping malls, offices
and factories, where signal
quality needs to be improved
or where extra capacity is
needed to satisfy high traffic
demand.*

T E C H N I C A L D A T A

ANTENNA SLIDES OVER THE BRACKET UNTIL THE SELF-LOCKING MECHANISM ENGAGES

BRACKET CAN BE MOUNTED ON A WALL OR A POLE

ANTENNA CAN BE USED IN AN INDOOR OR OUTDOOR ENVIRONMENT



ANTENNA TYPE	PCNM080-014T	PCSM080-014T	RTM080-014T	ISMM080-014T
APPLICATION	PCN	PCS/DECT	Rural Tel.	ISM/WLAN
ELECTRICAL DATA				
Frequency Range (Mhz)	1710-1880	1850-1990	2100-2300	2300-2500
Minimum Gain (dBi)	7	7.5	8	8.5
Impedance (ohms)	50	50	50	50
Maximum VSWR	1.5:1	1.5:1	1.5:1	1.5:1
Polarisation	Vertical	Vertical	Vertical	Vertical
Azimuth Beamwidth (3dB)	85°	85°	85°	85°
Elevation Beamwidth (3dB)	50°	50°	50°	50°
Maximum Input Power (W)	50	50	50	50
Front to Back Ratio (dB)	12	12	12	12
MECHANICAL DATA				
Connector	TNC Female	TNC Female	TNC Female	TNC Female
Dimensions (mm)	155x75x45	155x75x45	155x75x45	155x75x45
Housing Material	ABS	ABS	ABS	ABS
Colour	RAL 7035	RAL 7035	RAL 7035	RAL 7035

Specifications subject to change, without prior notice,

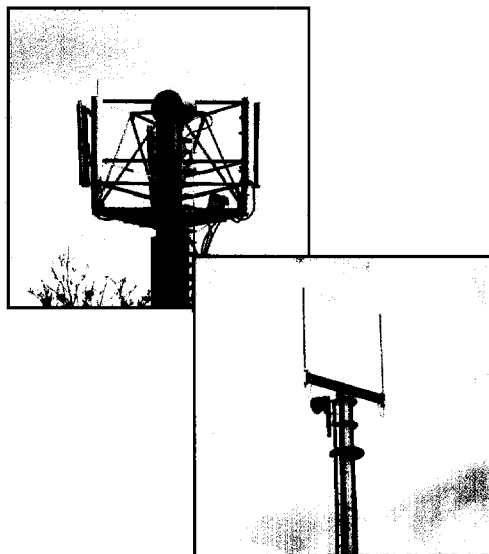


The voice of experience in worldwide wireless antenna systems.

- *Over 40 years international antenna experience, with installations in over 80 countries.*
- *World leader in stripline technology for antennas.*
- *Quality approved to ISO 9001.*
- *Over 150,000 stripline antennas delivered since 1991 into PCN, PCS, GSM, DECT and Wireless Local Loop markets.*
- *Distributors and representatives throughout the world.*

Our production units in the UK and the USA are supported by well - equipped antenna test ranges and an integrated engineering department with internationally experienced installation and commissioning engineers available for worldwide deployment.

Worldwide network services include site surveys, project management, turnkey installation services, system integration and maintenance support.



For further information please contact:

UK:

**Cosat RSI Wireless Antennas
Knight Road
Rochester, Kent
England. ME2 2AX**

Tel: +44 (0) 1634 715544

Fax: +44 (0) 1634 715742

E Mail: 101353.2365@compuserve.com

USA:

**Cosat RSI Wireless Antennas
1757 South Winthrop Drive
Des Plaines
Illinois 60018**

Tel: +1 847 298 9420

Fax: +1 847 635 7946

E mail: 103236.2676@compuserve.com