

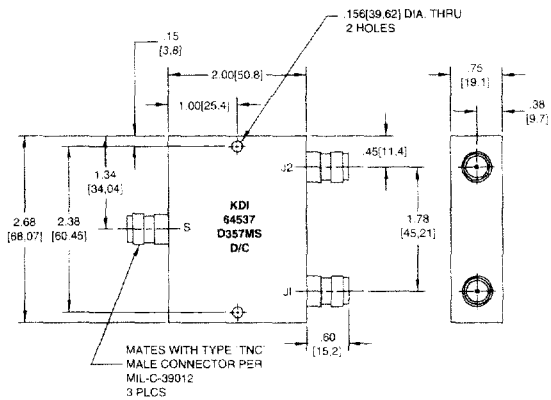
2 WAY DIVIDER/COMBINER, POWER

ELECTRICAL SPECIFICATIONS

Model:	D357MS
Connectors:	TNC
Frequency Range:	850-900 MHz
Insertion Loss:	3.30 dB Maximum, 3.10 dB Typical
Isolation:	22.0 dB Minimum
Amplitude Balance:	±0.2 dB Maximum
Phase Balance:	±1° Maximum
VSWR Input:	1.20:1 Typical
Output:	1.35:1 Typical
Operating Temperature:	-30° to +70° C

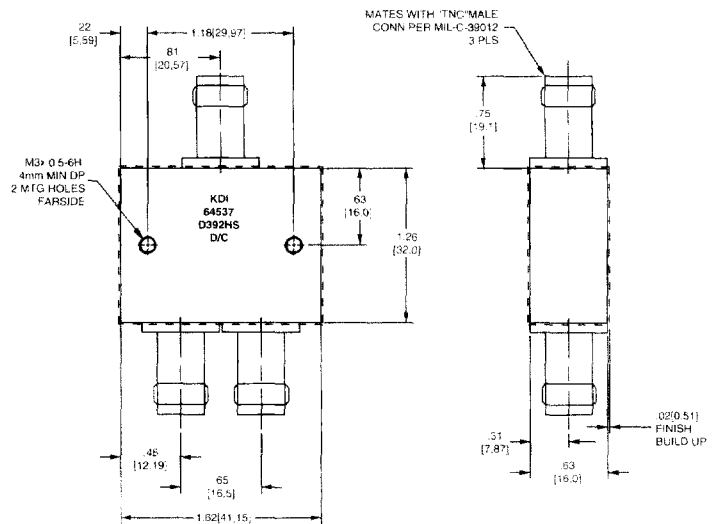
Note:

As a combiner input power is 2 watts maximum per port.
Each input port is able to handle 5 watts if proper heat sink is used.



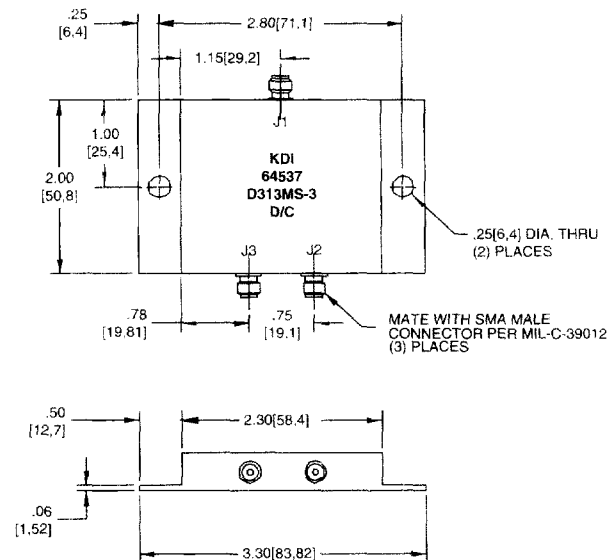
ELECTRICAL SPECIFICATIONS

Model:	D392HS
Connectors:	TNC
Frequency Range:	810-920 MHz
Insertion Loss:	0.2 dB Maximum
VSWR:	1.2:1 Maximum
Isolation:	22 dB Minimum
Amplitude Balance:	±0.1 dB Maximum
Phase Balance:	±1° Maximum
RF Power:	1 W at each of the combined ports
Third Ord Incp:	+40 dBm Minimum
Operating Temperature:	-30° to +70° C



ELECTRICAL SPECIFICATIONS

Model:	D313MS-3
Connectors:	SMA
Frequency Range:	0.8-2.0 GHz
VSWR:	1.25:1 Maximum J1-J3
Isolation:	20 dB Minimum J2-J3
Insertion Loss:	3.5 dB Maximum J1-J2 + J1-J3
Internal Load Protection:	0.15 watts Maximum
Input Power:	1 watt Maximum
Amplitude Balance:	±0.1 dB
Phase Balance:	±2° Maximum
Operating Temperature:	-30° to +70° C



KDI/TRIANGLE
An MCE Company CORPORATION

60 South Jefferson Road, Whippany, NJ 07981
Tel: 973-887-8100 • Fax: 973-884-0445
E-Mail: kdisales@aol.com
See us on the web @ www.kditriangle.com

