

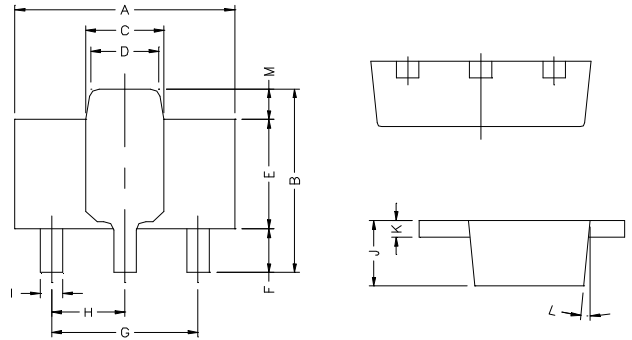
Description

The SM79L15 is monolithic fixed voltage regulator integrated circuit. They are suitable for applications that require supply current up to 100mA.

Features

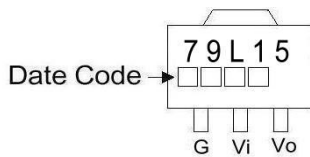
- * Short Circuit Current Limiting
- * Output Current Up To 100mA
- * Thermal Overload Shutdown Protection

SOT-89



REF.	Millimeter		REF.	Millimeter	
	Min.	Max.		Min.	Max.
A	4.4	4.6	G	3.00	REF.
B	4.05	4.25	H	1.50	REF.
C	1.50	1.70	I	0.40	0.52
D	1.30	1.50	J	1.40	1.60
E	2.40	2.60	K	0.35	0.41
F	0.89	1.20	L	5° TYP.	
			M	0.70 REF.	

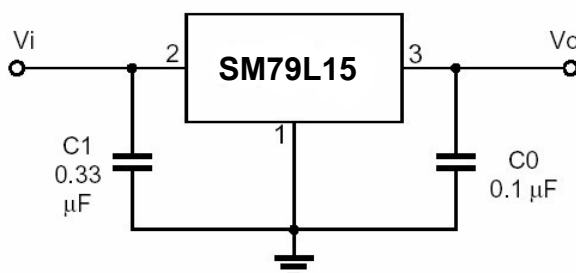
Marking :



Absolute Maximum Ratings

Parameter	Symbol	Ratings	Unit
Input Voltage	V_{IN}	-35	V
Output Current	I_o	100	mA
Operating Junction Temperature Range	T_j	0~+125	°C
Storage Temperature Range	T_{stg}	-55~+150	°C
Total Power Dissipation	P_D	350	mW

Application Circuit



Electrical Characteristics at Ta=25°C (Vin=-23, Io=40mA, Tj=25°C, C1=0.33uF, Co=0.1uF unless otherwise specified)

Rank A (3%)				Unit	Test Conditions
Symbol	Min.	Typ.	Max.		
VO	-14.55	-15	-15.45	V	Vin=-23V ~ -30V, Io=1mA ~ 40mA
	-14.55	-15	-15.45		Vin=-17.5V ~ Vmax, Io=1mA ~ 70mA (Note1)
ΔVO (Line Regulation)	-	-	300	mV	Vin=-17.5V ~ -30V, Io=40mA
	-	-	250		Vin=-20V ~ -30V, Io=40mA
ΔVO (Load Regulation)	-	-	150	mV	Vin=-23V, Io=1mA ~ 100mA
	-	-	75		Vin=-23V, Io=1mA ~ 40mA
IQ	-	-	6.0	mA	Tj=25°C, Vin=-23V, Io =40mA
ΔIQ	-	-	1.5	mA	Vin=-20V ~ -30V, Io=40mA
	-	-	0.1		Vin=-23V, Io=1mA ~ 40mA
Vn	-	90	-	uV	f =10Hz ~ 100KHz
RR	34	39	-	db	Vin=-18.5V ~ -28.5V, Io=40mA, f=120Hz
VD	-	1.7	-	V	Tj=25°C

Electrical Characteristics at Ta=25°C (Vin=-23, Io=40mA, Tj=25°C, C1=0.33uF, Co=0.1uF unless otherwise specified)

Rank B (5%)				Unit	Test Conditions
Symbol	Min.	Typ.	Max.		
VO	-14.25	-15	-15.75	V	Vin=-23V ~ -30V, Io=1mA ~ 40mA
	-14.25	-15	-15.75		Vin=-17.5V ~ Vmax, Io=1mA ~ 70mA (Note1)
ΔVO (Line Regulation)	-	-	300	mV	Vin=-17.5V ~ -30V, Io=40mA
	-	-	250		Vin=-20V ~ -30V, Io=40mA
ΔVO (Load Regulation)	-	-	150	mV	Vin=-23V, Io=1mA ~ 100mA
	-	-	75		Vin=-23V, Io=1mA ~ 40mA
IQ	-	-	6.0	mA	Tj=25°C, Vin=-23V, Io =40mA
ΔIQ	-	-	1.5	mA	Vin=-20V ~ -30V, Io=40mA
	-	-	0.1		Vin=-23V, Io=1mA ~ 40Ma
Vn	-	90	-	uV	f =10Hz ~ 100KHz
RR	34	39	-	db	Vin=-18.5V ~ -28.5V, Io=40mA, f=120Hz
VD	-	1.7	-	V	Tj=25°C

Note: 1. Power dissipation < 0.5W