

RF AMPLIFIER

MODEL *TM9308*

Available as: TM9308, 4 Pin 0.500" TO-8 (T4)
 TN9308, 4 Pin 0.450" Sq. Surface Mount (SM3)
 BX9308, SMA Connectorized Housing (H1)
 BXP9308, SMA Connectorized Housing (HPak)

Features

- High Output Power: +26 dBm Typical
- Ultra Broad Bandwidth 20-3000 MHz
- Cross to the Cougar AP3008, our Model TM9308
- Cross to the Cougar ACP3008, our Model BXP9308
- Screening to the Tables of MIL-STD-883 Available

Specifications

CHARACTERISTIC	TYPICAL Ta= 25 °C	MIN/MAX Ta = -55 °C to +85 °C
Frequency	10 - 3200 MHz	20 - 3000 MHz
Gain	12.5 dB	10.5 dB Min.
Gain Flatness	+/- 0.5 dB	+/- 0.9 dB Max.
Noise Figure (200 - 3000 MHz)	3.0 dB	4.3 dB
VSWR In Out	1.7:1 1.7:1	2.0:1 Max. 2.0:1 Max.
Power @ 1 dB Comp. (20-2500 MHz) (2500-3000 MHz)	+26.0 dBm +25.0 dBm	+24.5 dBm Min. +23.0 dBm Min.
Reverse Isolation	-21 dB	-
Power Vdc mA	+15 185	+15 190 Max.

Typical Intermodulation Performance at 25 °C

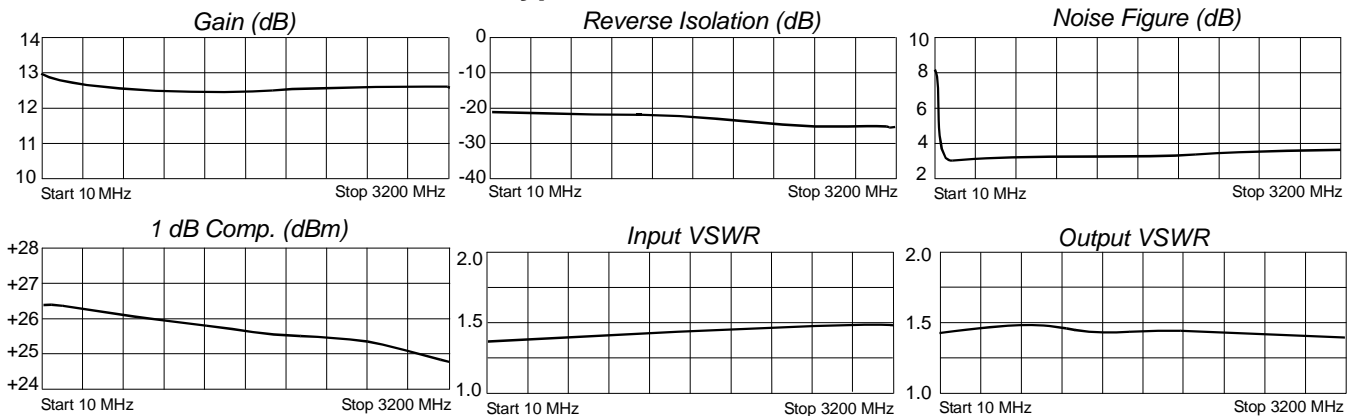
Second Order Harmonic Intercept Point.....+64 dBm (Typ.)
 Second Order Two Tone Intercept Point.....+58 dBm (Typ.)
 Third Order Two Tone Intercept Point.....+40 dBm (Typ.)
 (Typical at 25°C under a +15 volt supply)

Maximum (No Damage) Ratings

Ambient Operating Temperature -55°C to +100 °C
 Storage Temperature -62°C to +125 °C
 Case Temperature +125 °C
 DC Voltage +18 Volts
 Continuous RF Input Power +20 dBm
 Short Term RF Input Power 100 Milliwatts (1 Minute Max.)
 Maximum Peak Power 0.5 Watt (3 µsec Max.)

Note: Care should always be taken to effectively ground the case of each unit.
 Revision 5/14/2012

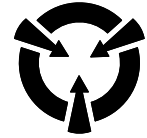
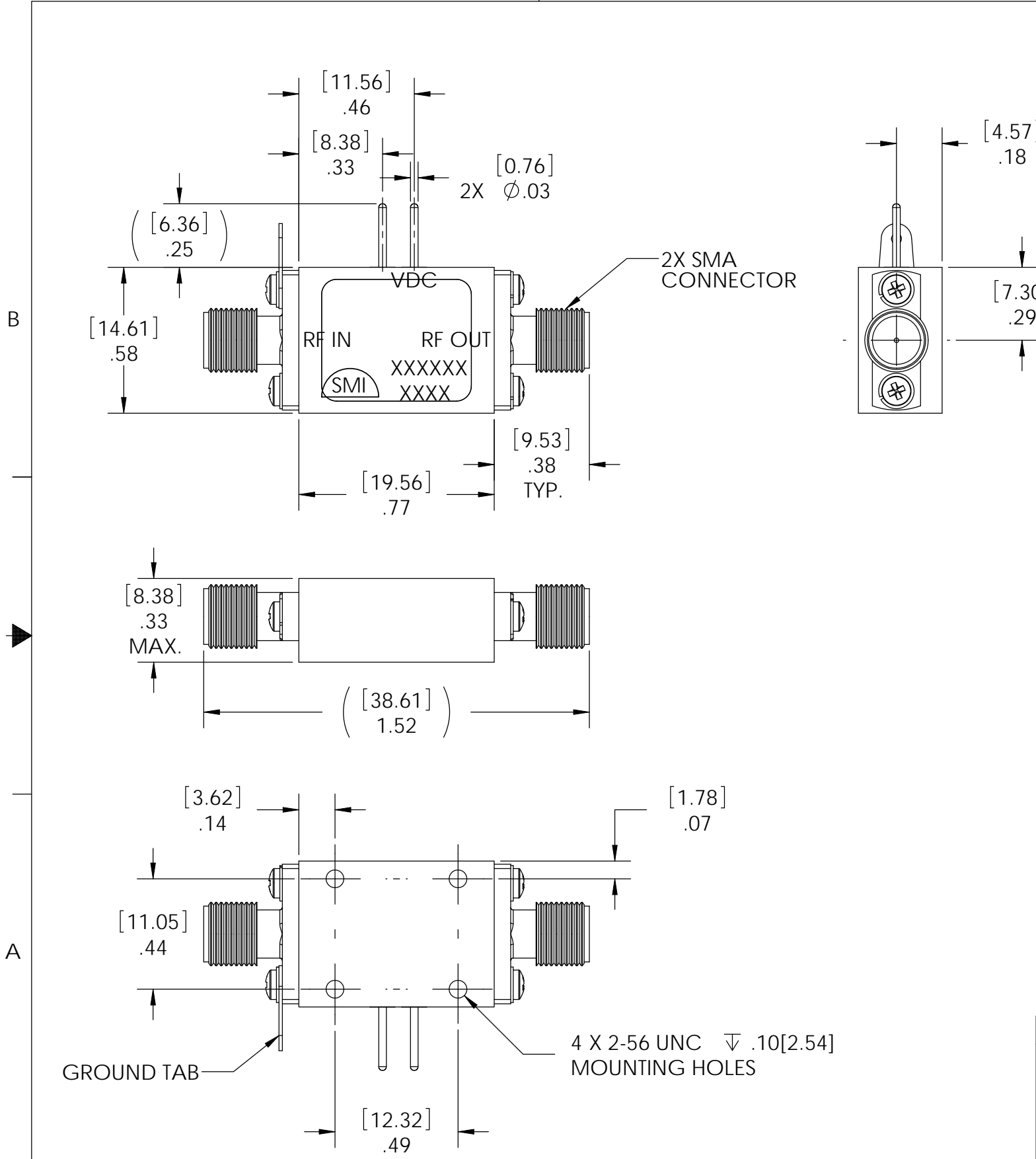
Typical Performance Data



Legend ——— +25 °C - - - - +85 °C ······ -55 °C



REVISIONS				
ECN	REV.	DESCRIPTION	CHNG/DATE	APPVD/DATE
XXX	P1	PRELIMINARY RELEASE	2012/05/14	



CAUTION

THIS ASSEMBLY CONTAINS PARTS SENSITIVE TO DAMAGE BY ELECTROSTATIC DISCHARGE (ESD). USE ESD PRECAUTIONARY PROCEDURES WHEN TOUCHING, REMOVING OR INSERTING

SEE SEPARATE PARTS LIST IN ELECTRONIC STORAGE

UNLESS OTHERWISE SPECIFIED		3rd ANGLE PROJECTION		SPECTRUM MICROWAVE, INC 2707 Black Lake Place Philadelphia, PA 19154-1008 (USA)			
* INTERPRET DRAWING IAW ASME Y14.100-2004 * DIMENSIONING AND TOLERANCING IAW ASME Y14.5-1994 * PARENTHETICAL INFORMATION FOR REFERENCE ONLY * DIMENSIONAL LIMITS APPLY BEFORE PROCESSES * DIMENSIONS ARE IN INCHES * TOLERANCES ARE: ANGLES ±1.0° * SURFACE FINISH * REMOVE ALL BURRS AND SHARP EDGES .010 RAD MAX. * CONCENTRICITY MACHINED DIA: .002 FIM * MACHINED TOOL MISMATCH: .002 MAX.		ANSI					TITLE <h3>OUTLINE, HPAK</h3>
63 2 PLACE DECIMAL ±.02 3 PLACE DECIMAL ±.005		DRAWN WAR	DATE 2012/05/14	SIZE B	CAGE CODE 60979	DWG NO. 088-00304	
DO NOT SCALE DRAWING		CHECKED	ENGRG H PHAM	DATE 2012/05/14	SCALE: 1.5:1	SHEET 1 OF 1	

SPECTRUM MICROWAVE PROPRIETARY INFORMATION
 THIS DOCUMENT IS THE SOLE PROPERTY OF SPECTRUM MICROWAVE, INC. THE RELEASE OF DATA CONTAINED IN THIS DOCUMENT AND THE REPRODUCTION OF THIS DOCUMENT, IN WHOLE OR IN PART, WITHOUT THE WRITTEN PERMISSION OF SPECTRUM MICROWAVE, INC ARE PROHIBITED.