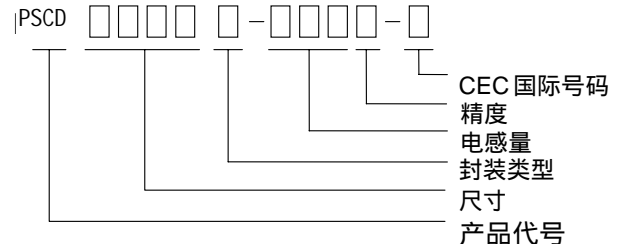




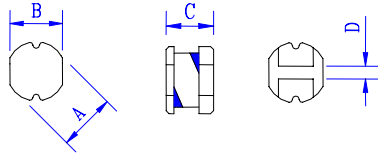
PSCD 系列高功率表面贴装型电感是有出色的高抗饱和性能和低成本的特点,可广泛用于各类 DC-DC 变换器和充电器中作储能电感和滤波电感。

产品型号说明

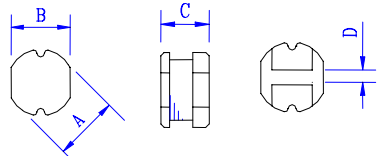


外形和尺寸

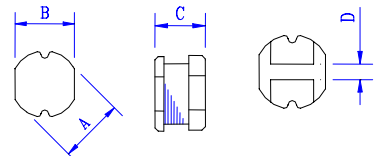
PSCD0403 (1μH ~ 68μH)



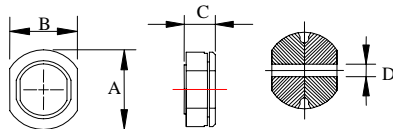
PSCD0703 (10μH ~ 330μH)



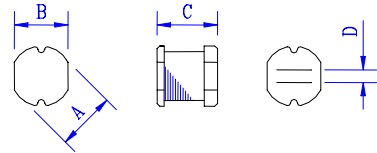
PSCD1004 (10μH ~ 560μH)



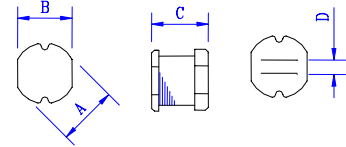
PSCDR1005B (10μH ~ 470μH)



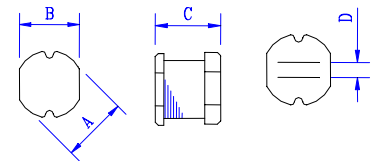
PSCD0504 (10μH ~ 220μH)



PSCD0705 (10μH ~ 470μH)



PSCD1005 (10μH ~ 820μH)



尺寸(mm)

尺寸	PSCD0403	PSCD0504	PSCD0703	PSCD0705	PSCD1004	PSCD1005	PSCDR1005B
A	4.5 ± 0.3	5.8 ± 0.3	7.8 ± 0.3	7.8 ± 0.3	10.0 ± 0.3	10.0 ± 0.4	10.0 ± 0.4
B	4.0 ± 0.3	5.2 ± 0.3	7.0 ± 0.3	7.0 ± 0.3	9.0 ± 0.3	9.0 ± 0.4	9.0 ± 0.4
C	3.2 ± 0.3	4.5 ± 0.4	3.5 ± 0.5	5.0 ± 0.5	4.2 ± 0.5	5.4 ± 0.4	5.0 ± 0.5
D	1.2	1.3	2.1	2.1	2.1	2.1	2.4

标准特性

规格	电感量 (μH)	直流电阻(Max)							工作电流						
		PSCD 0403	PSCD 0504	PSCD 0703	PSCD 0705	PSCD 1004	PSCD 1005	PSCDR 1005B	PSCD 0403	PSCD 0504	PSCD 0703	PSCD 0705	PSCD 1004	PSCD 1005	PSCDR 1005B
1R0	1.0	0.033	-	-	-	-	-	-	3.800	-	-	-	-	-	-
1R4	1.4	0.038	-	-	-	-	-	-	3.300	-	-	-	-	-	-
1R8	1.8	0.042	-	-	-	-	-	-	2.910	-	-	-	-	-	-
2R2	2.2	0.047	-	-	-	-	-	-	2.600	-	-	-	-	-	-
2R7	2.7	0.052	-	-	-	-	-	-	2.430	-	-	-	-	-	-
3R3	3.3	0.058	-	-	-	-	-	-	2.150	-	-	-	-	-	-
3R9	3.9	0.076	-	-	-	-	-	-	1.980	-	-	-	-	-	-
4R7	4.7	0.094	-	-	-	-	-	-	1.700	-	-	-	-	-	-
5R6	5.6	0.101	-	-	-	-	-	-	1.600	-	-	-	-	-	-
6R8	6.8	0.117	-	-	-	-	-	-	1.410	-	-	-	-	-	-
8R2	8.2	0.132	-	-	-	-	-	-	1.260	-	-	-	-	-	-
100	10	0.182	0.10	0.08	0.07	0.05	0.06	0.06	1.150	1.44	1.44	2.30	2.38	2.60	2.06
120	12	0.210	0.12	0.09	0.08	0.06	0.07	0.07	1.050	1.40	1.39	2.00	2.13	2.45	1.94
150	15	0.235	0.14	0.10	0.09	0.07	0.08	0.07	0.920	1.30	1.24	1.80	1.87	2.27	1.72
180	18	0.338	0.15	0.11	0.10	0.08	0.09	0.08	0.840	1.23	1.12	1.60	1.73	2.15	1.58
220	22	0.378	0.18	0.13	0.11	0.09	0.10	0.08	0.760	1.11	1.07	1.50	1.60	1.95	1.42
270	27	0.522	0.20	0.15	0.12	0.10	0.11	0.10	0.710	0.97	0.94	1.30	1.44	1.76	1.32
330	33	0.540	0.23	0.17	0.13	0.12	0.12	0.11	0.640	0.88	0.85	1.20	1.26	1.50	1.16
390	39	0.587	0.32	0.22	0.16	0.15	0.14	0.12	0.590	0.80	0.74	1.10	1.20	1.37	1.10
470	47	0.844	0.37	0.25	0.18	0.17	0.17	0.14	0.540	0.72	0.68	1.10	1.10	1.28	1.00
560	56	0.937	0.42	0.28	0.24	0.20	0.19	0.19	0.500	0.68	0.64	0.94	1.01	1.17	0.93
680	68	1.117	0.46	0.33	0.28	0.22	0.22	0.21	0.460	0.61	0.59	0.85	0.91	1.11	0.85
820	82	1.200	0.60	0.41	0.37	0.25	0.25	0.28	0.300	0.58	0.54	0.78	0.85	1.00	0.79
101	100	1.440	0.70	0.48	0.43	0.34	0.35	0.34	0.280	0.52	0.51	0.72	0.74	0.97	0.72
121	120	1.600	0.93	0.54	0.47	0.40	0.40	0.37	0.240	0.48	0.49	0.66	0.69	0.89	0.63
151	150	1.800	1.10	0.75	0.64	0.54	0.47	0.51	0.220	0.40	0.40	0.58	0.61	0.78	0.55
181	180	2.180	1.38	1.02	0.71	0.62	0.63	0.57	0.210	0.38	0.36	0.51	0.56	0.72	0.50
221	220	2.570	1.57	1.20	0.96	0.72	0.73	0.78	0.200	0.35	0.31	0.49	0.53	0.66	0.47
271	270	3.520	1.85	1.31	1.11	0.95	0.97	0.87	0.180	0.29	0.29	0.42	0.45	0.57	0.41
331	330	5.000	2.00	1.50	1.26	1.10	1.15	1.20	0.120	0.28	0.28	0.40	0.42	0.52	0.37
391	390	6.000	2.60	-	1.77	1.24	1.30	1.34	0.115	0.26	-	0.36	0.38	0.48	0.35
471	470	7.000	3.00	-	1.96	1.53	1.48	1.50	0.110	0.12	-	0.34	0.35	0.42	0.33
561	560	-	4.19	-	-	1.90	1.90	-	-	0.10	-	-	0.32	0.33	-
681	680	-	4.44	-	-	-	2.25	-	-	0.08	-	-	-	0.28	-
821	820	-	5.12	-	-	-	2.55	-	-	0.05	-	-	-	0.24	-
102	1000	-	10.00	-	-	-	-	-	-	0.03	-	-	-	-	-

测试频率: (L): 1.0 ~ 8.2 μH (7.96MHz), 10 ~ 82 μH (2.52MHz) 100 ~ 1000 μH (1kHz).

测试仪器: HP 4192A

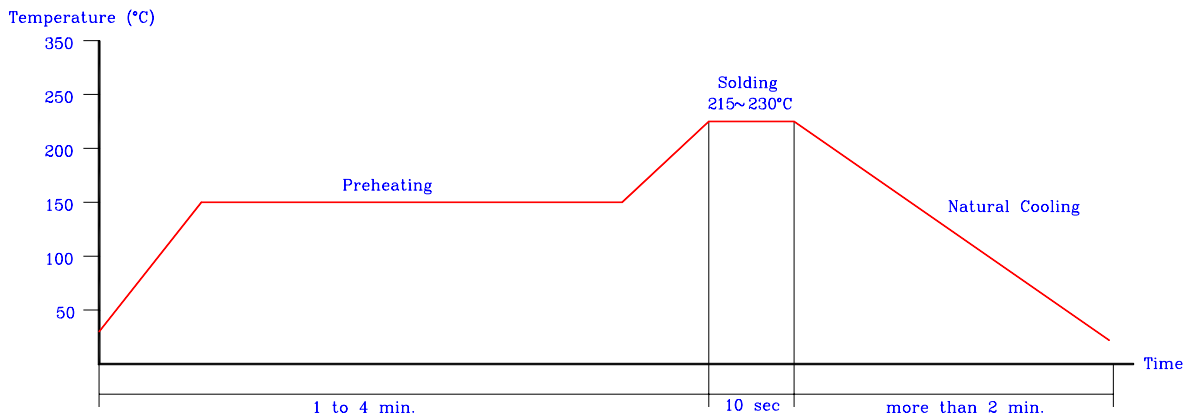
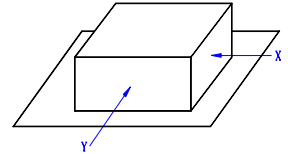
精度

PSCD0403	1.0 ~ 27 μH \pm 20%	33 ~ 68 μH \pm 10%	
PSCD0504	10 ~ 27 μH \pm 20%	33 ~ 47 μH \pm 15%	56 ~ 220 μH \pm 10%
PSCD0703	10 ~ 47 μH \pm 20%	56 ~ 330 μH \pm 10%	
PSCD0705	10 ~ 470 μH \pm 10%		
PSCD1004	10 ~ 47 μH \pm 20%	56 ~ 560 μH \pm 10%	
PSCD1005	10 ~ 39 μH \pm 20%	47 ~ 820 μH \pm 10%	
PSCDR1005B	10 ~ 27 μH \pm 20%	33 ~ 82 μH \pm 15%	100 ~ 470 μH \pm 10%

参数表

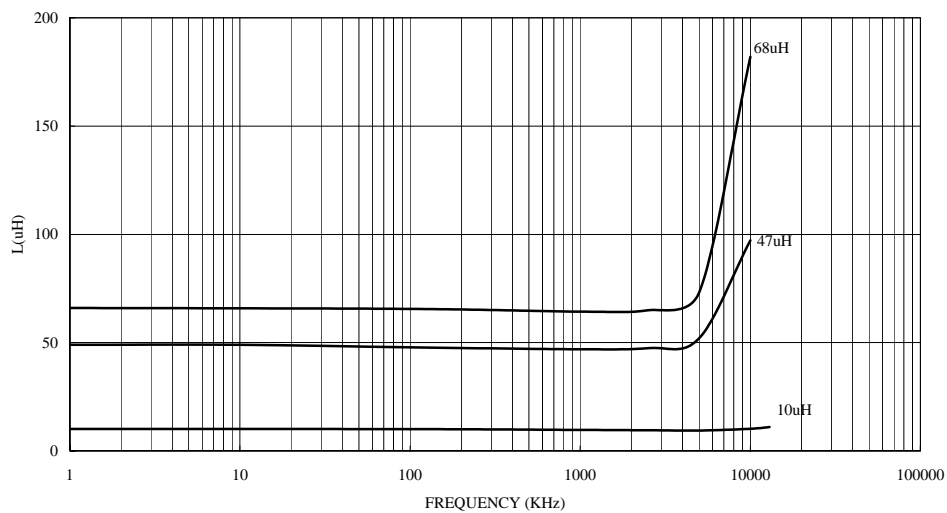
- **工作温度** : -30 ~ +100
- **外形检查** : 外部看不到有损失的地方
- **终端力度参数** : 焊接好之后, 在焊点和磁芯终端之间从 X, Y 两个方向施加力度
 终端不脱落.(参照右图)

10.0N	10sec.	SCD0403	SCD0504
15.0N	10sec.	SCD0703	SCD0705
20.0N	10sec.	SCD1004	SCD1005
- **回流焊时的耐热性参数** : 参见下图
- **绝缘电阻** : 在 100V 直流电压时线圈之间的阻值超过 100M
- **绝缘强度** : No dielectric breakdown at 100V D.C for 1 minute between wire and core.
- **温度特性** : 感应系数: $(0 \sim 2,000) \times 10^{-6} / (-25 \sim +80)$
- **湿度特性** : 电感量误差范围 $\pm 5.0\%$ (经 96 小时 90 ~ 95% 相对湿度, 温度 40 ± 2 和 1 小时正常烘干测试)
- **振动阻力** : 电感量误差为 $\pm 5.0\%$ (振动一小时测试条件)

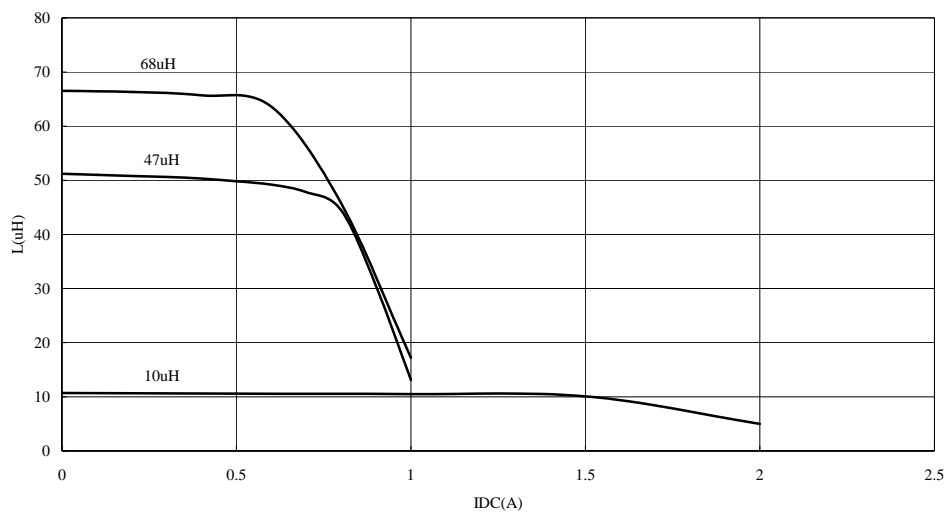


测试仪器：HP4291A 阻抗分析仪

INDUCTANCE vs. FREQUENCY CHARACTERISTICS

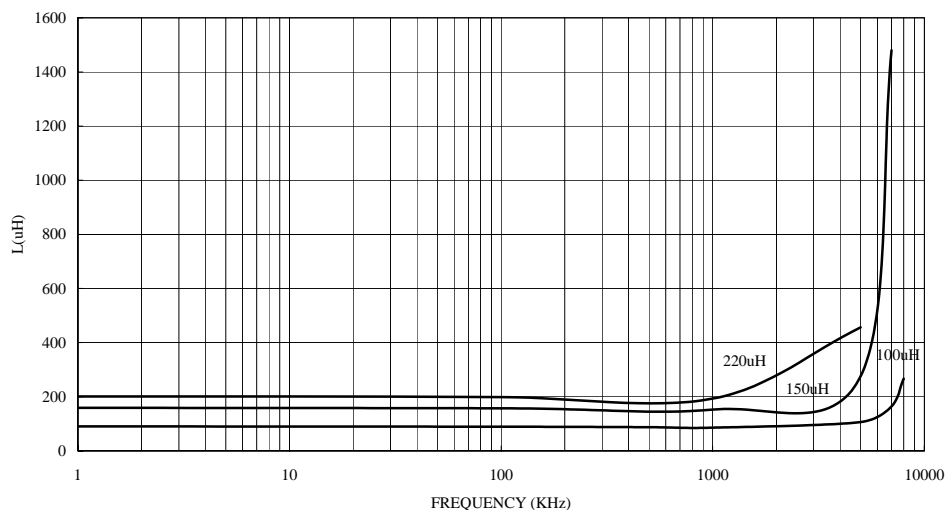


INDUCTANCE vs. IDC CHARACTERISTICS

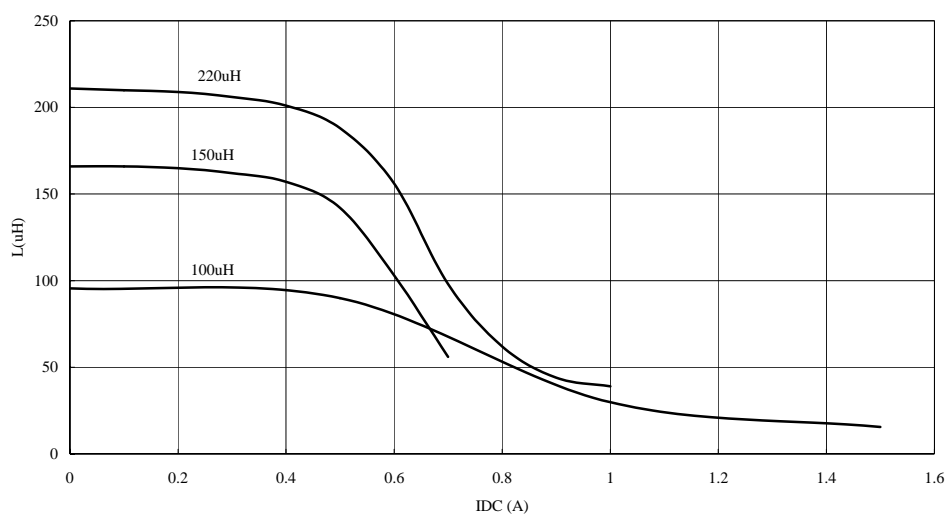


测试仪器：HP4291A 阻抗分析仪

INDUCTANCE vs. FREQUENCY CHARACTERISTICS

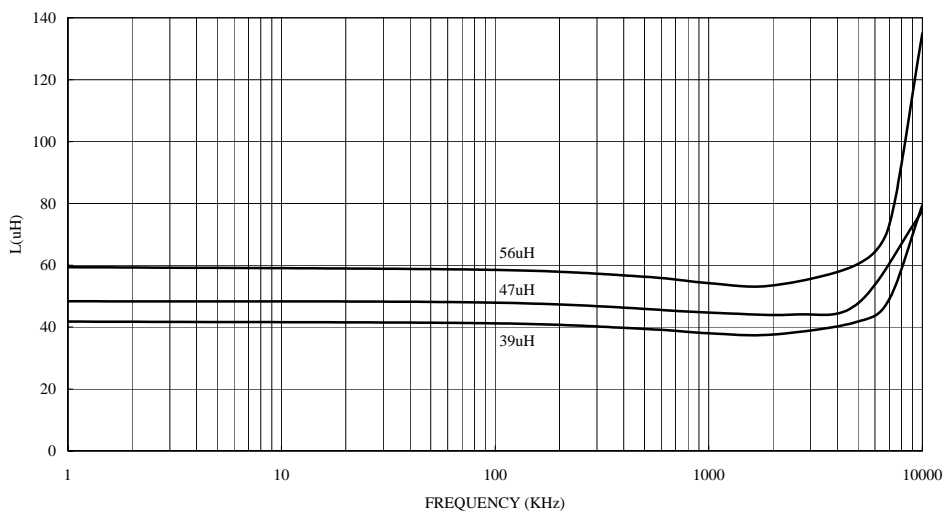


INDUCTANCE vs. IDC CHARACTERISTICS

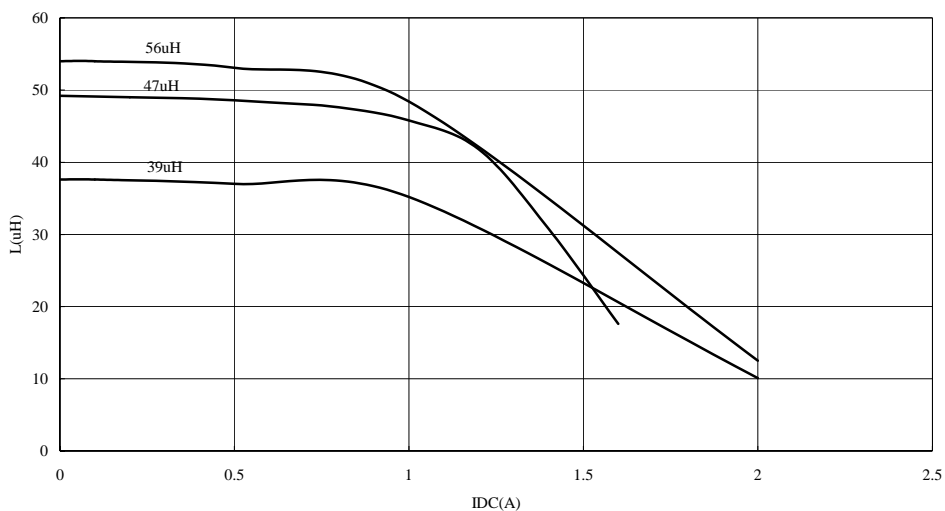


测试仪器：HP4291A 阻抗分析仪

INDUCTANCE vs. FREQUENCY CHARACTERISTICS

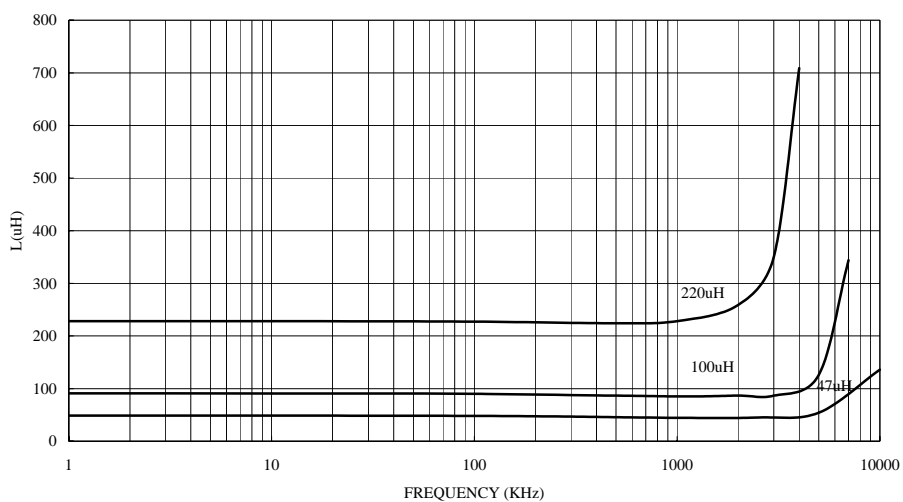


INDUCTANCE vs. IDC CHARACTERISTICS

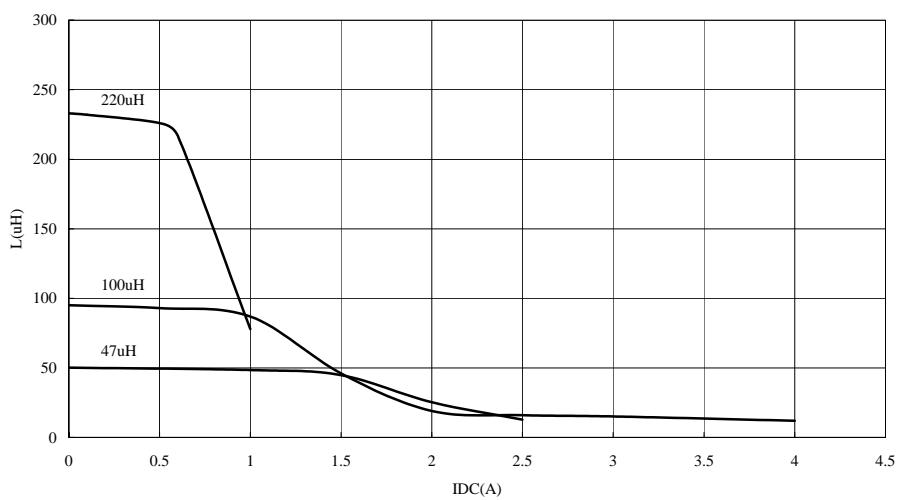


测试仪器：HP4291A 阻抗分析仪

INDUCTANCE vs. FREQUENCY CHARACTERISTICS

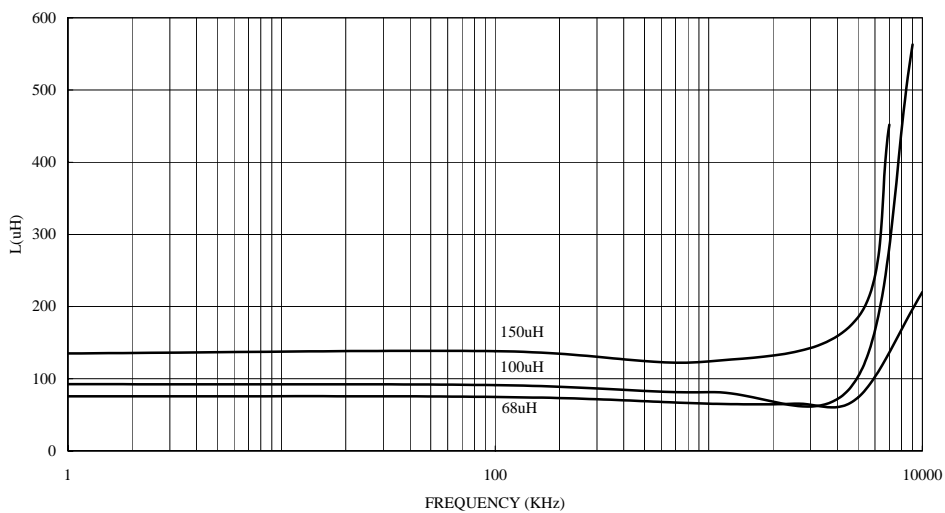


INDUCTANCE vs. IDC CHARACTERISTICS

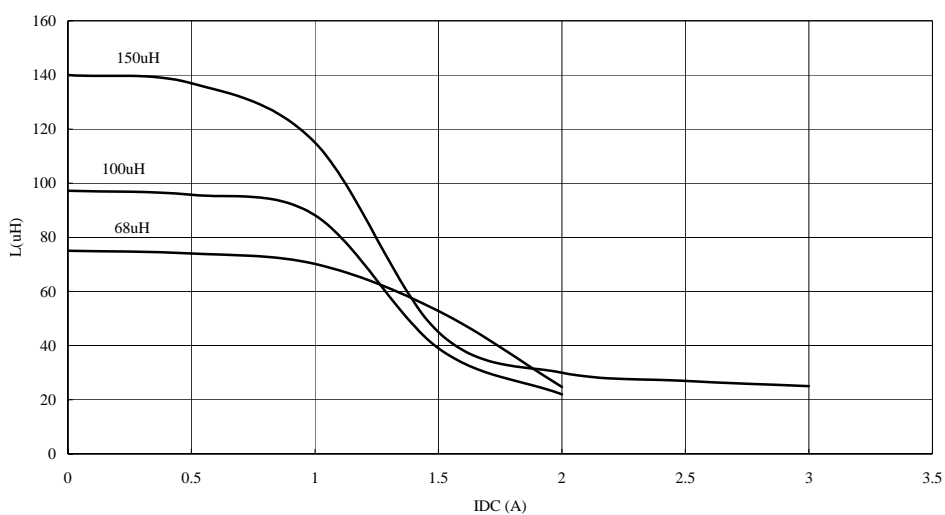


测试仪器：HP4291A 阻抗分析仪

INDUCTANCE vs. FREQUENCY CHARACTERISTICS

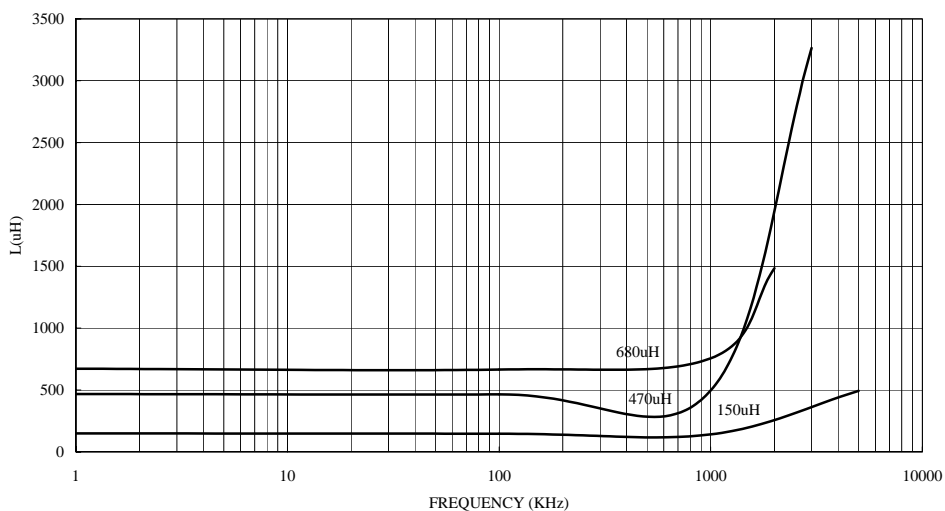


INDUCTANCE vs. IDC CHARACTERISTICS

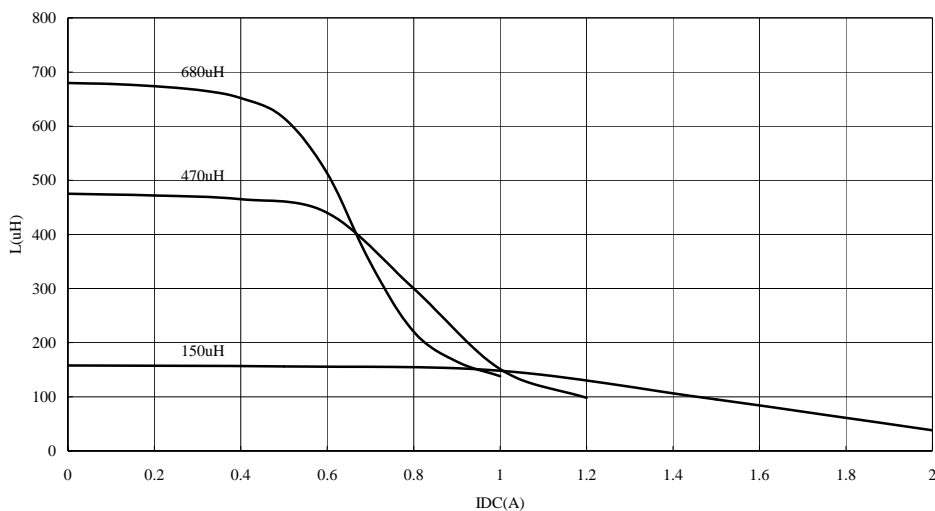


测试仪器：HP4291A 阻抗分析仪

INDUCTANCE vs. FREQUENCY CHARACTERISTICS

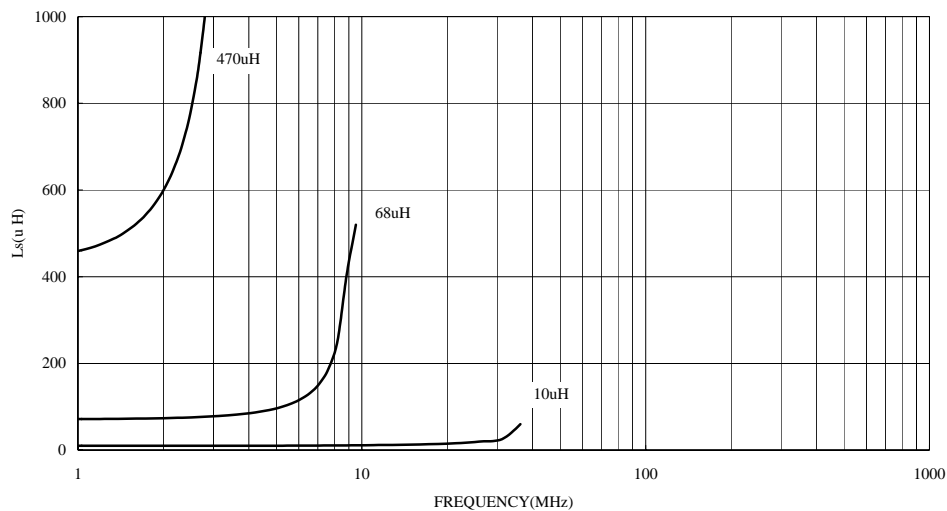


INDUCTANCE vs. IDC CHARACTERISTICS

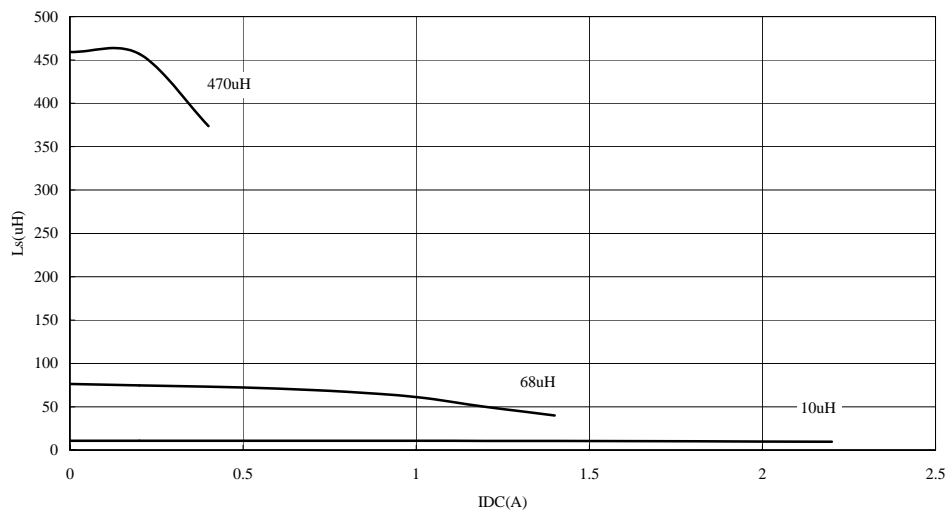


测试仪器：HP4291A 阻抗分析仪

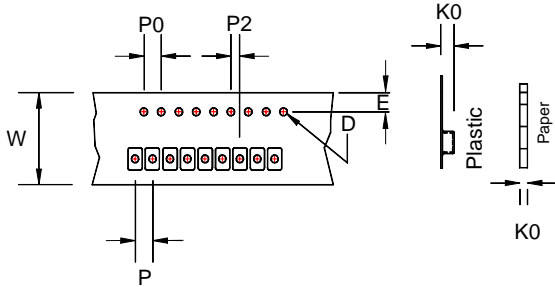
INDUCTANCE vs. FREQUENCY CHARACTERISTICS



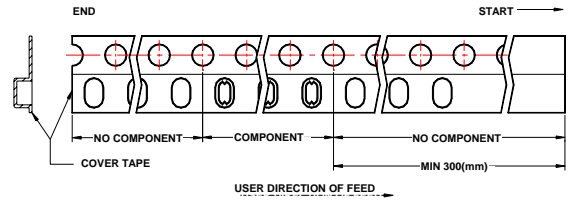
INDUCTANCE vs. IDC CHARACTERISTICS



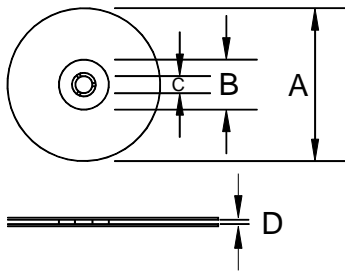
卷装尺寸



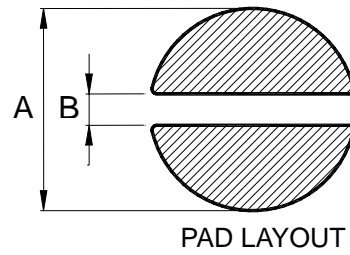
卷装材料



盘装尺寸



包装外形



尺寸：mm

类型	卷装尺寸							推荐模式		盘装尺寸				数量
	K0	D	E	W	P	P0	P2	A	B	A	B	C	D	PCS / REEL
PSCD0403	3.6	1.55	1.75	12	8	4	2	5.5	1.2	330	100	13	13.4	2000
PSCD0504	5	1.55	1.75	16	12	4	2	6.8	1.3	330	100	13	17.4	1000
PSCD0703	3.8	1.55	1.75	16	12	4	2	8.8	2.1	330	100	13	17.4	1000
PSCD0705	5.5	1.55	1.75	16	12	4	2	8.8	2.1	330	100	13	17.4	700
PSCD1004	5.8	1.55	1.75	24	12	4	2	11	2.1	330	100	13	24.4	700
PSCD1005	5.8	1.55	1.75	24	12	4	2	11	2.1	330	100	13	24.4	700
PSCDR1005B	5.8	1.55	1.75	24	12	4	2	10	2.5	330	100	13	24.4	700