

VOLTAGE CONTROLLED OSCILLATOR

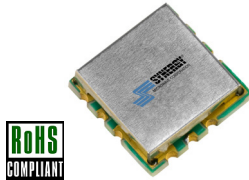
SURFACE MOUNT MODEL: DCO400660-5

OPTIMIZED BANDWIDTH

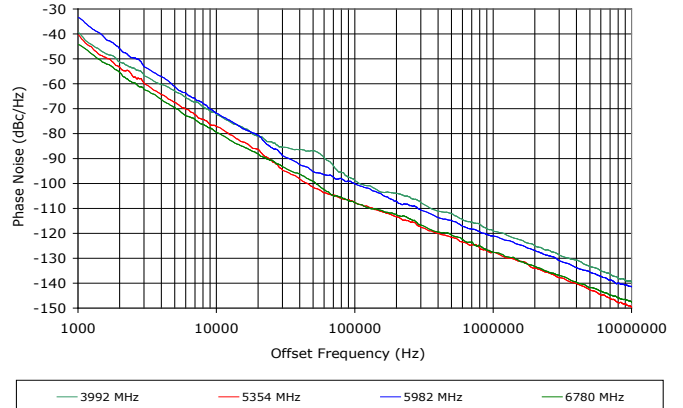
4000 - 6600 MHz

FEATURES:

- ▶ Miniature Size, Surface Mount (0.3" x 0.3")
- ▶ Exceptional Phase Noise Performance
- ▶ Fast Tuning
- ▶ Planar Resonator Construction



Phase Noise



SPECIFICATIONS (Rev. C 01/09/14)

Frequency	4000 - 6600 MHz	
Tuning Voltage	See table below.	
Bias Voltage	+5 VDC @ 35 mA (Max.)	
Output Power	0 dBm (Min.)	
Tuning Sensitivity	135 - 700 MHz/V (Typ.)	
Output Impedance	50 Ohms (Nom.)	
Harmonic Suppression	-15 dB (Typ.)	
Frequency Pulling	25 MHz (Typ. @ 1.75:1 VSWR)	
Frequency Pushing	10 MHz/V (Typ.)	
Tuning Port Capacitance	60 pF (Typ.)	
Typical Phase Noise	Offset	dBc/Hz
	10 kHz	-75
	100 kHz	-103
Operating Temperature Range	-40 to +85 °C	

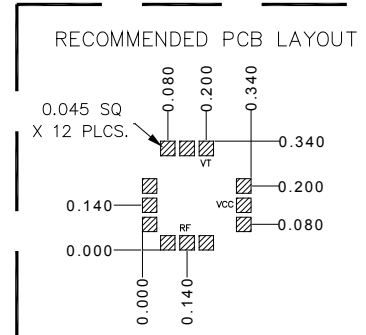
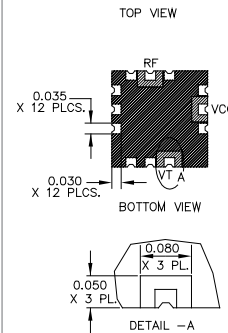
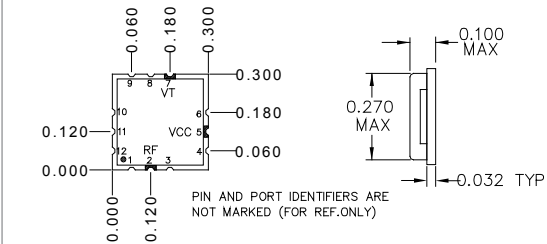
Guaranteed Tuning Specifications

Tuning Voltage (V)	Frequency (MHz)
0.5	4000 (Max.)
5	5100 (Min.)
8	6000 (Min.)
11	6600 (Min.)

Absolute Maximum Ratings

Storage Temp. Range	-55 to +125 °C
Bias Voltage	+5.5 V
Tuning Voltage	+18 V
DC Voltage Applied to RF Out	±25 V

Package # 343



PACKAGE MOUNTING: SEE APPLICATION NOTE AN7300 & AN7302

TOLERANCES ON THREE DECIMAL PLACES = ± 0.015

DIMENSIONS ARE IN INCHES. ALL UNLABELED PINS TO BE GROUNDED.

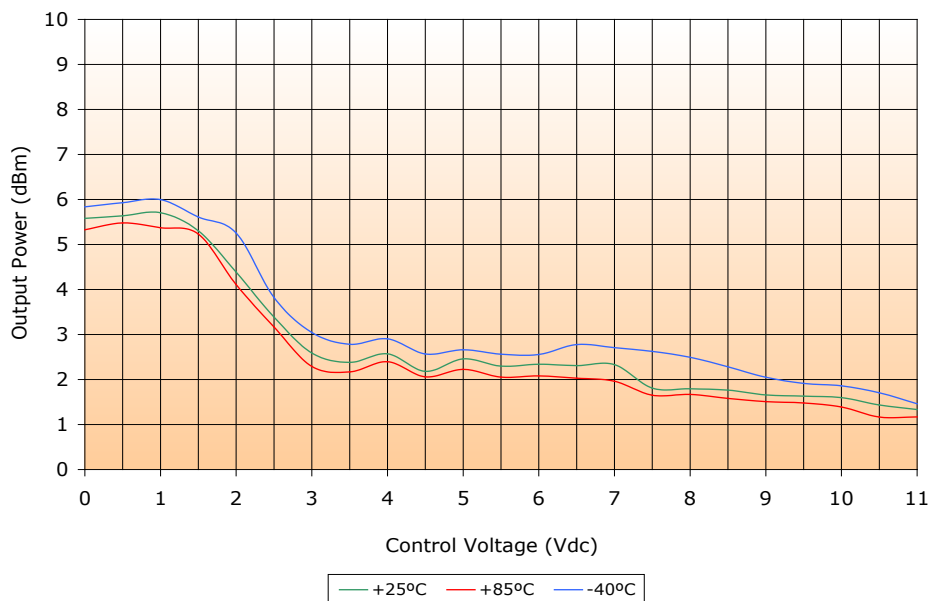
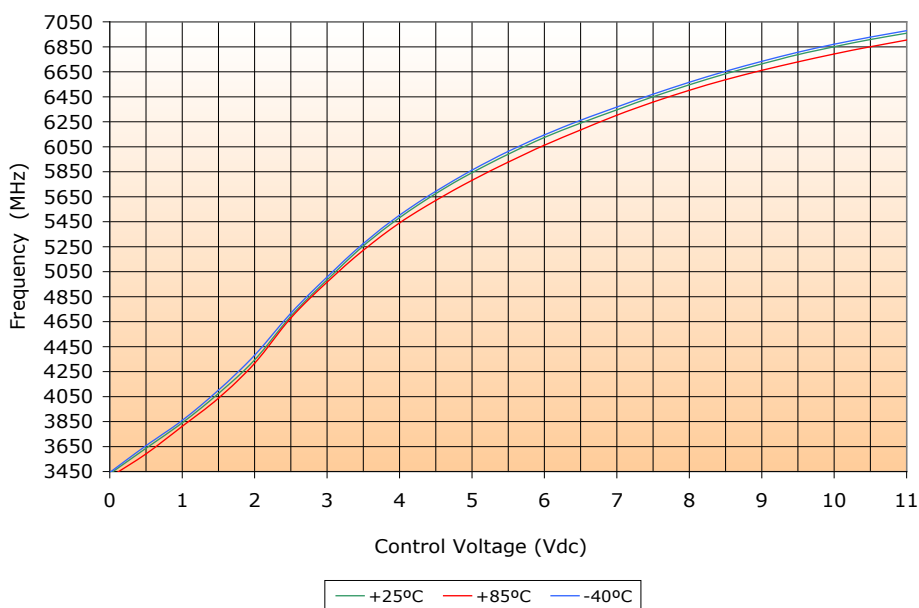
VOLTAGE CONTROLLED OSCILLATOR

SURFACE MOUNT MODEL: DCO400660-5

OPTIMIZED BANDWIDTH

4000 - 6600 MHz

PERFORMANCE PLOTS



VOLTAGE CONTROLLED OSCILLATOR

SURFACE MOUNT MODEL: DCO400660-5

OPTIMIZED BANDWIDTH

4000 - 6600 MHz

PERFORMANCE PLOTS

