

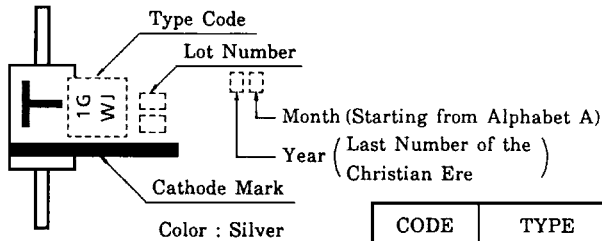
○ HIGH SPEED RECTIFIER APPLICATIONS.

- Average Forward Current : $I_F(AV) = 1.0A$ ($T_a = 52^\circ C$)
- Reverse Recovery Time : $t_{rr} = 35ns$ (MAX.)
- Low Forward Voltage : $V_{FM} = 0.55V$ (MAX.)

MAXIMUM RATING

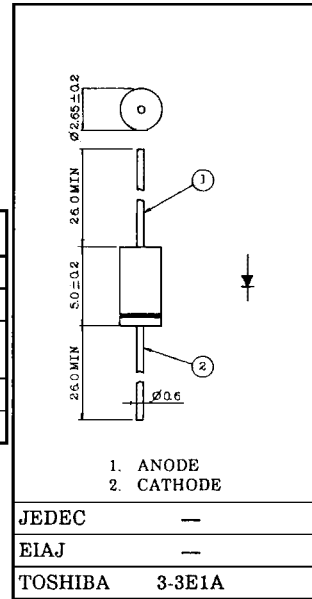
CHARACTERISTIC	SYMBOL	RATING	UNIT
Repetitive Peak Reverse Voltage	V_{RRM}	40	V
Average Forward Current	$I_F(AV)$	1.0	A
Peak One Cycle Surge Forward Current (Non Repetitive)	I_{FSM}	40 (50Hz)	A
Junction Temperature	T_j	-40~125	°C
Storage Temperature Range	T_{stg}	-40~125	°C

MARKING



CODE	TYPE
1GWJ	1GWJ42

Unit in mm

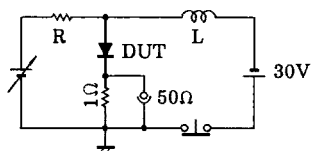


Weight : 0.225g

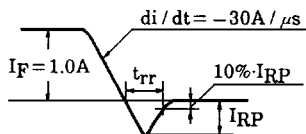
ELECTRICAL CHARACTERISTICS (Ta = 25°C)

CHARACTERISTIC	SYMBOL	TEST CONDITION	MIN.	TYP.	MAX.	UNIT
Peak Forward Voltage	V _{FM}	I _{FM} = 1.0A	—	—	0.55	V
Repetitive Peak Reverse Current	I _{RRM}	V _{RRM} = 40V	—	—	0.5	mA
Reverse Recovery time (Note 1)	t _{rr}	I _F = 1.0A, di / dt = -30A / μs	—	—	35	ns
Junction Capacitance	C _j	V _R = 10V, f = 1MHz	—	52	—	pF
Thermal Resistance (Junction to Ambient)	R _{th(j-a)}	DC (Note 2)	—	—	125	°C / W
Thermal Resistance (Junction to Lead)	R _{th(j-1)}	DC (Note 2)	—	—	60	°C / W

Note 1 : t_{rr} TEST CIRCUIT



t_{rr} WAVEFORM



Note 2 : THERMAL RESISTANCE

