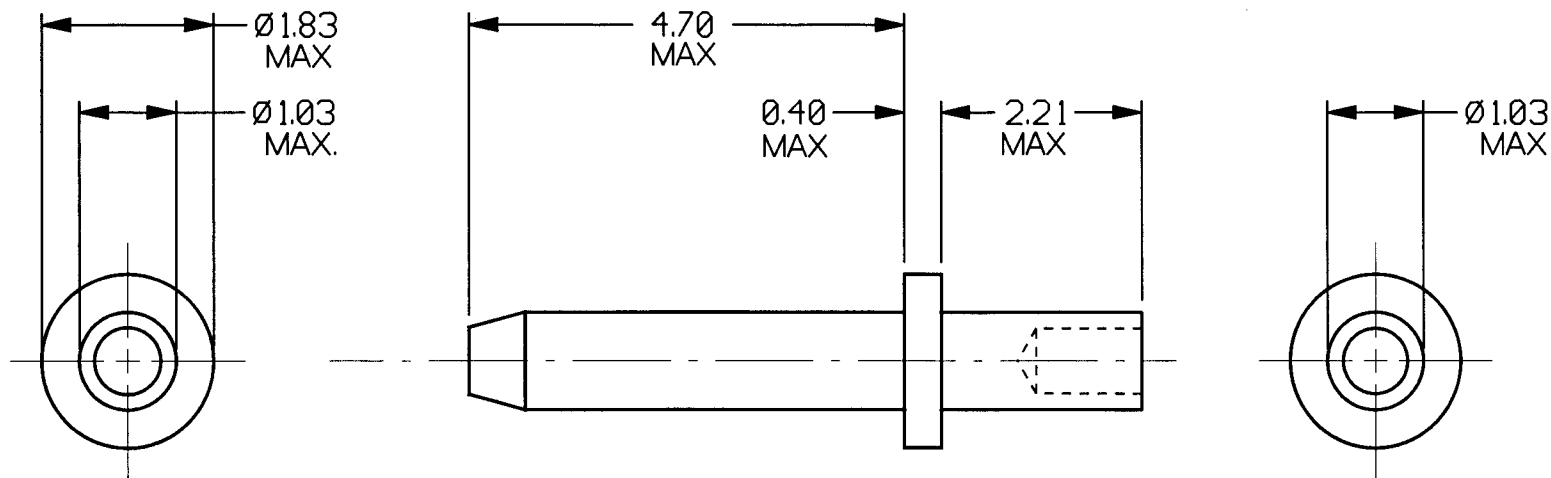


CUSTOMER INFORMATION  
SHEET

## NOTE:

## 1. PLATING FINISHES AVAILABLE:

 $\varnothing 1$  = TIN $\varnothing 5$  = GOLD2. RECOMMENDED MOUNTING HOLE:  $\varnothing 1.04/\varnothing 1.14$ 

## 3. RECOMMENDED PANEL THICKNESS: 1.6mm

## 4. FOR SWAGING TOOL CHANGE PART No.

TO PREFIX 'Z' AND SUFFIX '00'

(EXAMPLE Z2175-00)

1 6.1.95

ISS. DATE C/N

DRAWN: ISANDY

CHECKED: *[Signature]*APPD.: *[Signature]*

CUSTOMER REF.

ASSEMBLY DRG:

**HARWIN**

## TOLERANCES

X.	$\pm 1$ mm
X.X	$\pm 0.25$ mm
X.XX	$\pm 0.10$ mm
X.XXX	$\pm 0.01$ mm
ANGLES	$\pm 1^\circ$

MATERIAL:  
BRASS

## TITLE:

TERMINAL PIN

HARWIN PLC  
U.K.TEL: (01705) 370451  
FAX: (01705) 324010HARWIN INC  
U.S.A.TEL: (812) 285-0055  
FAX: (812) 285-0056HARWIN PTE  
SINGAPORETEL: 7794909  
FAX: 7793868

IF IN DOUBT - ASK

FINISH: SEE NOTE 1

S/AREA:

mm<sup>2</sup>

DRAWING NUMBER:

H2175-XX

SHT.  
2 OF 2