



**PE7088-15**

15 dB Fixed Attenuator, 2.92mm Male To 2.92mm Female  
Stainless Steel Body Rated To 1 Watt Up To 40 GHz

**40 GHz 2.92mm Attenuator**

The Pasternack PE7088 attenuator series is designed with stainless steel 2.92mm connectors for excellent performance to 40 GHz and 1 Watt. This high frequency attenuator family has a stainless steel round body construction with 9/32 flats for improved anti-torque installation and removal in a system. The high performance 40 GHz attenuator line is available in 1 dB steps from 0 dB to 10 dB for accurate system power leveling. 12 dB, 15 dB, 20 dB and 30 dB attenuators are available for millimeter wave applications.

**Configuration**

Connector 1	2.92mm Male
Connector 2	2.92mm Female
Frequency Range (GHz)	DC to 40
Body Material and Plating	Stainless Steel, Passivated
Design	Fixed

**Electrical Specifications**

Frequency Range (GHz)	DC to 40
Impedance (Ohms)	50
Power, Max Input (Watt)	1
Standard Attenuation Values (dB)	15
VSWR Max Input	1.4:1

**Frequency 1**

Range (GHz)	DC to 18
Attenuation Accuracy (GHz)	0.6
VSWR	1.3:1

**Frequency 2**

Range (GHz)	18 to 26.5
Attenuation Accuracy (±dB)	0.5
VSWR	1.4:1

**Frequency 3**

Range (GHz)	26.5 to 40
Attenuation Accuracy (±dB)	1
VSWR	1.4:1

Click the following link for the additional product information:

[15 dB Fixed Attenuator, 2.92mm Male To 2.92mm Female Stainless Steel Body Rated To 1 Watt Up To 40 GHz PE7088-15](#)

Version C - Revision - © 2011 Pasternack Enterprises All Rights Reserved.



15 dB Fixed Attenuator, 2.92mm Male To 2.92mm Female  
Stainless Steel Body Rated To 1 Watt Up To 40 GHz

**PE7088-15**

**Mechanical Specifications**

Temperature Operating Range (deg C) -55 to +125  
Body Material and Plating Stainless Steel, Passivated

**Connector 1**

Type 2.92mm  
Gender Male  
Body Material and Plating Stainless Steel, Passivated  
Inner Conductor Material and Plating BeCu, Gold  
Outer Conductor Material and Plating Stainless Steel, Passivated  
Coupling Nut Material and Plating Stainless Steel, Passivated

**Connector 2**

Type 2.92mm  
Gender Female  
Body Material and Plating Stainless Steel, Passivated  
Inner Conductor Material and Plating BeCu, Gold  
Outer Conductor Material and Plating Stainless Steel, Passivated  
Coupling Nut Material and Plating Stainless Steel, Passivated

**Compliance Certifications** (visit [www.Pasternack.com](http://www.Pasternack.com) for current document)

RoHS Compliant Yes, by exemption

**Other Data**

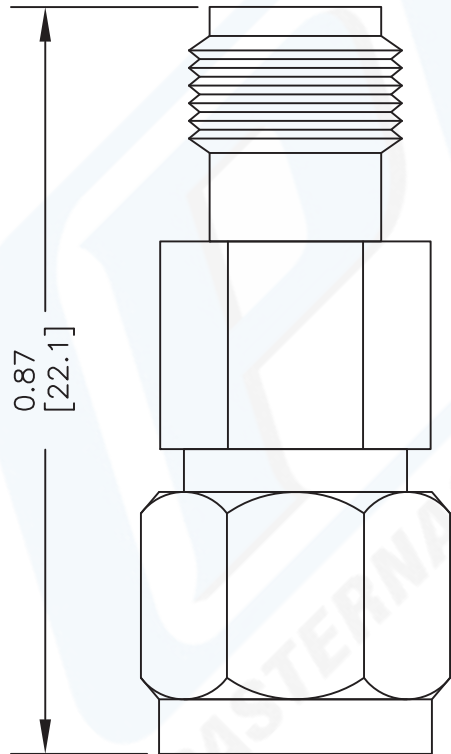
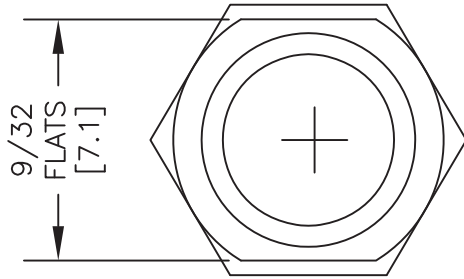
URL: <http://www.pasternack.com/15db-fixed-2.92mm-male-2.92mm-female-1-watt-attenuator-pe7088-15-p.aspx>

15 dB Fixed Attenuator, 2.92mm Male To 2.92mm Female Stainless Steel Body Rated To 1 Watt Up To 40 GHz from Pasternack Enterprises has same day shipment for domestic and International orders. Our RF, microwave and fiber optic products maintain a 99% availability and are part of the broadest selection in the industry.

Version C - Revision - © 2011 Pasternack Enterprises All Rights Reserved.

# PE7088-15 CAD Drawing

15 dB Fixed Attenuator, 2.92mm Male To 2.92mm Female Stainless Steel Body Rated To 1 Watt Up To 40 GHz



2.92mm  
FEMALE

2.92mm  
MALE

NOTES:  
 1. UNLESS OTHERWISE SPECIFIED ALL DIMENSIONS ARE NOMINAL.  
 2. ALL SPECIFICATIONS ARE SUBJECT TO CHANGE WITHOUT NOTICE AT ANY TIME.  
 3. DIMENSIONS ARE IN INCHES [mm].

DWG TITLE

**PE7088**

REV. -

FSCM NO. 53919

CAD FILE 061512

SCALE N/A

SIZE A

2233

**PASTERNAK ENTERPRISES, INC.**

P.O. BOX 16759, IRVINE, CA 92623  
 PHONE (949) 261-1920 FAX (949) 261-7451

WEB ADDRESS: [www.pasternack.com](http://www.pasternack.com)  
 E-MAIL ADDRESS: [sales@pasternack.com](mailto:sales@pasternack.com)

**COAXIAL & FIBER OPTICS**

