

SPECIFICATIONS

DIMM Connector

Mechanical

Contact Retention Force: 0.75Lbs (0.34kg) min.
Durability: 25 Cycles
Vibration: Pass MIL-STD-1344A, method 2005 condition

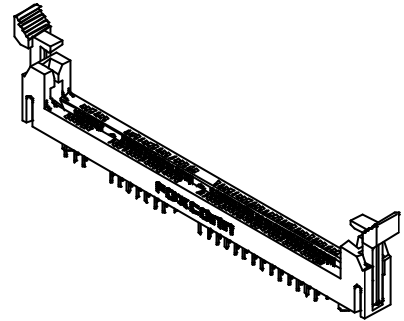
Electrical

Voltage Rating: 250V
Current Rating: 1.0A max.
Dielectric Withstanding Voltage: 500V
Insulation Resistance: 1000MW min.
Low Level Contact Resistance (Dry Circuit): 30mW max. initial

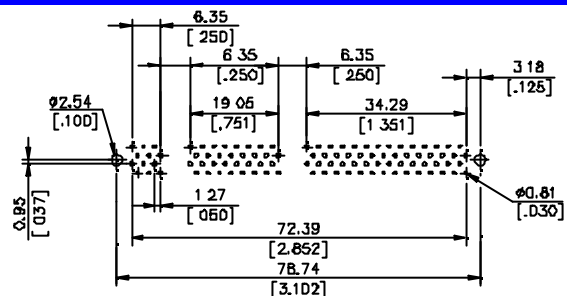
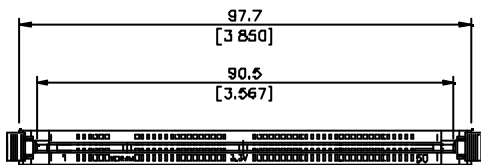
Physical

Housing: Thermoplastic, UL 94V-0 rated in Black Color
Ejector Lever: Thermoplastic, UL 94V-0 rated in Ivory Color
Contact: Copper alloy
Operating Temperature: 0 to +85

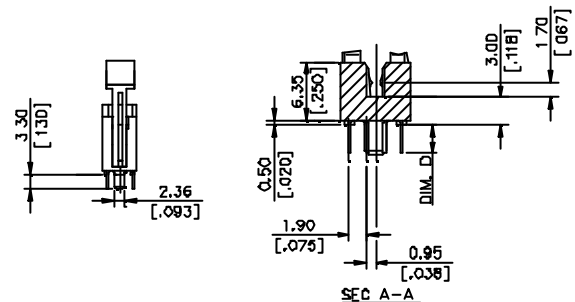
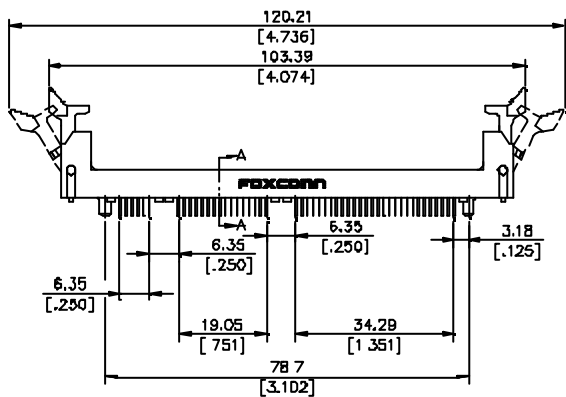
AT050 Series
Vertical, T/H Type
1.27mm [.050"] Pitch
100 Pos.



DRAWING

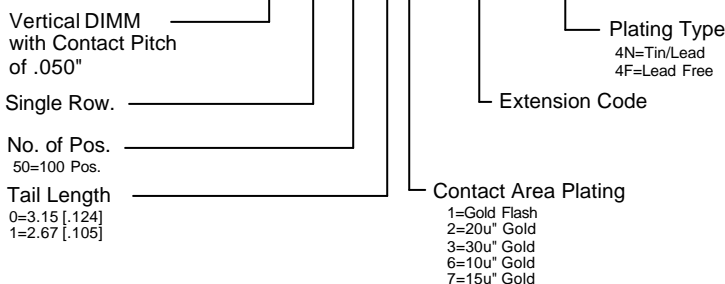


RECOMMENDED P.C.B LAYOUT



ORDERING INFORMATION

PRODUCT NO.: A T 0 5 0 * * - * * * - * *



AT050D*-P5-4F	100	3.3 V	3.15 [.124]
AT050I*-P5-4F		3.3 V	2.67 [.105]
P/N	POS	VOLTAGE MARKING	DIM D