

TIN LEAD PART NUMBER

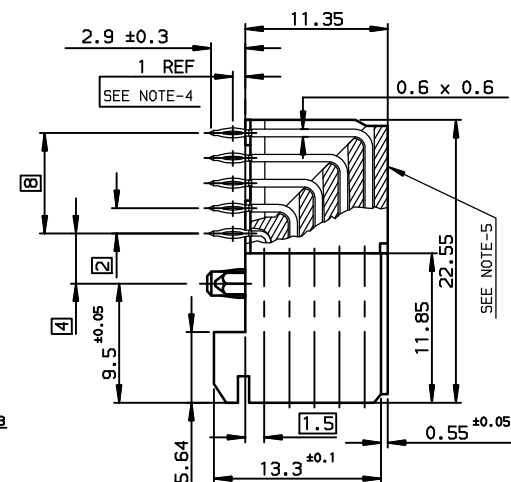
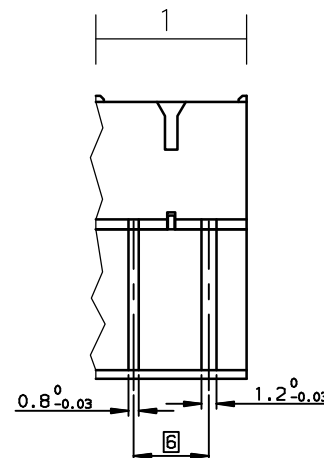
Part Number: HM1F59FDP237H6P

LEAD FREE PART NUMBER

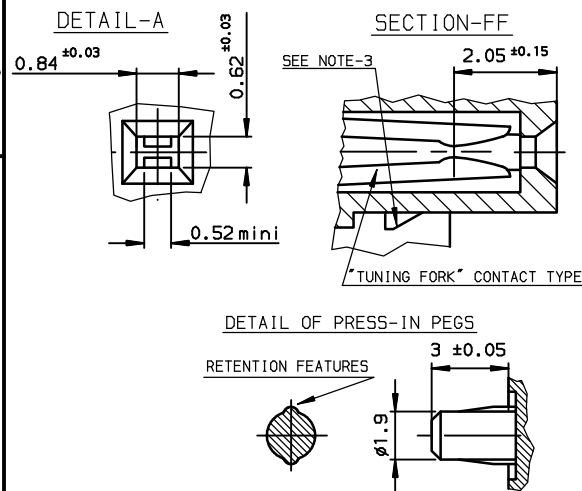
Part Number: HM1F59FDP237H6PLF

PERFORMANCE LEVEL = PL1 OF IEC-48B/424/CDV SPECIFICATION

CONTACT LOADING LOCATION SEE C-8626-0824-2



Copyright FCI.


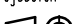




(REDUCED SCALE SHEET)

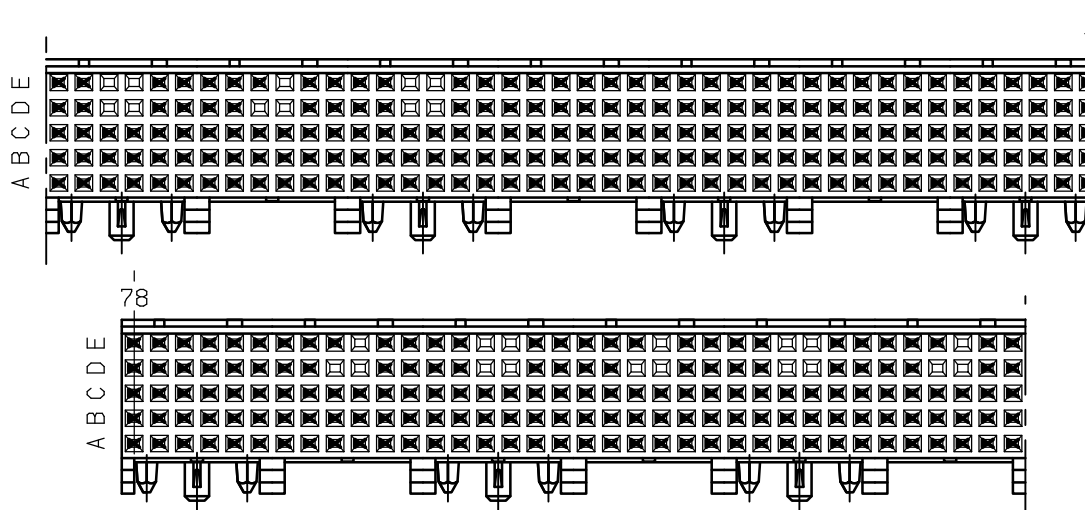
rev	ecn no	dr	date
B	-	-	1997/05/22
C	LS05-004	MLE	2005/02/18
D	LS06-0097	LGO	2006/07/24
-	-	-	-
-	-	-	-
-	-	-	-
-	-	-	-

GENERAL CHARACTERISTICS AND ROHS INFORMATIONS:

SEE DRAWING C-8626-000P

www.fciconnect.com			surface ISO 1302 		tolerance std ISO 406 ISO 1101		projection 		mm 	
TOLERANCES UNLESS OTHERWISE SPECIFIED										
Dr	ETIEMBRE	1997/04/04	ANGULAR	LINEAR	0.X	±0.1	size A3	Scale 2.5		
Eng	LENOIR	1997/04/04			0.XX	±0.1		ECN LS06-0097		
Chr	LEGARE	1997/04/04			0.XX' ±2'	±0.1				
Appr	LEGARE	1997/04/04	Product family METRAL				Spec ref -			
			MILLIPACS-1 FEMALE 5 ROW-362 WAYS RIGHT ANGLE PRESS-FIT				C-8626-0824-1			Rev. D
catalog no			-				CUSTOMER		sheet 1 of 1	

CONTACT LOADING LOCATION



EMPTY CAVITIES

- A :
- B :
- C :
- D : 27/28/33/34/39/40/45/46/51/52/57/58/63/64/69/70
- E : 27/28/33/39/40/45/51/52/57/63/64/69

GENERAL CHARACTERISTICS AND ROHS INFORMATIONS:

SEE DRAWING C-8626-000P

European Views

rev	ecn no	dr	date
A	-	MAS	1997/04/04
C	LS05-004	MLE	2005/02/18
D	LS06-0097	LGO	2006/07/24
-	-	-	-
-	-	-	-
-	-	-	-
-	-	-	-

www.fciconnect.com		surface ISO 1302	tolerance std ISO 406 ISO 1101	projection mm		
		TOLERANCES UNLESS OTHERWISE SPECIFIED				
Dr	ETIEMBRE	1997/04/04	ANGULAR		size	Scale
Eng	LENOIR	1997/04/04	LINEAR		A3	2.5
Chr	LEGARE	1997/04/04	0.xx' ±2'	0.X ±0.1		
Appr	LEGARE	1997/04/04	0.xxx ±0.1	0.XXX ±0.1	ECN	LS06-0097
		Product family		METRAL	Spec ref	-
		title		2		
		MILLIPACS-1 FEMALE 5 ROW-362 WAYS		dwg	C-8626-0824-2	
		RIGHT ANGLE PRESS-FIT			Rev. D	
		catalog no		-	CUSTOMER sheet 1 of 1	

REV F - 2006-04-17

PDM: Rev:D

STATUS:Released

Printed: Aug 27, 2006