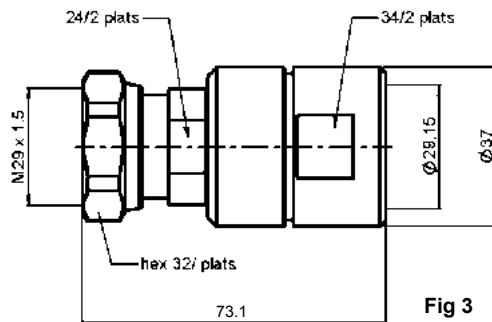
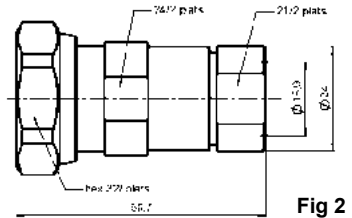
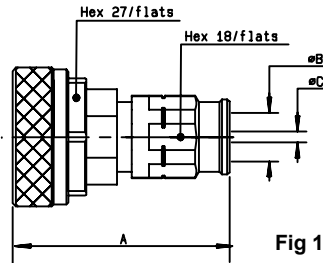
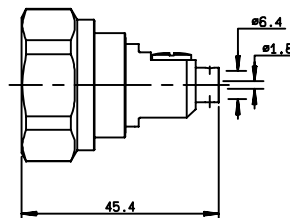


STRAIGHT PLUGS EZ FIT TYPE FOR CORRUGATED CABLES



cable	part number	fig.	dimension			capt. center cont.	assembly	finish
			A	B	C			
1/4" superflexible corrugated	R185 030 200	1	47	7.95	4.7	yes	M02	Silver+BBR
1/2" superflexible corrugated	R185 031 200	1	49	14	8.8	yes	M02	
3/8" superflexible corrugated	R185 032 200	1	49	11	7.1	yes	M02	
1/2" flexible corrugated	R185 031 020W	2	-	-	-	yes	M07	
7/8" flexible corrugated	R185 033 020W	3	-	-	-	yes	M08	

STRAIGHT PLUG SOLDER TYPE FOR SEMI RIGID CABLES



cable	part number	capt. center cont.	assembly	finish
.250"	R185 054 020	yes	M12	Copper + silver

Note : standard packaging = 20 pieces. For unit packaging, add "W" after the P/N.