

FUSED FIBER COUPLERS

SINGLE WINDOW BROADBAND 1xN COUPLER

DiCon's Single Window Broadband 1xN Couplers are designed for splitting power signals in the 1550 nm or 1310 nm windows. DiCon's Single Window Broadband 1xN Couplers have excellent uniformity, low excess loss, and low PDL.



FEATURES

- Low insertion loss
- Low PDL
- Low wavelength dependence loss
- Tested to Telecordia GR-1221 (bare fiber version)

APPLICATIONS

DiCon's Single Window Broadband 1xN Couplers are designed for use in telecommunication equipment, CATV networks, and test equipment.



FUSED FIBER COUPLERS

SPECIFICATIONS¹

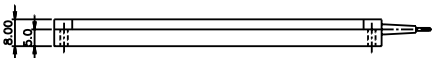
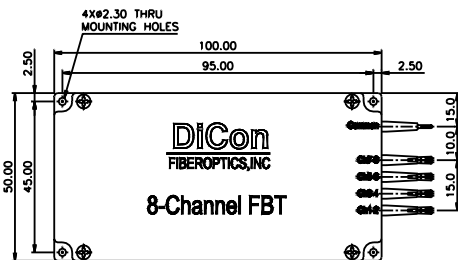
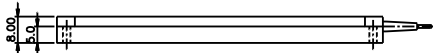
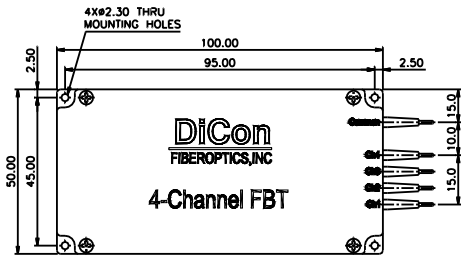
Directivity	50 dB min.
Back-reflection	-50 dB max.
Fiber type	9/125 Corning SMF-28
Operating temperature	-40°C to + 70°C
Storage temperature	-40°C to + 85°C

1. All specifications referenced without connectors.

COUPLING RATIO TABLE

	Insertion loss		Uniformity		PDL	
	Premium	Standard	Premium	Standard	Premium	Standard
1x4	6.8	7.2	1.2	1.7	0.15	0.2
1x8	10.2	10.8	1.8	2.5	0.2	0.3
1x16	13.5	15.1	2.4	2.5	0.3	0.4
1x32	17.5	18.5	3.0	3.5	0.4	0.5

HOUSING DIMENSIONS



Units: mm

ORDERING INFORMATION

