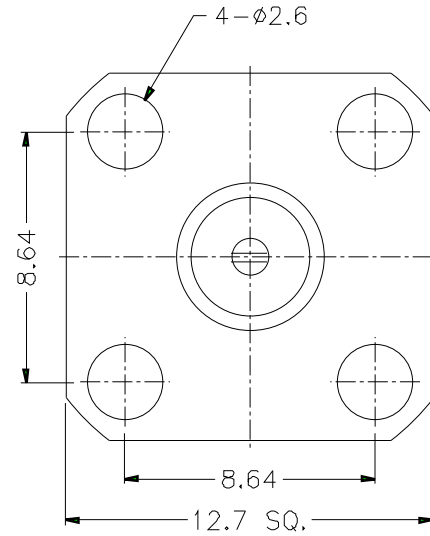
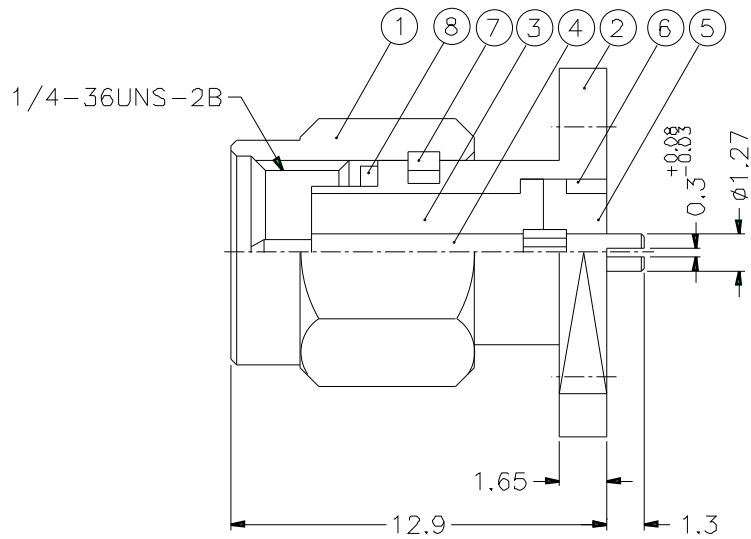


1			2			3			4			5			6			7			8		
REVISIONS																							
ISS	ZONE	DESCRIPTION\PER REQUEST\DATE																					



NOTES. FINISH (PLATING THICKNESS IN MICRO-INCHES)

1. BRASS PER QQ-B-626
2. STAINLESS STEEL PER QQ-S-764, TYPE 303
3. PASSIVATED PER QQ-P-35
4. BERYLLIUM COPPER PER QQ-C-530
5. GOLD PL. 50 MIN. THICK OVER NICKEL PL. 100 MIN. THICK OVER COPPER STRIKE
6. TEFLON MIL-P-1946B

8	GASKET	SILICONE	RED	1	GS-6/43X06
7	RETAINER RING	NOTE 4	NATURAL	1	SMA5000-4-B
6	RING	NOTE 2	NOTE 3	1	SMA7530-5-B
5	INSULATOR	NOTE 6	NATURAL	1	SMA7530-4T-50
4	CONTACT PIN	NOTE 1	NOTE 5	1	SMA5540-4-0.35
3	INSULATOR	NOTE 6	NATURAL	1	SMA5530-3T-50-B
2	BODY	NOTE 2	NOTE 3	1	SMA5530-2-A
1	SHELL	NOTE 2	NOTE 3	1	SMA5000-1-C
NO.	DESCRIPTION	MATERIAL	FINISH	Q'TY	DRAWING NO.

DIMENSIONS ARE IN MILLIMETERS
 UNLESS OTHERWISE SPECIFIED
 TOLERANCES
 0.5-6 = ±0.2
 6-30 = ±0.4
 30-120 = ±0.6
 120-315 = ±1
 315-1000 = ±1.6
 1000-2000 = ±2.4

PART NO.		SMA1551C1-S/PT50G-0.3-50	
APPROVED	DATE		
CHECKED	DATE		
DRAWN	DATE		
FILE NO	4/1	ISSUE	A

Amphenol	
TITLE SMA PANEL RECEPT. PLUG	
DRAWING NO. KJ-SMA1551C1-S/PT50G-0.3-50	
ITEM NO.	

1			2			3			4			5			6			7			8		
---	--	--	---	--	--	---	--	--	---	--	--	---	--	--	---	--	--	---	--	--	---	--	--