

NOTES:

- 1 CATALOG No. AND 4 DIGIT DATE CODE & MANUFACTURING LOCATION LOCATED APPROXIMATELY AS SHOWN.
- 2 SEE DRAWING 27367 FOR PLATED THRU HOLE REQUIREMENTS.
- 3 COVER TO BE USED FOR ONE CONNECTOR INSERTION ONLY.
- 4 Δ = CONTACT PLATING CODE SEE CHART FOR CODE AND DESCRIPTION

SPECIFICATIONS

MATERIALS

- 1 Insulator: Polyester Thermoplastic, Glass Filled Color: Black
- 2 Contact: Copper Nickel Alloy No. 725 Finish: Mating Zone: Gold Over Nickel Compliant Zone: SEE CHART
- 3 Shield: Cold Rolled Steel Finish: Pure Tin
- 4 Insert, Flush #4-40 Thd. Carbon Steel Finish: Pure Tin
- 5 Insertion and Dust Cover Polycarbonate Thermoplastic Color: Red

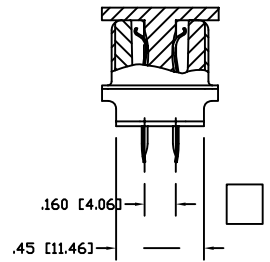
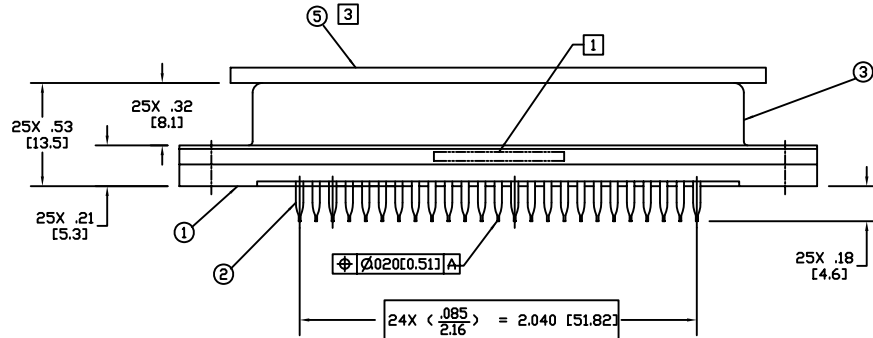
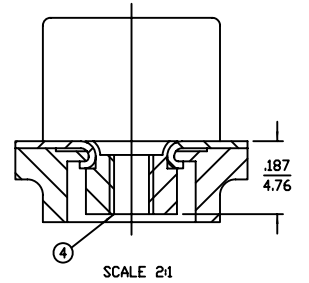
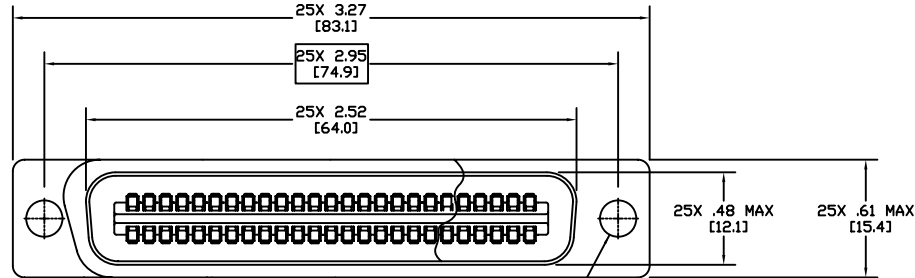
PERFORMANCE CHARACTERISTICS

Insulation resistance: 5,000 megohms minimum
 Current rating: 1 amp @ 70°C
 1.5 amp @ 20°C
 Operating temperature range: -55°C to +125°C
 Contact resistance: 2 milliohms maximum

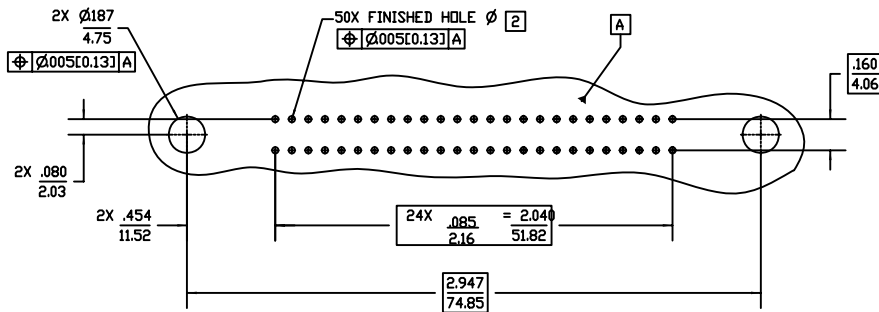
Compliant Contact

Max. Insertion Force (per contact) — 40 lbs. / 179 N maximum
 Min. Retention Force (per contact) — 7 lbs. / 31 N minimum

REV	DESCRIPTION	BY DATE	APPD
B	ER6996	PSN 03/10/08	V.B.H.



CATALOG No. 1841250R1Δ5556 SHOWN



2 RECOMMENDED PC BOARD REQUIREMENTS (COMPONENT SIDE OF BOARD SHOWN)

Δ	COMPLIANT ZONE	DESCRIPTION
D	TIN LEAD OVER NICKEL	ROHS WITH C-PRESS EXEMPTION
H	PURE TIN OVER NICKEL	ROHS WITHOUT EXEMPTION

PER ASME Y14.5M-1994 UNLESS OTHERWISE SPECIFIED, DIMENSIONS ARE IN INCHES/MM
 TOLERANCES:
 DECIMALS .XX /X.X±.02[0.5]
 .XXX /X.XX±.005[0.13]
 ANGLES ± X° SCALE: 1:1



CUSTOMER DRAWING

TITLE
 RECEPTACLE C'TEL SHIELD
 .085 X .160 GRID
 C'PRESS CONNECTOR (RoHS)

DRAWN DATE APPROVED DATE
 C.W.B. 01/22/07 W.P.M. 02/20/07
 APPROVED DATE APPROVED DATE
 V.B.H. 02/16/07

A 27420 SHT. 1 OF 1 REV. B