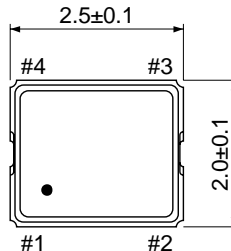
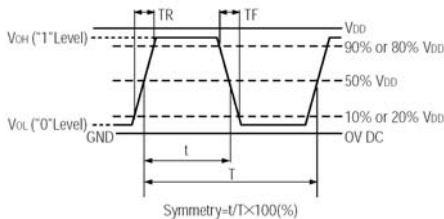
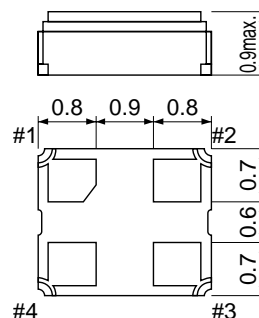
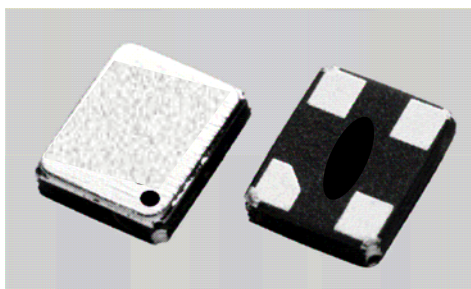


- 1. Part No. : 22SMODO
- 2. Nominal frequency : Output 1: 1.0000 MHz to 52.0000 MHz (blank frequency)
Output 2: 13.0000 MHz to 52.0000 MHz (1/1 or 1/2 divided frequency)
- 3. Frequency stability : ±25ppm, ±30ppm, ±50 ppm or ±100ppm over all conditions
- 4. Operating Conditions
 - Operating temperature : -20°C to +75°C
-40°C to +85°C (W)
 - Storage temperature : -55°C to +100°C
 - Input voltage (V_{DD}) : +1.8V to +3.3V DC ±10%
- 5. Input current : 4 mA, typ. at f = 27 MHz, V_{DD}=+3.3V, CL=15pF
- 6. Output (-20°C to +75°C)
 - Symmetry : 40% to 60% at 1/2 V_{DD} level
 - Rise and fall times : 10 ns max. (10%V_{DD} to 90%V_{DD} level)
 - "0" level : 10%V_{DD} max.(V_{oL})
 - "1" level : 90%V_{DD} min.(V_{oH})
 - Output load : CMOS 15pF max.
- 7. Start-up time : 10 ms max.
- 8. Aging : ±5 ppm max. at +25°C ±3K for first year
- 9. Reflow soldering condition : +250°C ±10K for 10 seconds (reflow soldering)
+170°C ±10K for 1 to 2 minutes (preheating)
- 10. Outline dimensions : See below

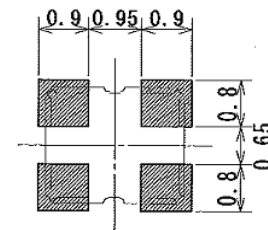


22SMODO
RoHS compliant (Pb-FREE)

PIN	CONNECTION
1	OUTPUT 2
2	GND
3	OUTPUT 1
4	V _{DD}



Example of a Terminal Land Pattern



mm

ISSUED		CHECKED		APPROVAL	
SMI 09/04/06	Umi Yagisawa	SMI 09/04/06	<i>Hayato</i>	SMI 09/04/06	<i>[Signature]</i>
SMI	ITEM. DUAL OUTPUT CRYSTAL CLOCK OSCILLATORS	No.		SO-9936C	