

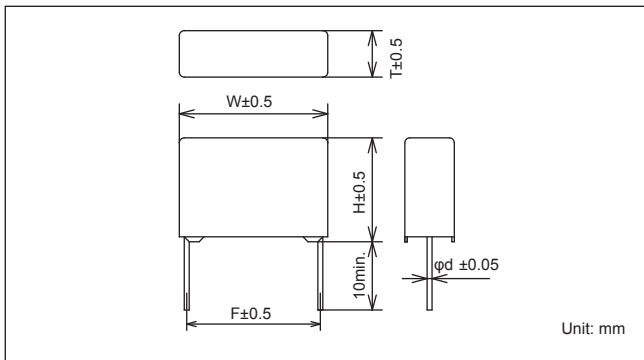
Features

- Smaller than AFC series.
- High withstand voltage (between line and case, 2500VAC - 60sec.)

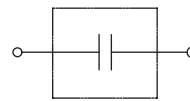
Applications

- Active filter circuit for electrical appliances. (PFC circuit)
- PFC circuit of electrical equipment
- Flat-TV, PC, LED lighting etc.

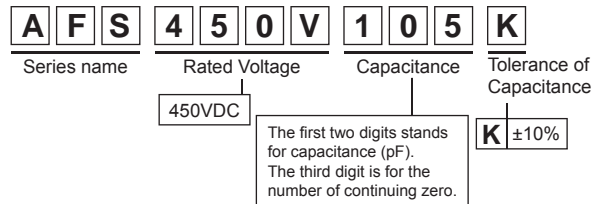
Dimensions



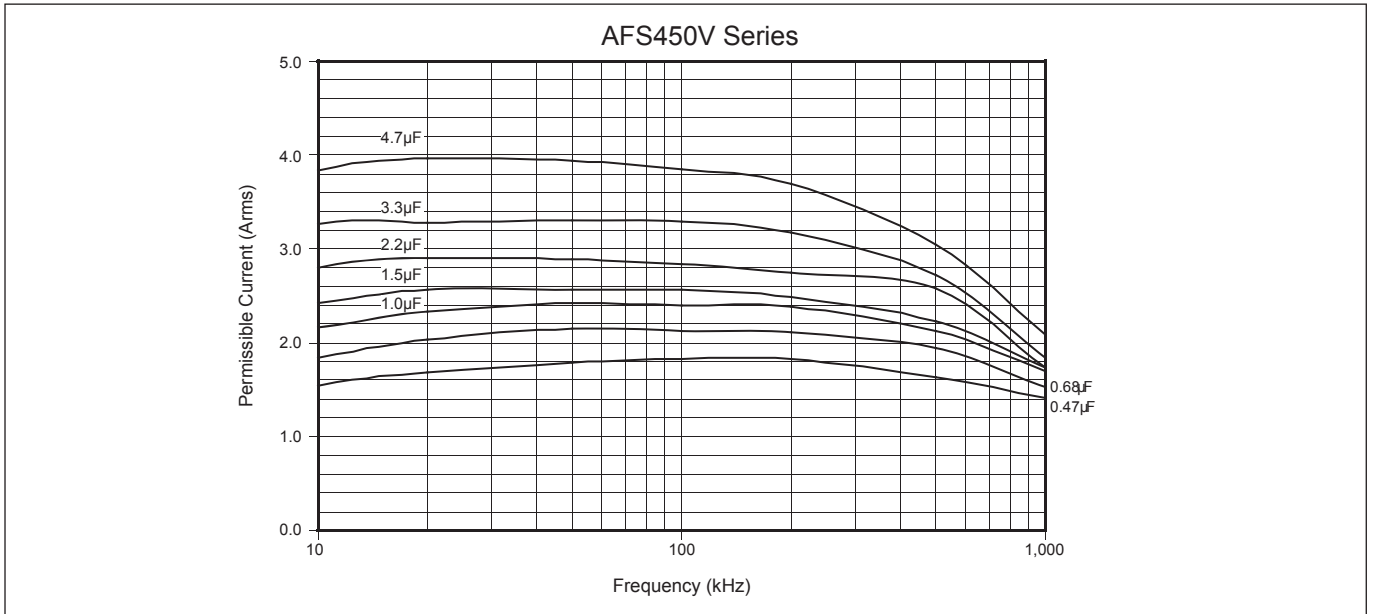
Circuit



Model numbering system



Permissible current data (r.m.s. value)



Electrical Specifications

Rated Voltage	Model Number	Capacitance $\mu\text{F} \pm 10\%$	Dimensions					Dissipation Factor	Test Voltage	Insulation Resistance
			W	H	T	F	d			
450VDC	AFS450V474K	0.47	17.5	13.5	5.5	15.0	0.8	0.002max. (at 1k $\pm 100\text{Hz}$)	Line to Line Rated Voltage $\times 1.75\text{VDC}$ (2~5sec)	Line to Line 7,500 Ω •Fmin. Line to Case 100,000 $\text{M}\Omega$ min. (at 100VDC)
	AFS450V684K	0.68	17.5	14.5	6.5	15.0	0.8			
	AFS450V105K	1.0	17.5	16.0	7.5	15.0	0.8			
	AFS450V155K	1.5	17.5	17.5	9.5	15.0	0.8			
	AFS450V225K	2.2	25.5	17.5	9.5	22.5	0.8			
	AFS450V335K	3.3	25.5	20.5	11.0	22.5	0.8			
	AFS450V475K	4.7	25.5	22.5	13.5	22.5	0.8			

It is possible to use from more than 85°C to 105°C by derating of rated voltage.

Operating Temperature: -40~+105°C