

## Automotive Circuit Breakers

Cooper Bussmann offers the industry's largest selection of automotive circuit breakers including both OEM-style and fuse-replacement devices.

Circuit breakers are designed to offer a variety of performance characteristics including three types of reset.

(NOTE: Always follow the OEM's recommendations when replacing circuit breakers. Replace only with the same type breaker in aftermarket applications.)

### Type I - Automatic Reset

Circuit breaker automatically resets after opening. If the fault still exists, the breaker will continue to cycle between ON and OFF positions until the overload is corrected. These devices are sometimes called "cycling breakers." Type I/Automatic Reset circuit breakers do not address, or correct, overcurrent or fault conditions. They only react by cycling OFF and ON. Any overcurrent or fault condition that causes any Type I circuit breaker to operate should be corrected as soon as possible. Continual vehicle operation under an overcurrent or fault condition (causing the Type I circuit breaker to cycle) is NOT recommended.

### Type II - Modified Reset

The circuit breaker will remain tripped (in the OFF position) as long as there's power to the circuit, due to an internal resistor. Type II breakers can be reset by turning off the circuit, or by turning off the ignition switch. These devices are sometimes called "non-cycling breakers." Several Cooper Bussmann Type II breakers feature silver-colored bodies.

### Type III - Manual Reset

The circuit breaker will remain tripped (in the OFF position) until an indicator button or lever is manually reset. Type III breakers are also available with a switchable feature, which allows you to use an external button to disable the circuit. Cooper Bussmann circuit breakers feature our patented fail-safe technology - offering an innovative element design which combines the resettable performance of circuit breakers with the short-circuit protection of a fuse.

- Resettable, to work like a normal "cycling" breaker, in low overload conditions.
- Under severe overload or short-circuit conditions, the breaker's element will open to prevent damage to the circuit.

### Blade-Type Breakers

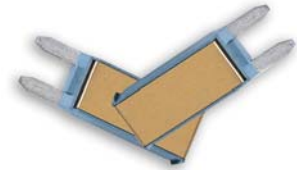
Cooper Bussmann blade-type circuit breakers are available in several reset modes that correspond to SAE categories: SAE Type I (automatic reset), SAE Type II (modified reset) and SAE Type III (manual reset). All Cooper Bussmann blade-type circuit breakers utilize carefully designed and manufactured snap-acting thermal elements with precious metal electrical contacts.

### ATM Footprint Breakers

CB211 and CB212 Cooper Bussmann ATM footprint breakers match the blade footprint of ATM fuses. Ultra-thin, to fit in tight spaces - they're the smallest automotive circuit breakers on the market. Cooper Bussmann ATM footprint breakers comply with SAE standard J553.

#### CB211 Type I ATM Footprint Circuit Breaker

| Part No. (Amps) | Blister Pack |
|-----------------|--------------|
| CB211-7½        |              |
| CB211-10        | X            |
| CB211-15        | X            |
| CB211-20        | X            |
| CB211-25        | X            |
| CB211-30        | X            |



#### CB212 Type II ATM Footprint Circuit Breaker

| Part No. (Amps) |
|-----------------|
| CB212-10        |
| CB212-15        |
| CB212-20        |
| CB212-25        |
| CB212-30        |



#### MMB Type I Wide ATM Footprint Circuit Breaker For GM Vehicles

| Part No. (Amps) | OEM No.  |
|-----------------|----------|
| MMB-15          | 12135171 |
| MMB-20          | 12135072 |



### Mini Devices

Transorb, resistor and diode vehicle-style electrical protection devices easily install in common ATM fuse holders. These circuit protection devices provide voltage and current limiting functionality to vehicle circuitry; and are designed for the on- and off-highway requirements of heavy trucks, RV, construction, agriculture, ATV and material handling equipment.

- **Transorb** - Protects against voltage spikes. Clamp rating: 27Vdc. Power rating: 1500W
- **Resistor** - Drops circuit voltage. Power rating: 5W. Resistance: 68Ω.
- **Diode** - Prevents reverse current flow. Amp rating: 6A.



| Part No.    | Description                                   |
|-------------|---|
| CB22901-1.5 | Transorb voltage spike protector              |
| CB22902-68  | Resistor voltage drop device                  |
| CB22903-6   | Diode reverse current protector               |
| CB22903-6V  | Diode reverse current protector with wing key |

## Automotive Circuit Breakers

### ATC Breakers

CB221 and CB222 breakers are designed to fit ATC style fuse panels. Cooper Bussmann ATC breakers are the thinnest available in the aftermarket. These devices comply with SAE standard J553.

CB227 complies with SAE J553 and SAE J1171 for ignition protection.

Cooper Bussmann also offers three ATC-style breakers as replacement parts for specific OEM applications - ACB-20, CCB-25, and FCB-20.

### ACB-20 Type I ATC Footprint Circuit Breaker for GM Vehicles

| Part No. (Amps) | Blister Pack | OEM No.  |
|-----------------|--------------|----------|
| ACB-20          | X            | 12040816 |



### CB221 Type I ATC Footprint Circuit Breakers

| Part No. (Amps) |
|-----------------|
| CB221-7½        |
| CB221-10        |
| CB221-15        |
| CB221-20        |
| CB221-25        |
| CB221-30        |



### CB222 Type II ATC Footprint Circuit Breakers

| Part No. (Amps) |
|-----------------|
| CB222-10        |
| CB222-15        |
| CB222-20        |
| CB222-25        |
| CB222-30        |



### CB223 Type III ATC Footprint Circuit Breakers

| Part No. (Amps) |
|-----------------|
| CB223-7½        |
| CB223-10        |
| CB223-15        |
| CB223-20        |
| CB223-25        |
| CB223-30        |



### CB227 Type III ATC Footprint Low-Profile Circuit Breakers

| Color Code | Part No. (Amps) |
|------------|-----------------|
| Tan        | CB227-5         |
| Moss Green | CB227-6         |
| Brown      | CB227-7½        |
| Red        | CB227-10        |
| Blue       | CB227-15        |
| Yellow     | CB227-20        |
| White      | CB227-25        |
| Green      | CB227-30        |



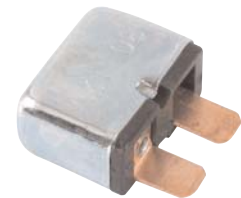
### CCB-25 Type I ATC Footprint Circuit Breaker For Chrysler Vehicles

| Part No. (Amps) | OEM No. |
|-----------------|---------|
| BP/CCB-25       | 4527053 |



### CBB-30 Type II ATC Footprint Circuit Breaker

| Part No. (Amps) | Blister Pack |
|-----------------|--------------|
| CBB-30          | X            |



### FCB-20 Type II ATC Footprint Circuit Breaker for Ford Vehicles

| Part No. (Amps) | OEM No.       |
|-----------------|---------------|
| BP/FCB-20       | D9AB-14526-BA |



### UCB Type I ATC Footprint Circuit Breakers

UCB breakers feature "snap-off" universal blades that can easily be sized to fit applications where fuse block spacing is tight, or the fuse terminal is recessed.

| Color Code | Part No. (Amps) | Blister Pack | Tri-Lingual Blister |
|------------|-----------------|--------------|---------------------|
| Plain      | UCB-6           | X            |                     |
| Brown      | UCB-8           | X            |                     |
| Red        | UCB-10          | X            |                     |
| Blue       | UCB-15          | X            | X                   |
| Yellow     | UCB-20          | X            |                     |
| Plain      | UCB-25          | X            |                     |
| Green      | UCB-30          | X            | X                   |



## Automotive Circuit Breakers

### Maxi Breakers

Identical in size to Maxi-style fuses. The only breakers on the market to match the Maxi's footprint and body dimensions.

#### CB1911 Type I MAX Footprint Circuit Breakers

| Part No. (Amps) |
|-----------------|
| CB1911-10       |
| CB1911-15       |
| CB1911-20       |
| CB1911-25       |
| CB1911-30       |
| CB1911-35       |
| CB1911-40       |
| CB1911-50       |



#### CB1921 Type II MAX Footprint Circuit Breakers

| Part No. (Amps) |
|-----------------|
| CB1921-10       |
| CB1921-15       |
| CB1921-20       |
| CB1921-25       |
| CB1921-30       |



### Glass Tube Breakers

#### CBF Type II Circuit Breakers For Use In Glass Tube Fuse Holders and Blocks

CBF circuit breakers can be used to replace glass fuses in 1/4" x 1 1/4" small dimension fuse blocks.

| Part No. (Amps) | Blister Pack |
|-----------------|--------------|
| CBF-6           |              |
| CBF-10          | X            |
| CBF-15          | X            |
| CBF-20          | X            |
| CBF-25          | X            |
| CBF-30          | X            |
| CBF-35          |              |
| CBF-40          | X            |



### Heavy-Duty Breakers

Used in many heavy-duty and truck applications. Use ring terminals to connect breaker into circuit. CBS are standard-duty and CBC are heavy-duty type breakers.

Cooper Bussmann stud-type circuit breakers feature our patented fail-safe technology, and are available in styles: without bracket; with mounting bracket; waterproof, with mounting bracket and with combination blade and stud terminals. Complies with SAE standard J553.

#### CB123-B Type III 10-32 Stud-Mount Circuit Breakers with Crosswise Bracket and Cover

| Part No. (Amps) |
|-----------------|
| CB123-10B       |
| CB123-15B       |
| CB123-20B       |
| CB123-30B       |
| CB123-40B       |
| CB123-50B       |



#### CB123-HB Type III 10-32 Stud-Mount Circuit Breakers with Lengthwise Bracket and Cover

| Part No. (Amps) |
|-----------------|
| CB123-10HB      |
| CB123-15HB      |
| CB123-20HB      |
| CB123-30HB      |
| CB123-40HB      |
| CB123-50HB      |



#### CBC Type I 10-32 Stud-Mount Circuit Breakers

| Part No. (Amps) |
|-----------------|
| CBC-8           |
| CBC-10          |
| CBC-15          |
| CBC-20          |
| CBC-25          |
| CBC-30          |
| CBC-35          |
| CBC-40          |
| CBC-50          |



#### CBC-B Type I 10-32 Stud-Mount Circuit Breakers with Crosswise Bracket

| Part No. (Amps) | Blister Pack | Tri-Lingual Blister |
|-----------------|--------------|---------------------|
| CBC-8B          |              |                     |
| CBC-10B         |              |                     |
| CBC-15B         |              |                     |
| CBC-20B         | X            |                     |
| CBC-25B         | X            |                     |
| CBC-30B         | X            | X                   |
| CBC-35B         | X            |                     |
| CBC-40B         | X            |                     |
| CBC-50B         | X            |                     |



## Automotive Circuit Breakers

### CBC-BWP Type I 10-32 Stud-Mount Weatherproof Circuit Breakers

**Part No. (Amps)**

CBC-20BWP  
CBC-30BWP



### CBC-HB Type I 10-32 Stud-Mount Circuit Breakers with Lengthwise Bracket

| Part No. (Amps) | Blister Pack |
|-----------------|--------------|
| CBC-10HB        |              |
| CBC-15HB        |              |
| CBC-20HB        | X            |
| CBC-25HB        |              |
| CBC-30HB        | X            |
| CBC-40HB        | X            |
| CBC-50HB        | X            |



### CBP-BA Type I 10-32 Stud-Mount Circuit Breakers with Crosswise Bracket

**Part No. (Amps)**

CBP-20BA  
CBP-25BA  
CBP-30BA  
CBP-40BA  
CBP-50BA



### Panel-Mount Breakers

Used in trucks, RVs, boats, buses, etc. offered with 1/4" quick-connect or 90° bent screw terminals.

#### CB174 Type III Circuit Breakers with 1/4" Quick-Connect Terminals

**Part No. (Amps)**

CB174-8  
CB174-10  
CB174-15  
CB174-20  
CB174-25  
CB174-30



#### CB174B Type III Circuit Breakers with 90° 5-32 Screw Terminals

**Part No. (Amps)**

CB174B-10  
CB174B-15  
CB174B-20  
CB174B-25  
CB174B-30  
CB174B-40



### Quick-Connect Breakers

Used in trucks, RVs, boats, buses, etc. offered with 1/4" quick-connect or 90° bent screw terminals.

#### CBT-M Type II Circuit Breakers For Mack Trucks with 1/4" Blades on 1" Centers

**Part No. (Amps)**

CBT-10M  
CBT-15M  
CBT-20M  
CBT-25M  
CBT-30M



#### CBT-N Type II Circuit Breakers For Navistar Trucks with 1/4" Blades on 1.08" Centers

**Part No. (Amps)**

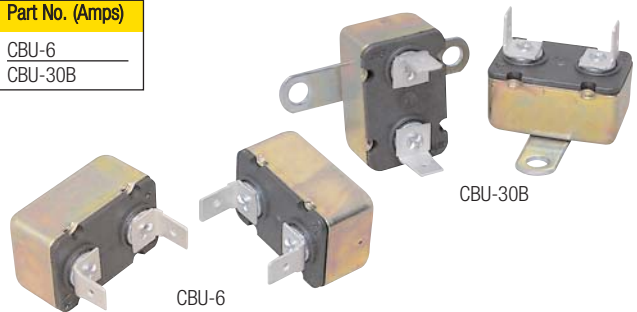
CBT-10N  
CBT-15N  
CBT-20N  
CBT-25N  
CBT-30N



#### CBU Type I Circuit Breakers with 1/4" Quick-Connect Terminals on 0.99" Centers (30B with crosswise bracket)

**Part No. (Amps)**

CBU-6  
CBU-30B



## Automotive Circuit Breakers

### High Amp Circuit Breakers

These high amp circuit breakers are typically used in auxiliary and accessory circuits for trucks, buses, RVs and marine applications. All high amp circuit breakers comply with the SAE J1117 standard for ignition protection and have applications in battery charger systems and DC audio systems. Offered in flush-mount or panel-mount (see chart for amps available).

#### CB181F Type I High Amp Waterproof Circuit Breakers with SEMS Nut Installed

| Part No. (Amps) |            |
|-----------------|------------|
| CB181F-60       | CB181F-110 |
| CB181F-70       | CB181F-120 |
| CB181F-80       | CB181F-135 |
| CB181F-90       | CB181F-150 |
| CB181F-100      |            |



#### CB184F Type III High Amp Waterproof Manual Reset Circuit Breakers with SEMS Nut Installed

| Part No. (Amps) |            |
|-----------------|------------|
| CB184F-25       | CB184F-80  |
| CB184F-30       | CB184F-90  |
| CB184F-35       | CB184F-100 |
| CB184F-40       | CB184F-110 |
| CB184F-50       | CB184F-120 |
| CB184F-60       | CB184F-135 |
| CB184F-70       | CB184F-150 |



#### CB185 Type III High Amp Switchable, Waterproof, Flush-Mount Manual Reset Circuit Breakers with SEMS Nut Installed

| Part No. (Amps) | Blister Pack |
|-----------------|--------------|
| CB185-25        |              |
| CB185-30        |              |
| CB185-35        |              |
| CB185-40        |              |
| CB185-50        | X            |
| CB185-60        |              |
| CB185-70        | X            |
| CB185-80        | X            |
| CB185-90        |              |
| CB185-100       | X            |
| CB185-110       |              |
| CB185-120       | X            |
| CB185-135       | X            |
| CB185-150       | X            |



#### CB185P Type III High Amp Switchable, Panel Mount Manual Reset Circuit Breakers with SEMS Nut Installed

| Part No. (Amps) |            |
|-----------------|------------|
| CB185P-25       | CB185P-80  |
| CB185P-30       | CB185P-90  |
| CB185P-35       | CB185P-100 |
| CB185P-40       | CB185P-110 |
| CB185P-50       | CB185P-120 |
| CB185P-60       | CB185P-135 |
| CB185P-70       | CB185P-150 |



### Marine-Rated Circuit Breakers

Specifically designed to meet the needs of marine applications, the CB187F and CB187P offer 5kA interrupting ratings and ignition protection per ABYC E-11. Usable as an ON/OFF switch (capable of withstanding 3000 on/off cycles @48Vdc), they have corrosion resistant plating on 1/16-18 copper terminals.

#### CB187F Type III Marine-Rated Surface-Mount Manual Reset Circuit Breaker with Switch Function

| Part No. (Amps) |            |
|-----------------|------------|
| CB187F-25       | CB187F-80  |
| CB187F-30       | CB187F-90  |
| CB187F-35       | CB187F-100 |
| CB187F-40       | CB187F-110 |
| CB187F-50       | CB187F-120 |
| CB187F-60       | CB187F-135 |
| CB187F-70       | CB187F-150 |



#### CB187P Type III Marine-Rated Panel-Mount Manual Reset Circuit Breaker with Switch Function

| Part No. (Amps) |            |
|-----------------|------------|
| CB187P-25       | CB187P-80  |
| CB187P-30       | CB187P-90  |
| CB187P-35       | CB187P-100 |
| CB187P-40       | CB187P-110 |
| CB187P-50       | CB187P-120 |
| CB187P-60       | CB187P-135 |
| CB187P-70       | CB187P-150 |



#### CB251 Type I Ignition Protected Weatherproof Panel-Mount Manual Reset Circuit Breaker, 32Vdc

| Part No. (Amps) |          |
|-----------------|----------|
| CB251-10        | CB251-30 |
| CB251-15        | CB251-35 |
| CB251-20        | CB251-40 |
| CB251-25        | CB251-50 |



#### CB255 Type III Ignition Protected Weatherproof Panel-Mount Manual Reset Circuit Breaker with "Push-to-Trip" Option, 32Vdc

| Part No. (Amps) |          |
|-----------------|----------|
| CB255-10        | CB255-30 |
| CB255-15        | CB255-35 |
| CB255-20        | CB255-40 |
| CB255-25        | CB255-50 |

