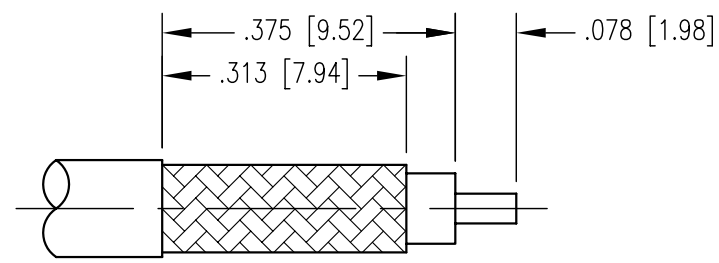
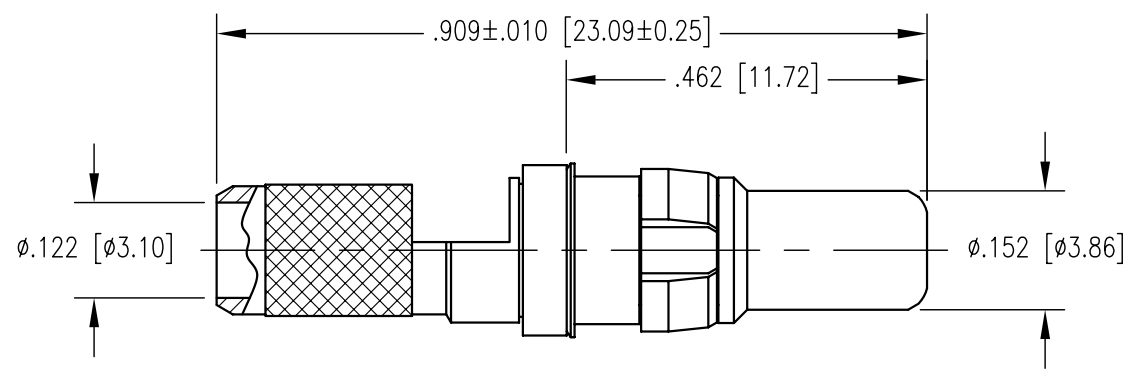
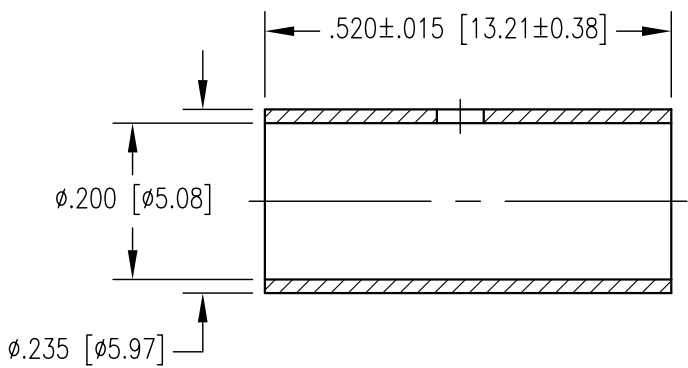


| REV | DESCRIPTION | BY DATE | APPD |
|-----|-----------------------|------------|------|
| A | RELEASED PER ECR 8064 | JED 3/1/04 | KJT |



CABLE TRIMMING DIMENSIONS

NOTES:

- MATERIALS:
 BODY: BRASS PER ASTM B16
 CENTER CONTACT AND FERRULE: COPPER ALLOY
 CLIP RING: PHOSPHOR BRONZE PER ASTM B103
 SPRING WASHER: BERYLLIUM COPPER PER ASTM B194
 INSULATOR: TEFLON PER ASTM D1710
- FINISH:
 BODY AND CENTER CONTACT: .000015 MIN. GOLD PER ASTM B488 OVER
 .000100 MIN. COPPER PER MIL-C-14550
 FERRULE: .000100 MIN. TIN PER ASTM B545 OVER
 OVER COPPER FLASH
 CLIP RING AND SPRING WASHER: UNPLATED
- DESIGNED FOR USE WITH RG-58 CABLE OR EQUIVALENT.
- FOR CABLING PROCEDURES USE CAP 5-07 WITH TRIMMING DIMENSIONS SHOWN.
- CRIMP FERRULE USING .213 HEX DIE.

PER ASME Y14.5M-1994
 UNLESS OTHERWISE SPECIFIED:
 DIMENSIONS ARE IN INCHES (MM)
 TOLERANCES:
 DECIMALS .XX ± .01/0.254
 .XXX ± .005/0.127
 ANGLES ± 2° SCALE: 4:1



Winchester Electronics 62 Barnes Industrial Road North
 Wallingford, CT 06492

CUSTOMER DRAWING



TITLE
 RDM STRAIGHT PLUG

| | | | |
|-----------------|-----------------|----------------|-----------------|
| DRAWN JED | DATE 3/1/04 | CHECKED CWB | DATE 3/16/04 |
| APPROVED KJT | DATE 3/16/04 | APPROVED MC | DATE 3/16/04 |

| | | | | |
|---|-----------------|------|----|------|
| A | SD200-510-1160J | SHT. | OF | REV. |
| | | 1 | 1 | A |