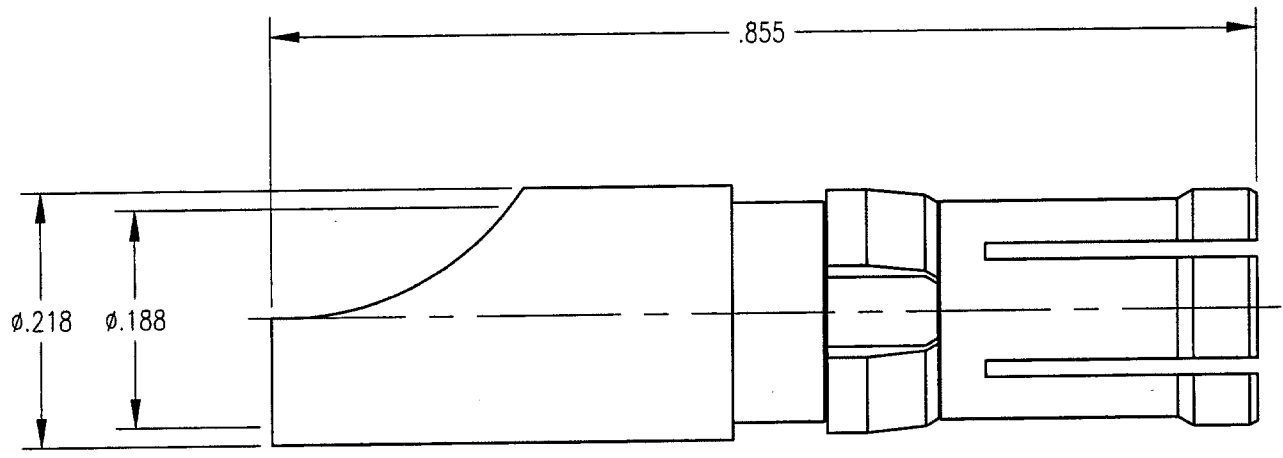


DWG. NO. 221-510-0000G

REV	DESCRIPTION	BY DATE	APPD
C	ECN 2364	KJT 2/8/00	LJS



NOTES:

1. MATERIALS:  
 BODY: BERYLLIUM COPPER PER ASTM B196  
 CLIP RING: BERYLLIUM COPPER PER ASTM B194
2. FINISH:  
 BODY: .000030 MIN. GOLD PER MIL-G-45204 OVER  
 .000050 MIN. NICKEL PER QQ-N-290  
 CLIP RING: .000100 MIN. NICKEL PER QQ-N-290  
 OVER COPPER FLASH

PER ASME Y14.5M-1994 UNLESS OTHERWISE SPECIFIED: DIMENSIONS ARE IN INCHES (MM)		<b>Litton</b> <b>Winchester/Retconn</b> 400 Park Road Waterbury, Connecticut 06795	
TOLERANCES: DECIMALS .XX ± .01/0.254 .XXX ± .005/0.127 ANGLES ± 2°		SCALE: 6:1	
<b>CUSTOMER DRAWING</b>		TITLE <b>40 AMP POWER RECEPTACLE</b>	
DRAWN JMC	DATE 8/12/98	CHECKED PAT	DATE 8/12/98
APPROVED KJT	DATE 8/12/98	APPROVED KJT	DATE 8/12/98
<b>A</b>		221-510-0000G	SHT. OF REV. 1 1 C