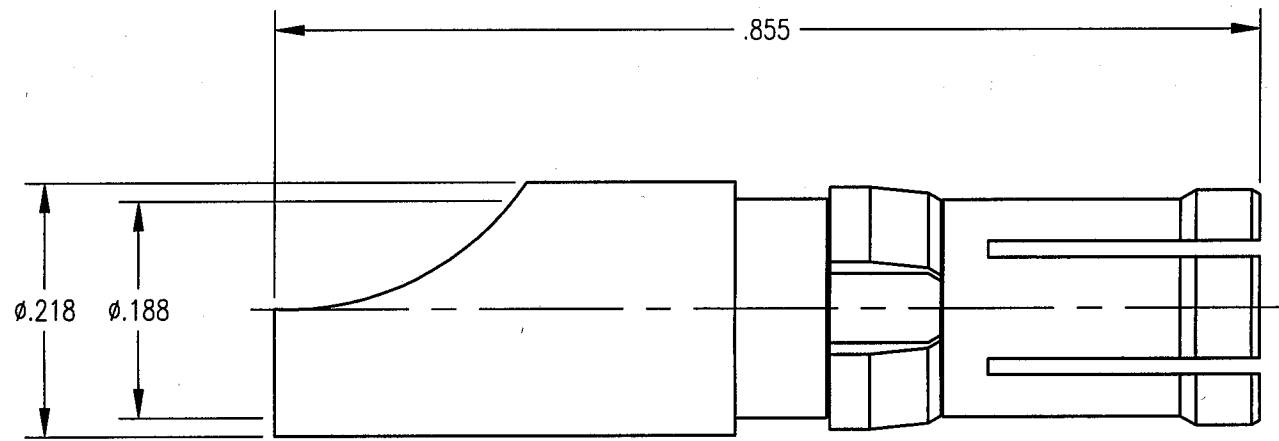


DWG. NO. 221-510-0006G

REV	DESCRIPTION	BY DATE	APPD
A	ECN 2369	JMF 8/2/00	LSJ



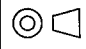
NOTES:

1. MATERIALS:

BODY: BERYLLIUM COPPER PER ASTM B196
 CLIP RING: BERYLLIUM COPPER PER ASTM B194

2. FINISH:

BODY: .000030 MIN. GOLD PER MIL-G-45204 OVER
 .000050 MIN. NICKEL PER QQ-N-290
 CLIP RING: .000100 MIN. NICKEL PER QQ-N-290
 OVER COPPER FLASH

PER ASME Y14.5M-1994 UNLESS OTHERWISE SPECIFIED: DIMENSIONS ARE IN INCHES (MM)		Litton Winchester/Retconn 400 Park Road Watertown, Connecticut 06795	
TOLERANCES: DECIMALS .XX ± .01/0.254 .XXX ± .005/0.127 ANGLES ± 2' SCALE:		TITLE RECEPTACLE, HIGH POWER	
CUSTOMER DRAWING			
DRAWN JMC	DATE 6/4/99	CHECKED JED	DATE 6/4/99
APPROVED TLB	DATE 6/4/99	APPROVED TLB	DATE 6/4/99
A		221-510-0006G	SHT. OF REV. 1 1 A