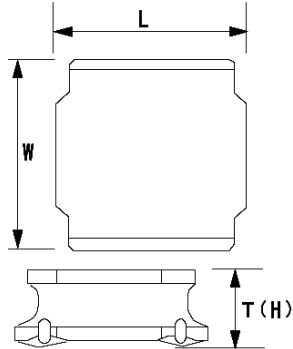


SMD Power Inductors (NR series S type)

NRS6020T6R8NMGJ



■ Features

- Item Summary
6.8 μ H(\pm 30%), 2000mA, 1800mA
- Lifecycle Stage
Mass Production
- Standard packaging quantity (minimum)
Taping 2500pcs

■ Products characteristics table

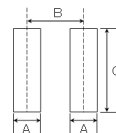
CaseSize (EIA/JIS)	~/6020
Inductance	6.8 μ H(\pm 30%)
Inductance Measuring Frequency	100kHz
Rated Current -Saturation Current	2000mA
Rated Current -Temperature Rise Current	1800mA
DC Resistance (max)	0.102 Ω
Avg. of DC.Resistance	0.085 Ω
Temperature Range	-25°C to 125°C
Self-resonant Frequency (min)	30MHz
RoHS Compliance	Yes
Halogen Free	Yes
Soldering Method	Reflow

■ External Dimensions

L	6mm \pm 0.2
W	6mm \pm 0.2
H	2mm max

■ Recommended Land Patterns

【推奨ランドパターン】 実装上の注意 ・実装状態を確認の上ご使用くださいようお願いいたします。 ・本製品のはんだ付けはリフローはんだ工法に限ります。
【Recommended Land Patterns】 Surface Mounting ・Mounting and soldering conditions should be checked beforehand. ・Applicable soldering process to these products is reflow soldering only.



SMD Power Inductors (NR series/NR series H type/S type /V type)			
Type	A	B	C
NRS601.0			
NR 601.2, NRS601.2			
NRS601.4	1.6	4.7	5.7
NR 6020, NRS6020			
NR 6038, NRS6038			
NR 6045, NRS6045			

unit: mm

2013.07.17

The data is reference only. Electrical characteristics vary depending on environment or measurement condition.
TAIYO YUDEN reserves the right to make change to the Date at any time without notice.
Before making final selection, please check product specification.