

SB520WT

SCHOTTKY BARRIER DIODE

Features

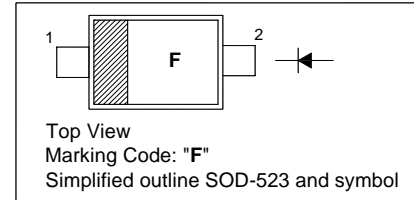
- Ultra small SMD package
- Very low forward voltage

Applications

- Ultra high speed switching
- Voltage clamping
- Low current rectification

PINNING

PIN	DESCRIPTION
1	Cathode
2	Anode

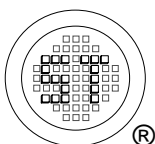


Absolute Maximum Ratings ($T_a = 25\text{ }^\circ\text{C}$)

Parameter	Symbol	Value	Unit
Reverse Voltage	V_R	20	V
Continuous Forward Current	I_F	500	mA
Repetitive Peak Forward Current (at $t_p = 1\text{ ms}$)	I_{FRM}	3.5	A
Non-Repetitive Peak Forward Surge Current ($t = 8\text{ ms}$ square wave)	I_{FSM}	6	A
Junction Temperature	T_j	125	$^\circ\text{C}$
Storage Temperature Range	T_s	- 65 to + 150	$^\circ\text{C}$

Characteristics at $T_a = 25\text{ }^\circ\text{C}$

Parameter	Symbol	Max.	Unit
Forward Voltage at $I_F = 0.1\text{ mA}$ at $I_F = 1\text{ mA}$ at $I_F = 10\text{ mA}$ at $I_F = 100\text{ mA}$ at $I_F = 500\text{ mA}$	V_F	180 240 290 380 650	mV
Reverse Current at $V_R = 10\text{ V}$	I_R	30	μA
Diode Capacitance at $V_R = 1\text{ V}$, $f = 1\text{ MHz}$	C_d	30	pF



SEMTECH ELECTRONICS LTD.

(Subsidiary of Sino-Tech International Holdings Limited, a company listed on the Hong Kong Stock Exchange, Stock Code: 724)



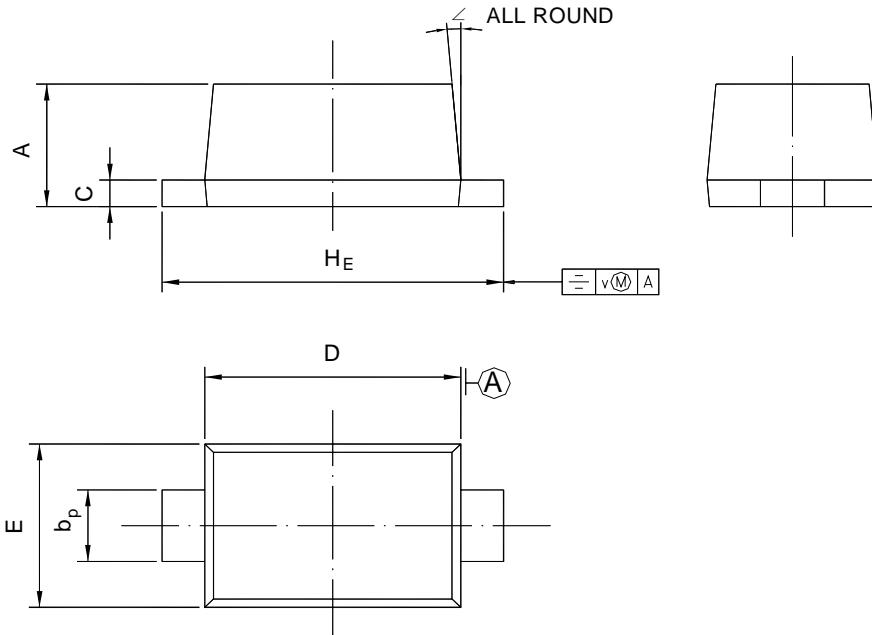
Dated : 23/11/2006

SB520WT

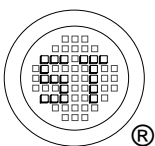
PACKAGE OUTLINE

Plastic surface mounted package; 2 leads

SOD-523



UNIT	A	b _p	C	D	E	H _E	V	∠
mm	0.70 0.60	0.4 0.3	0.135 0.127	1.25 1.15	0.85 0.75	1.7 1.5	0.1	5°



SEMTECH ELECTRONICS LTD.
 (Subsidiary of Sino-Tech International Holdings Limited, a company
 listed on the Hong Kong Stock Exchange, Stock Code: 724)



ISO/TS 16949 : 2002 Certificate No. 05103
 ISO 14001:2004 Certificate No. 7116
 ISO 9001:2000 Certificate No. 0506098

Dated : 23/11/2006