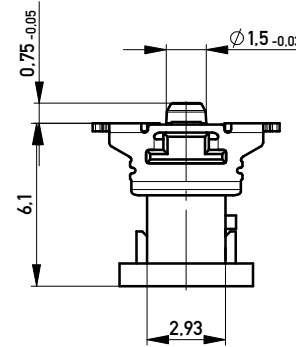
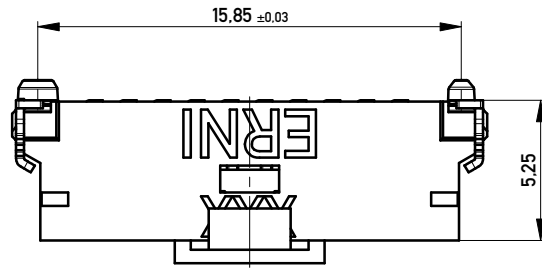
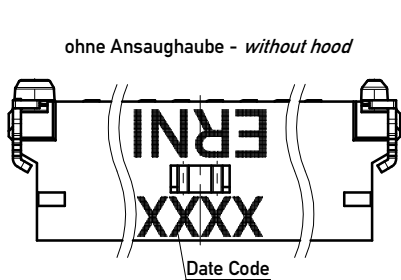
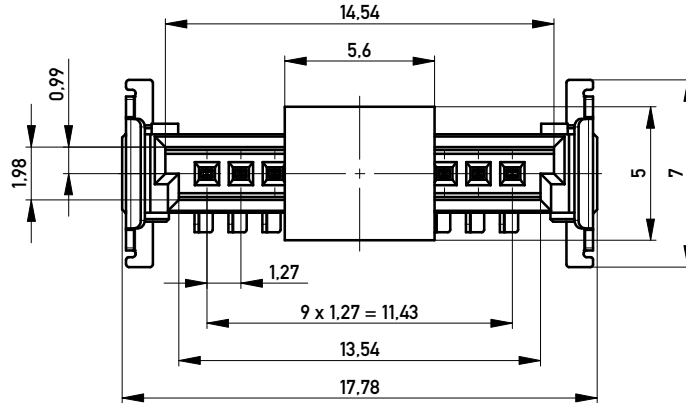
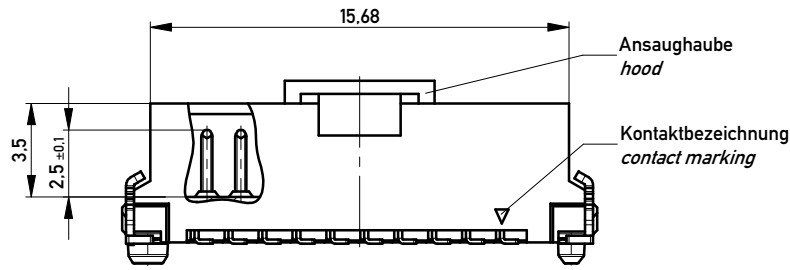


Anforderungsstufe 1  
Performance Level 1

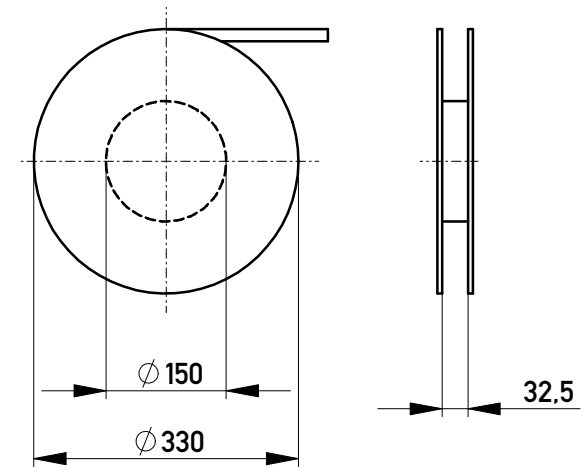
Kontaktbereich vergoldet  
Mating Area gold plating

Anschlussbereich verzinkt 4-6 µm  
Terminal Area 4-6 µm tin plating

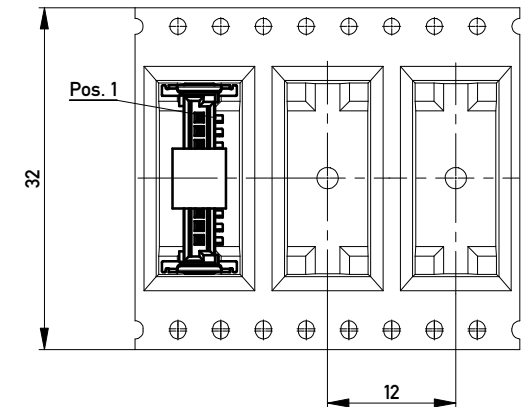
Koplanarität der Anschlüsse ≤ 0.1 mm  
Coplanarity Area of Terminations ≤ 0.1 mm



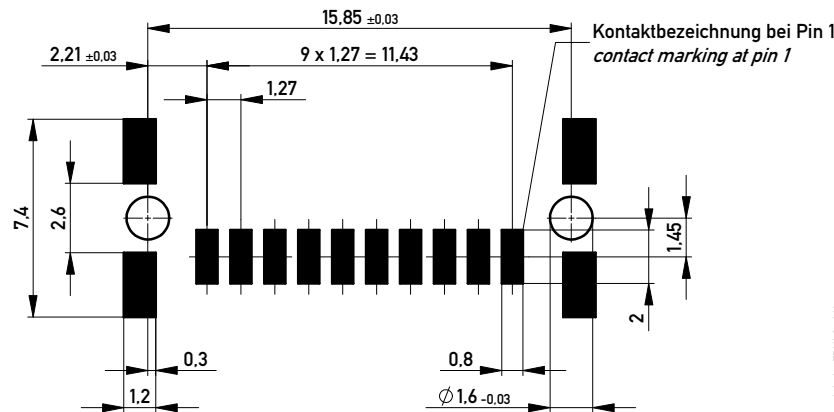
Verpackt in Gurtverpackung - Tape on Reel Packaging  
Verpackungseinheit: 650 Stück - Packaging unit: 650 pcs



Abspulrichtung - Reel off Direction



Leiterplatten-Layout für SMT  
PCB-Layout for SMT



vergrößerte Löt pads  
enlarged solder pads

Information:		Tolerances	All Dimensions in mm	Scale	5:1
All rights reserved. Only for Information. To ensure that this is the latest version of this drawing, please contact one of the ERNI companies before using.		Subject to modification without prior notice. Drawing will not be updated.		Designation	
		www.ERNI.com		1.27 SRC P, 10-polig 1.27 SRC P, 10-pin	
a	30.05.2011			100100980006	
Index	Date			Class SRCP	
				K	A3