

New Jersey Semi-Conductor Products, Inc.

20 STERN AVE.
 SPRINGFIELD, NEW JERSEY 07081
 U.S.A.

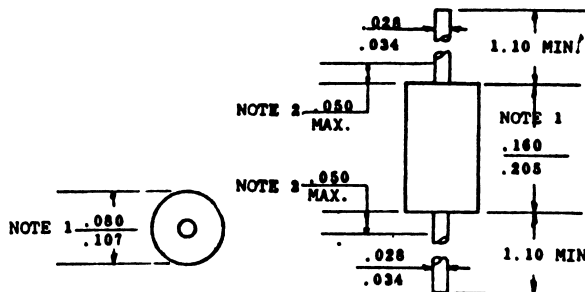
TELEPHONE: (201) 376-2922
 (212) 227-6005
 FAX: (201) 376-8960

PARAMETERS

1N4739D
 REF/REG DIODE, P(D) = 1W

Description: Ref/Reg Diode, P(D) = 1W
 Manufacturer.....
 Mil/High-Rel? (Y/N).....
 Nom. Ref. Volt..... 9.1
 Test Current..... 28m
 Tol. (%)..... 1
 PD Max. (W)..... 1.0
 Dyn. Zmax (j)..... 5.0
 Temp Coef pp/10k..... 6.8
 Oper. Temp (xC) Max..... 200
 Pkg Style..... DO-41
 Surface Mounted (Y/N)..... N

2 It(rms)



- NOTES:
1. Package contour optional within cylinder of diameter .080 and length .160. Slugs .107 .205 if any, shall be included within this cylinder but shall not be subject to the minimum limit of .080 .107
 2. Lead diameter not controlled in this zone to allow for flash, lead finish build up, and minor irregularities other than slugs.



Quality Semi-Conductors