

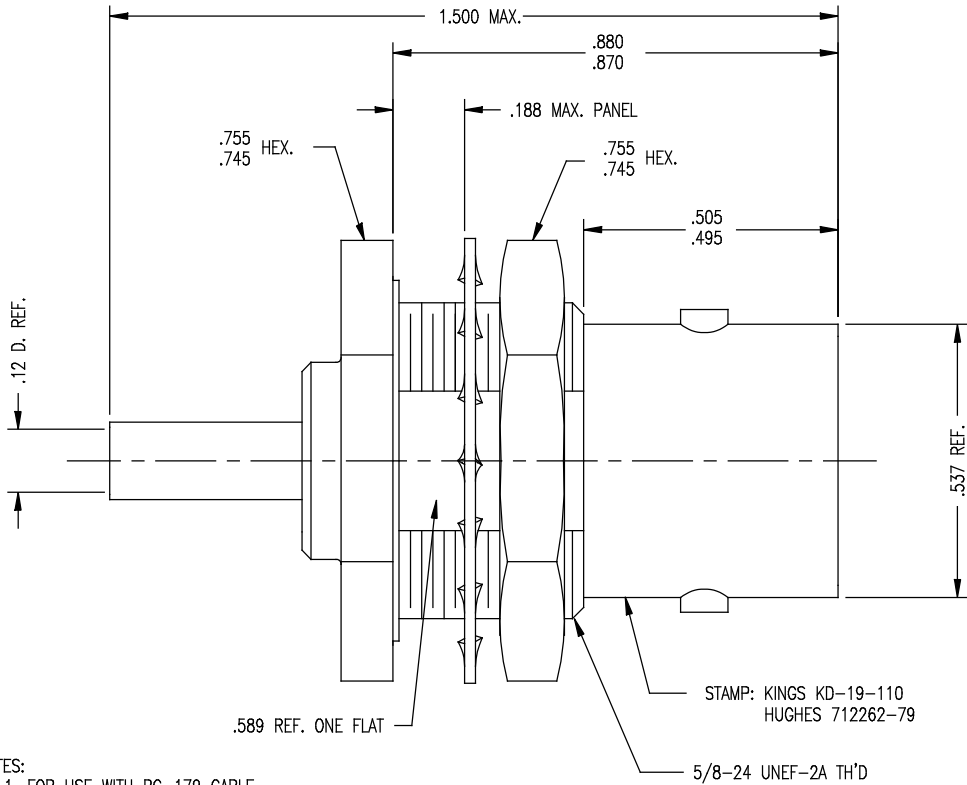
DASH NO.	M CODE	MADE FROM
----------	--------	-----------

GSD

KD-19-110

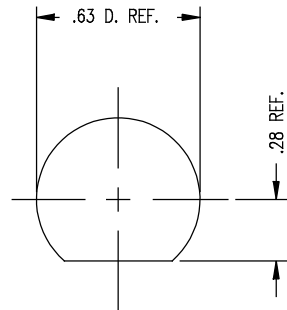
REVISIONS	
ISSUE	CHANGES

0	ER 36793 KH 02/02/96
1	CN 37078 A KH 08/21/96



NOTES:

- FOR USE WITH RG-179 CABLE.
- FOR CABLING INSTRUCTIONS SEE CP-5458.
- FOR CRIMPING USE DIE KTH-2021.
- INTERFACE PER MIL-STD-348, FIG. 302-2.
- MATERIALS:
GASKET-SILICONE RUBBER, ZZ-R-765
K-GRIP SLEEVE-COPPER, ASTM B 133 ALLOY 110
INSULATOR-TEFLON, ASTM-D-4894
LOCKWASHER-PHOSPHOR BRONZE, ASTM-B-103
CENTER CONTACT F-BER. COP., ASTM-B-196
ALL OTHER METAL PARTS-BRASS, ASTM-B16
- FINISHES:
ALL METAL PARTS-SILVER PLATE PER QQ-S-365
- ELECTRIAL CHARACTERISTICS:
NOMINAL IMPEDANCE-50 OHMS
WORKING VOLTAGE-1000 VRMS
FREQUENCY RANGE-DC TO 11 GHZ



MOUNTING HOLE

GSD

KAM6367

SCALE 4:1

APPROX SURFACE AREA

WAS: E-11666

USED ON

REF: HUGHES DWG. # 712262-79

JACK, BULKHEAD, C

DRAWN KH DATE 02/02/96

DESIGN AR DATE 02/03/96

APPR. DATE

KINGS
ELECTRONICS CO., INC.
TUCKAHOE, NEW YORK 10707

KD-19-110