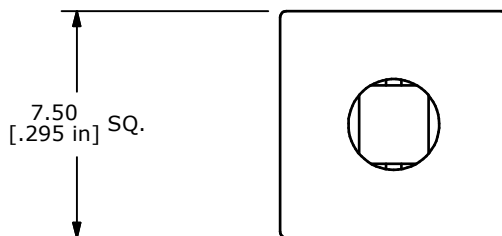
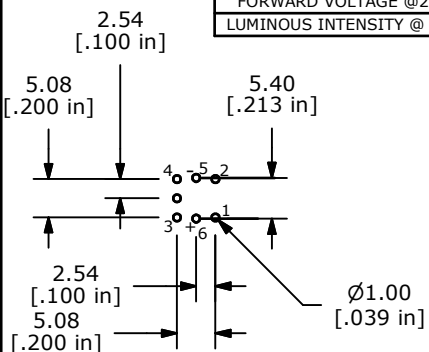
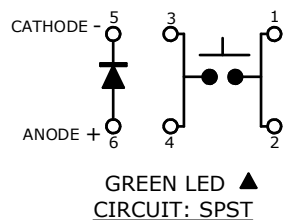
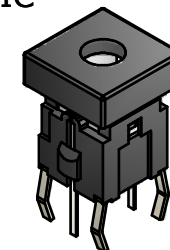


LED SPECS ▲	UNITS	GREEN
FORWARD CURRENT	mA	20
FORWARD VOLTAGE @20mA	V	2.1-2.5
LUMINOUS INTENSITY @ 20mA	MCD	400

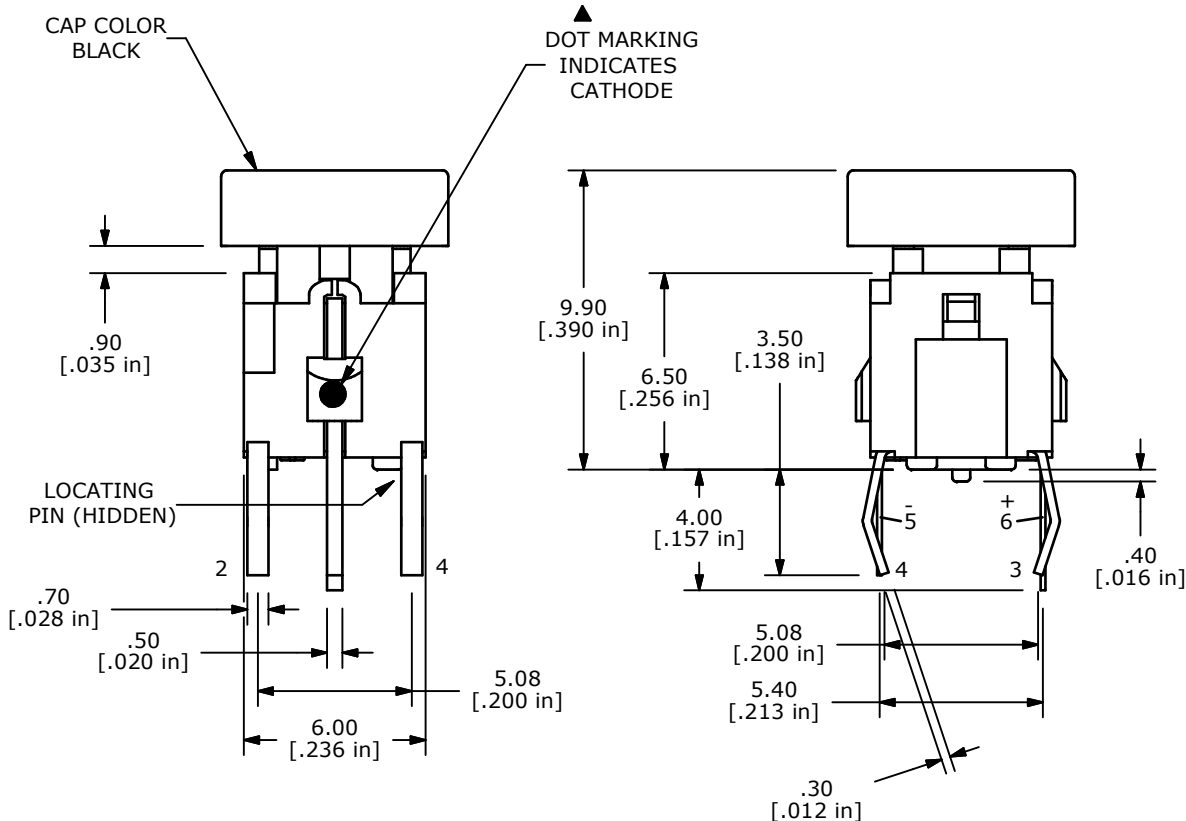


ISOMETRIC



NOTES:

1. ALL DIMENSIONS IN MM [INCH]
2. GENERAL TOLERANCE: X.X=±0.4
X.XX=±0.25
3. RATING: 12VDC @ 50mA
4. CONTACT RESISTANCE: 100 Milli-OHMS MAX.
5. INSULATION RESISTANCE: 100 Mega-OHMS MIN.
- ▲6. OPERATING FORCE: 180± 50gf
7. TRAVEL: 0.2± 0.1mm
8. OPERATING TEMPERATURE: -20°C TO 70°C
9. OPERATING LIFE: 500,000 CYCLES
10. LED: GREEN
11. ▲ DENOTES CRITICAL PARAMETERS
12. 2002/95/EC (ROHS) COMPLIANT
13. PARTS TO BE PACKAGE 100 PARTS PER TRAY.



B	18978	SQUARE BUTTON NOW SHOWN	3/30/10	BLR
A	18431	Release for Production	3/26/10	BLR
REV	PCR NO	DESCRIPTION	DATE	BY

TITLE TL1220S1NNBGN

SCALE	4	DATE	3/30/2010	DR	BLR	DWG	B260010	REV	B
-------	---	------	-----------	----	-----	-----	---------	-----	---