

PVW Series

Piconics PVW series is a tunable chip inductor, which has gold plated wraparound contacts so that it may be soldered in place and the connections made simultaneously. Upper terminations are also suitable for wire bonding. The core is slide tuned and may be fixed in place with epoxy without affecting the inductance. The spacing between contacts is relatively large so that shorting between the contacts during soldering does not normally occur. The PVW series is listed in the Qualified Product List (QPL) M83446 under identifier M83446/18.

FEATURES:

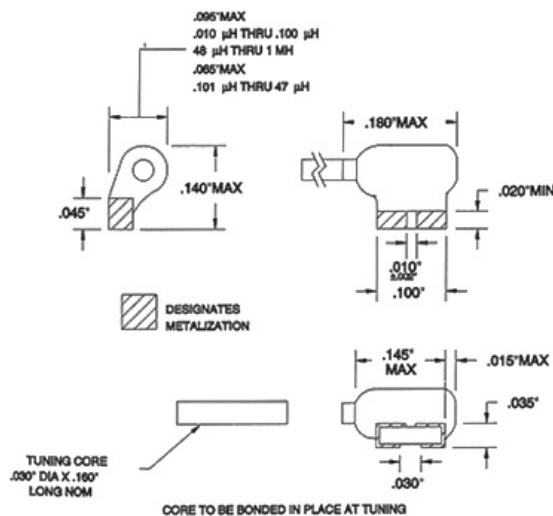
- Wraparound Terminations
- Low Profile
- Slide Tunable
- High Packing Density

ABSOLUTE MAXIMUM RATINGS:

- Operating/Storage temperature: -55° C to +125° C
- Dielectric withstanding voltage: Method 301 of MIL-STD-202, test voltage 700 volts rms.
- Barometric Pressure: Method 105, test condition C. Mil-STD-202, (70,000 feet), test voltage 200 volts rms.

PHYSICAL CHARACTERISTICS:

- Termination: Alumina substrate base, gold plated over nickel; welded internal connection.
- Case: Conformal Coated epoxy.
- Weight: 0.5 gram maximum.



Part number	Lmax uH	Lmin uH	QMin at Lmax	Test Freq Mhz	SRF Min MHZ	DCR Max Ohms	Idc Max mA
PVW160-8I	.016	.012	50	200	1200	0.04	250
PVW250-8I	.025	.020	50	200	1050	0.1	250
PVW510-8I	.051	.036	40	100	740	0.19	250
PVW760-8I	.076	.054	40	100	600	0.3	250
PVW101-8I	.10	.071	30	25	530	.48	250
PVW131-8I	.13	.093	30	25	525	.51	200
PVW151-8I	.15	.11	30	25	500	.52	200
PVW181-8I	.18	.13	30	25	470	.61	180
PVW221-8I	.22	.16	30	25	400	.67	180
PVW271-8I	.27	.19	30	25	350	.75	180
PVW331-8I	.33	.24	30	25	320	.90	140
PVW371-8I	.37	.27	30	25	275	.93	140
PVW471-8I	.47	.34	30	25	255	1.1	100
PVW561-8I	.56	.40	30	25	230	1.2	100
PVW681-8I	.68	.49	30	25	190	1.3	100
PVW761-8I	.76	.57	30	25	170	1.3	100
PVW821-8I	.82	.59	30	25	150	1.4	100
PVW951-8I	.95	.68	30	25	145	1.4	100
PVW102-6I	1.0	.67	25	7.9	140	1.5	100
PVW152-6I	1.5	1.0	25	7.9	110	1.5	100
PVW222-6I	2.2	1.5	25	7.9	100	2.1	80
PVW272-6I	2.7	1.8	25	7.9	89	2.4	75
PVW332-6I	3.3	2.2	25	7.9	77	3.3	65
PVW472-6I	4.7	3.1	25	7.9	49	3.3	60
PVW582-6I	5.8	3.9	25	7.9	38	4.2	58
PVW682-6I	6.8	4.5	25	7.9	36	4.5	55
PVW822-6I	8.2	5.5	25	7.9	21	4.5	55
PVW103-3F	10	6.0	25	2.5	20	4.5	55
PVW133-3F	13	6.5	25	2.5	19	4.5	53
PVW163-3F	16	8.0	25	2.5	16	5.1	50
PVW203-3F	20	10	25	2.5	14	5.2	43
PVW223-3F	22	11	25	2.5	12	6	43
PVW303-3F	30	15	25	2.5	11	6.7	40
PVW363-3F	36	18	25	2.5	10	7.5	40
PVW473-3F	47	24	25	2.5	6.5	8.5	39
PVW563-3F	56	28	25	2.5	6.3	10.5	35
PVW683-3F	68	34	25	2.5	6.2	12.0	30
PVW753-3F	75	38	25	2.5	5.9	13.5	30
PVW863-3F	86	43	25	2.5	5.6	15.0	28
PVW104-3F	100	50	20	2.5	5.3	18.0	27
PVW124-3F	120	60	20	.79	4.4	21.0	25
PVW154-3F	150	75	20	.79	4.0	27.0	22
PVW474-1F	470	235	20	.79	2.0	45.0	16
PVW684-1F	680	340	20	.79	2.1	52.0	15
PVW105-1F	1000	500	20	.79	1.1	112.0	11