

PLEASE CHECK WWW.MOLEX.COM FOR LATEST PART INFORMATION

Part Number: [44516-0013](#)
Status: **Active**
Overview: [Mini-Fit® BMI](#)
Description: Mini-Fit® BMI Receptacle Housing, 4.20mm Pitch, Dual Row, Panel Mount, Slide-and-Lock, PBT Polyester, UL 94V-0, 36 Circuits

Documents:

3D Model	Product Specification PS-45750-001 (PDF)
Drawing (PDF)	Test Summary TS-5556-002 (PDF)
Product Specification PS-44516-001 (PDF)	RoHS Certificate of Compliance (PDF)

Agency Certification

CSA	LR19980
UL	E29179

General

Product Family	Crimp Housings
Series	44516
Application	Power, Wire-to-Board, Wire-to-Wire
Comments	Current = 13A max. per circuit when header is mated to a receptacle loaded with 45750 series terminals crimped to 16 AWG wire. . See Molex product specification PS-45750-001 for additional current derating information.. Must be used with HCS female terminal.
Overview	Mini-Fit® BMI
Product Name	Mini-Fit® BMI
UPC	800756508962

Physical

Circuits (maximum)	36
Color - Resin	Black
Flammability	94V-0
Gender	Female
Glow-Wire Compliant	No
Lock to Mating Part	None
Material - Resin	Polyester
Net Weight	9.338/g
Number of Rows	2
Packaging Type	Tray
Panel Mount	Yes
Pitch - Mating Interface	4.20mm
Polarized to Mating Part	Yes
Stackable	No
Temperature Range - Operating	-40°C to +105°C

Electrical

Current - Maximum per Contact	13A
-------------------------------	-----

Material Info

Reference - Drawing Numbers

Product Specification	PS-44516-001, PS-45750-001
Sales Drawing	SD-44516-006
Test Summary	TS-5556-002

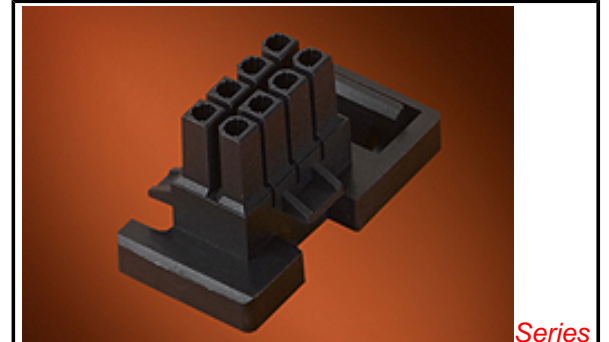


image - Reference only

Series

EU RoHS

ELV and RoHS Compliant
REACH SVHC
Contains SVHC: No
Low-Halogen Status
Not Low-Halogen

China RoHS



Need more information on product environmental compliance?

Email productcompliance@molex.com
 For a multiple part number RoHS Certificate of Compliance, [click here](#)

Please visit the [Contact Us](#) section for any non-product compliance questions.

Search Parts in this Series

[44516Series](#)

Mates With

[43770](#) Mini-Fit® Plug, Mini-Fit® Header
[43759](#) , [45567](#) , [43693](#)

Use With

Mini-Fit® Crimp Terminal [5556](#) , [44476](#) ,
[45750](#) Mini-Fit® Plus HCS Crimp Terminal

This document was generated on 03/27/2014

PLEASE CHECK WWW.MOLEX.COM FOR LATEST PART INFORMATION