

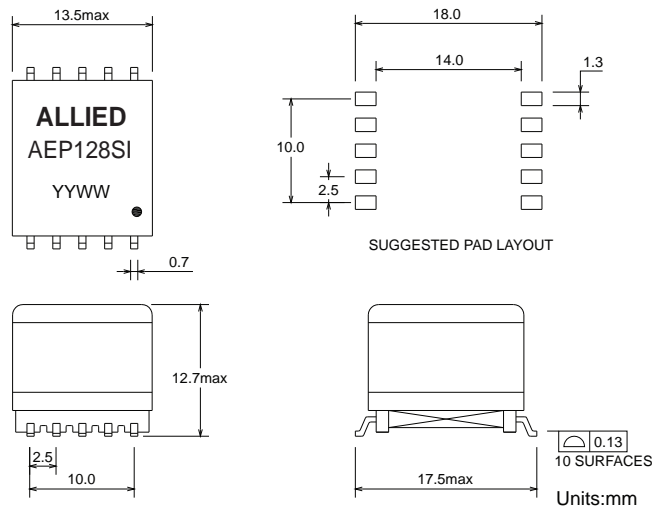
# ADSL LINE TRANSFORMER SURFACE MOUNT MAGNETICS

- EN60950 Basic Insulation compliant 250Vrms
- SMD compact foot print design
- Industrial operating temp: -40°C to +85°C

| Electrical Specifications @25°C |                          |                  |                          |                               |                     |
|---------------------------------|--------------------------|------------------|--------------------------|-------------------------------|---------------------|
| Part Number                     | Turns Ratio (10KHz,0.1V) | OCL (10KHz,0.1V) | LL (100KHz,0.1V)         | C <sub>ww</sub> (100KHz,0.1V) |                     |
| AEP128SI                        | 10-7:1-4:(short8-9,2-3)  | 10-7(short 8-9)  | 10-7( short 8-9,1-2-3-4) | 1-10( short 2-3, 8-9)         |                     |
|                                 | 0.794:1±2%               | 470uH±5%         | 14uH max                 | 40pF max                      |                     |
|                                 | Continue                 |                  |                          |                               |                     |
|                                 | DCR                      |                  | THD                      | LB                            | Hi-Pot VAC (1mA/2S) |
|                                 | 10-7(short 8-9)          | 1-4(short 2-3)   | 10KHz,2V                 | 1.1MHz                        | (1mA/2S)            |
|                                 | 1.15Ω±10%                | 1.6Ω±10%         | -70dB max                | 55dB min                      | 1500                |

All specifications subject to change without notice.

## MECHANICAL



Unless otherwise specified all tolerances are: ±0.25 in mm

## SCHEMATICS

